

APPENDIX III

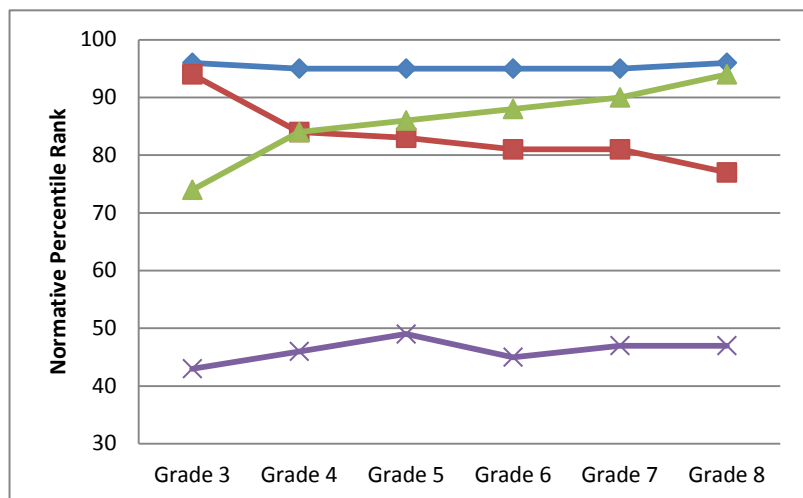
Supplementary Figures

In the main findings section of *Do High Flyers Maintain Their Altitude? Performance Trends of Top Students*, when we presented data in a figure, we typically only included data depicting math performance of elementary/middle school students. In this appendix, we include the original figure depicting elementary/middle math data, along with the correlating figures for elementary/middle school reading, middle/high school math, and middle/high school reading.

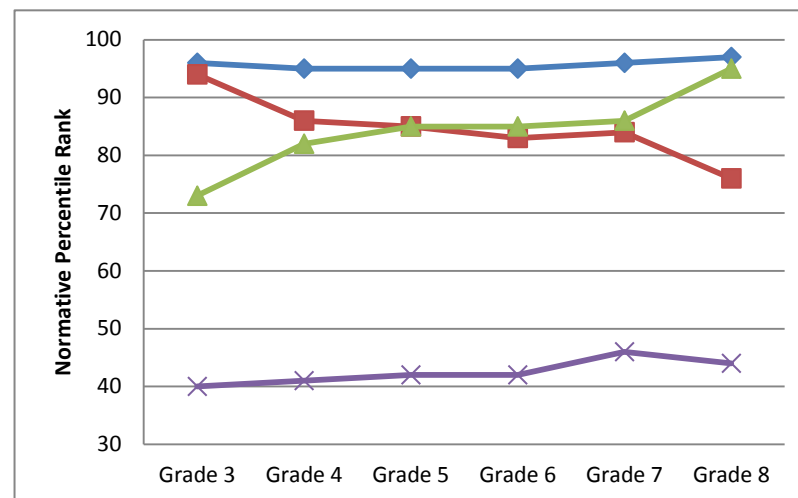


Figure 2. Migration Patterns by High-Flyer Status

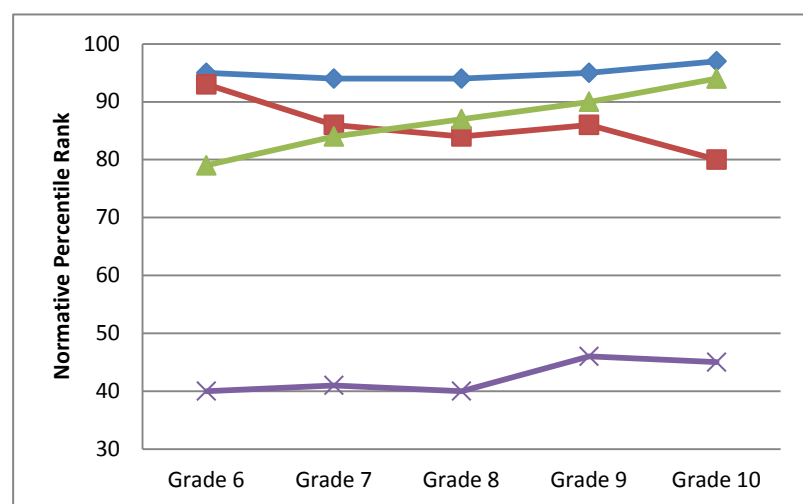
2a. Elementary/Middle School Math



2b. Elementary/Middle School Reading



2c. Middle/High School Math



2d. Middle/High School Reading

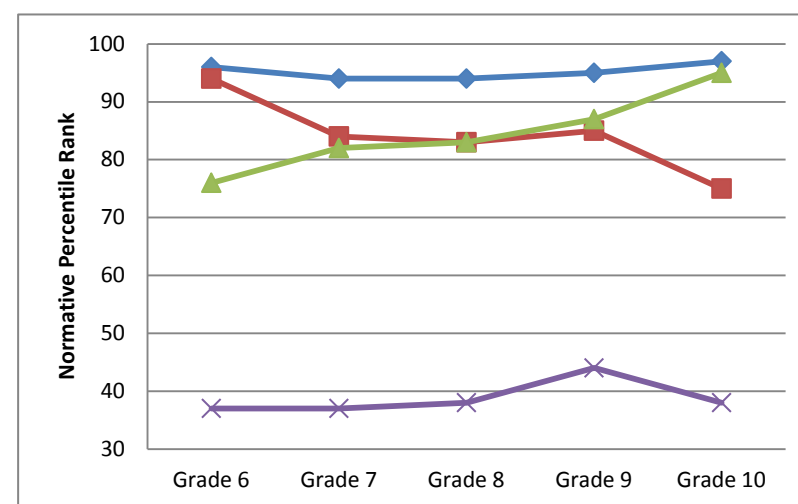
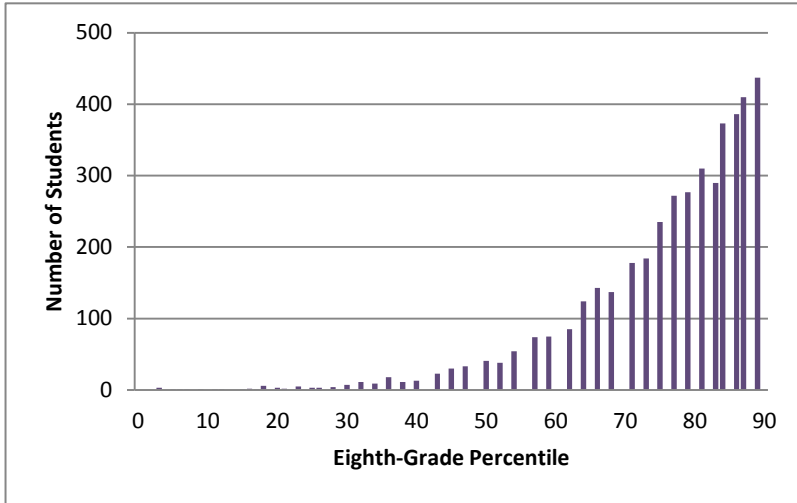
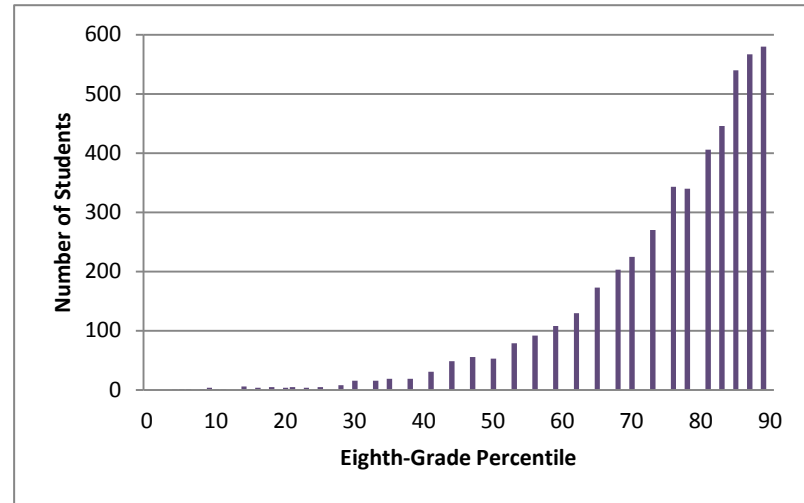


Figure 3. Performance of Defenders

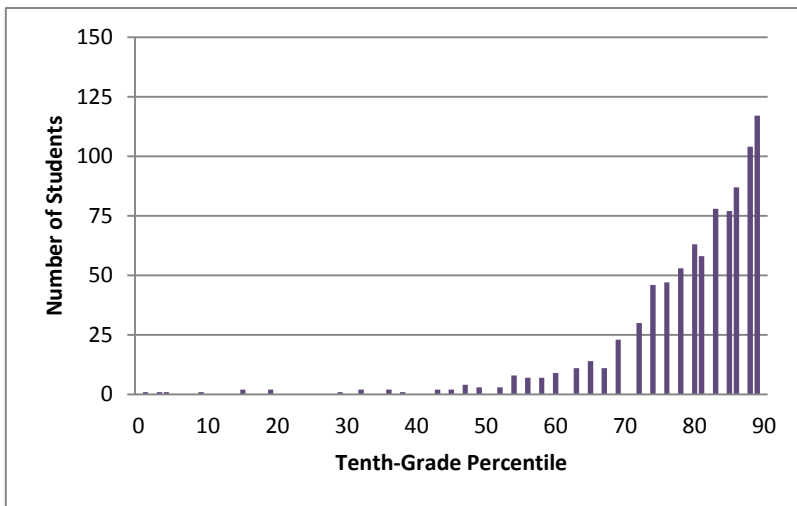
3a. Elem./Middle Math, Eighth-Grade Performance of Defenders



3b. Elem./Middle Reading, Eighth-Grade Performance of Defenders



3c. Middle/High Math, Tenth-Grade Performance of Defenders



3d. Middle/High Reading, Tenth-Grade Performance of Defenders

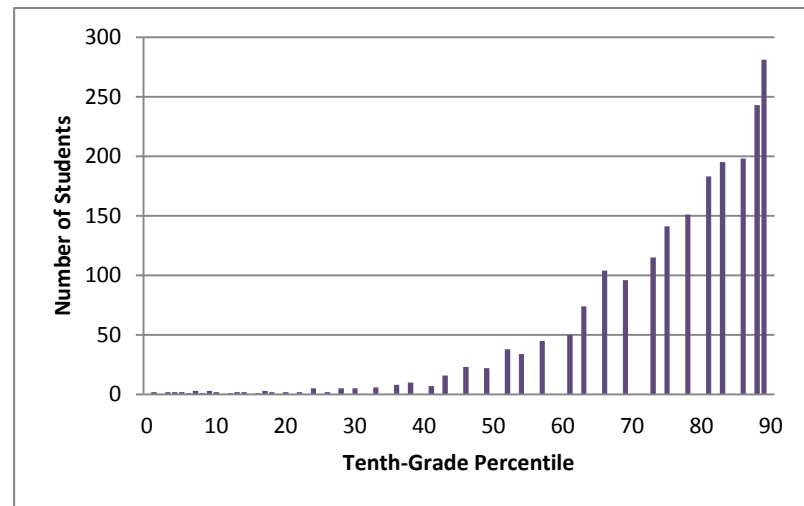
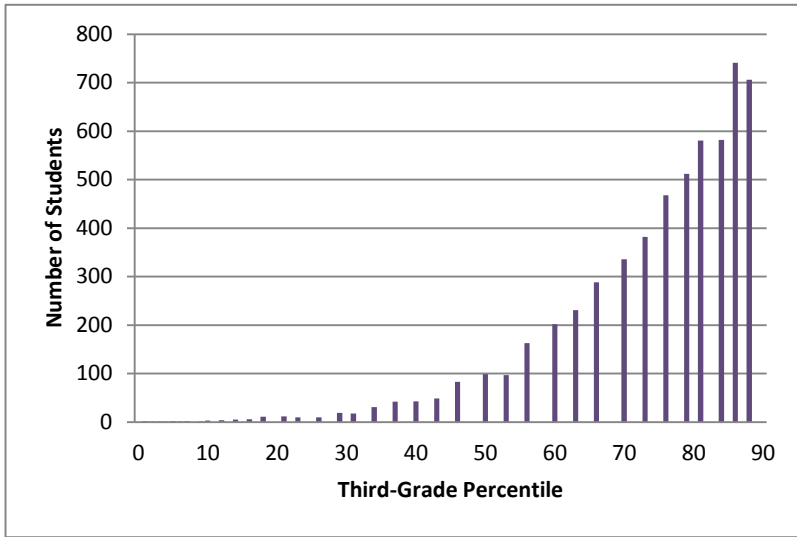
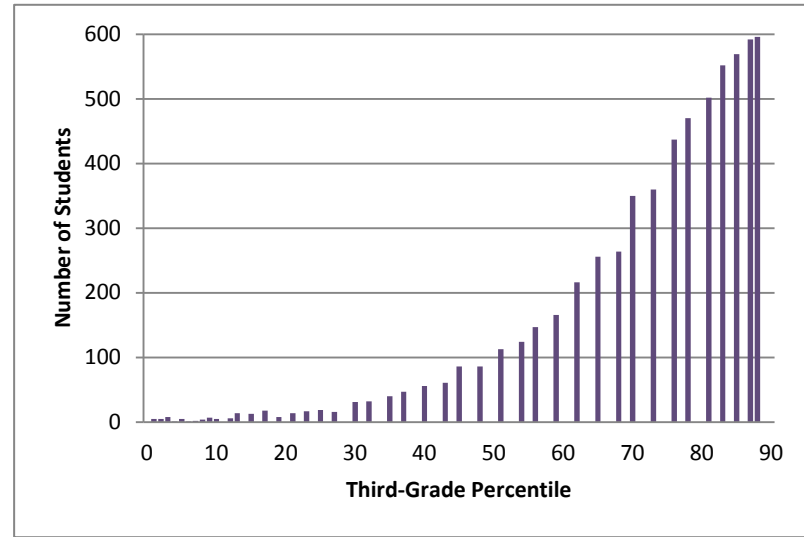


Figure 4. Performance of Late Bloomers

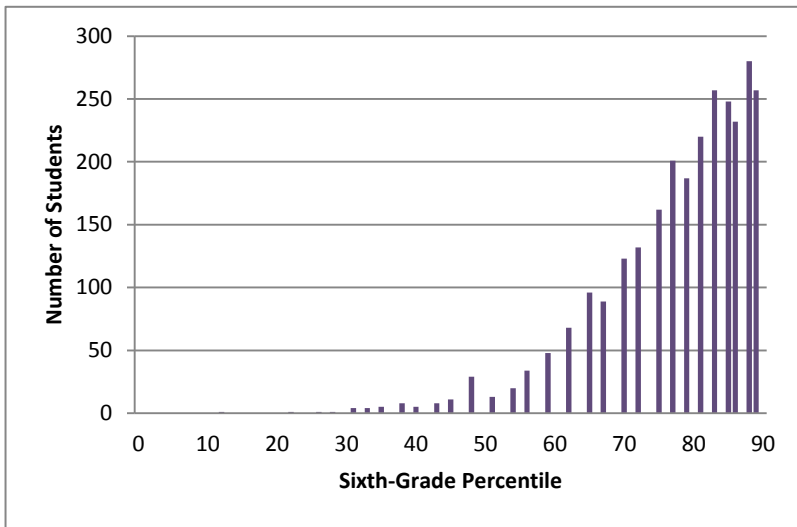
4a. Elem./Middle Math, Third-Grade Performance of Late Bloomers



4b. Elem./Middle Reading, Third-Grade Performance of Late Bloomers



4c. Middle/High Math, Sixth-Grade Performance of Late Bloomers



4d. Middle/High Reading, Sixth-Grade Performance of Late Bloomers

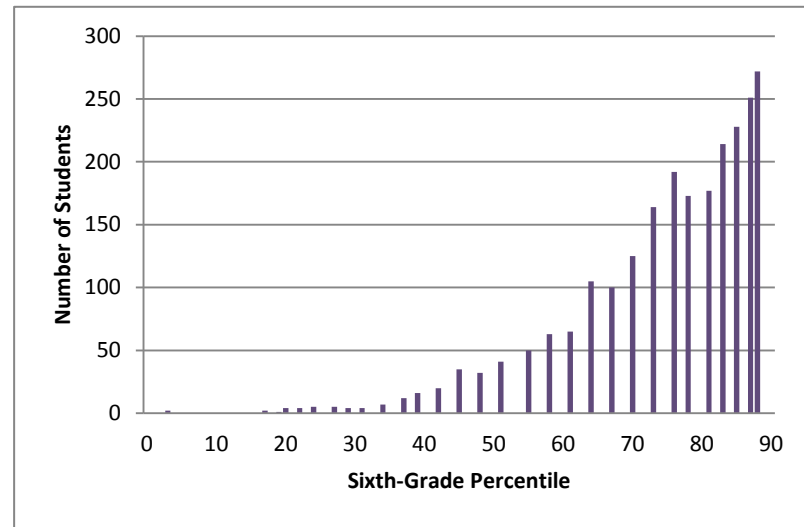
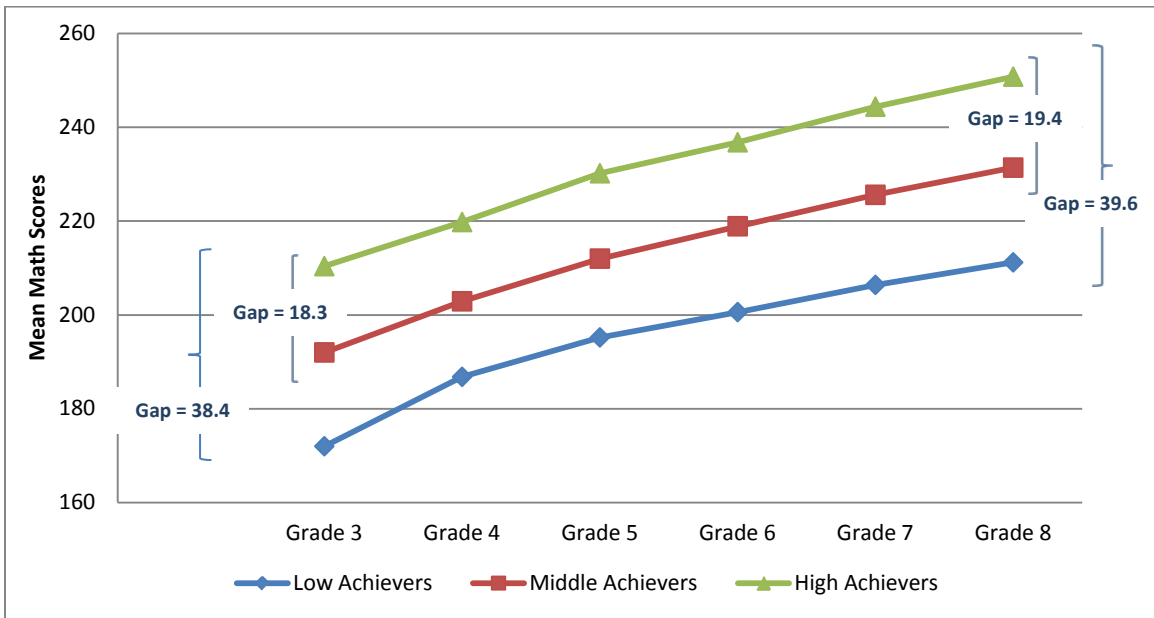


Figure 5. Academic Growth of Low, Middle, and High Achievers (Math)

5a. Elementary/Middle School



5b. Middle/High School

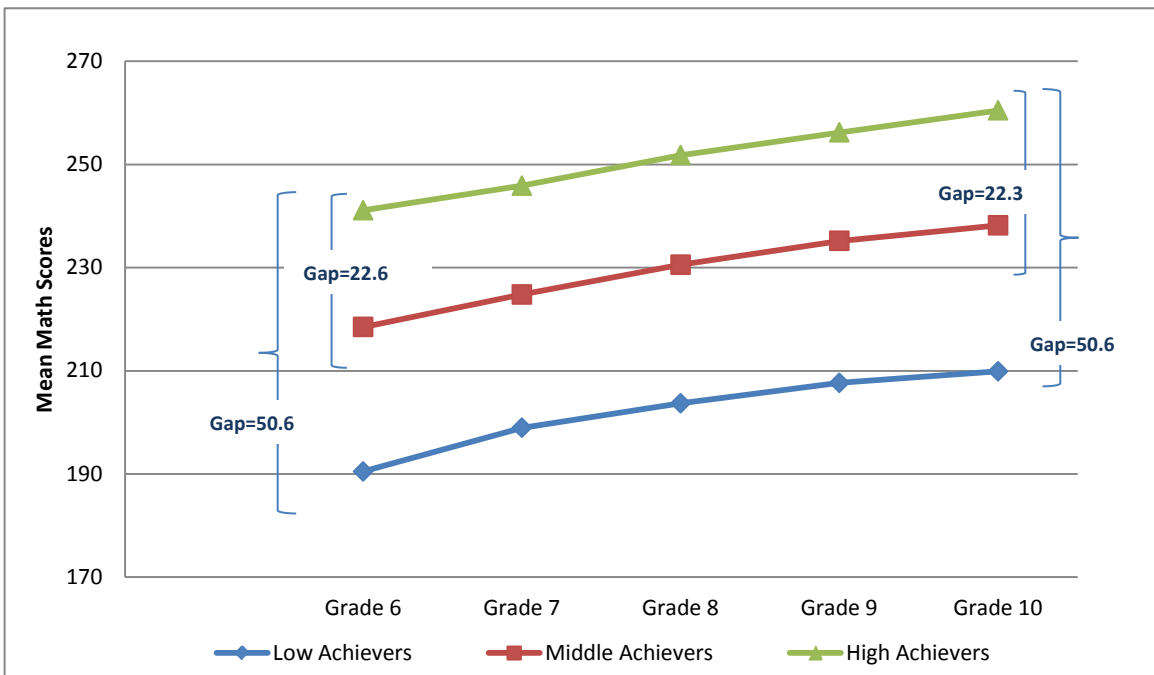
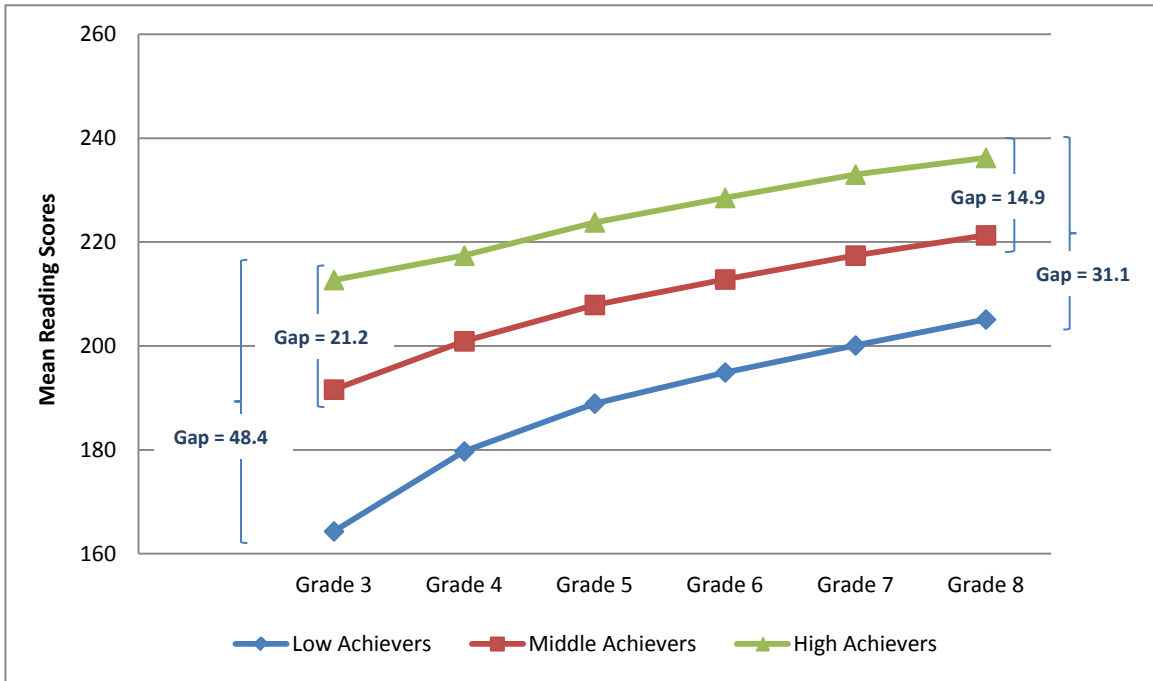


Figure 6. Academic Growth of High, Middle, and Low Achievers (Reading)

6a. Elementary/Middle School



6b. Middle/High School

