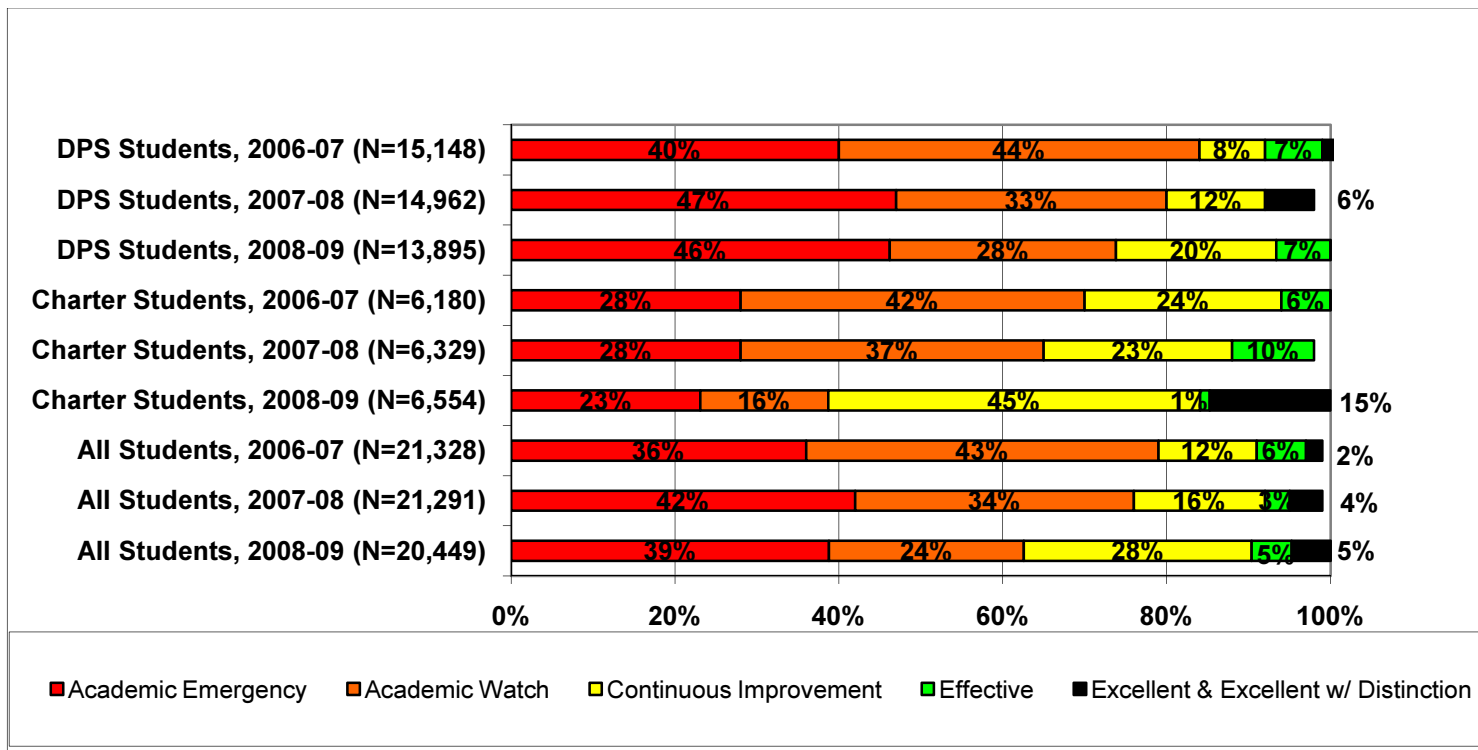


Detailed Analysis of School Performance in Dayton (2008-09)

**Graph I: Percent of Dayton Students in Public Schools by State Designation
(2006-07, 2007-08, and 2008-09)**



Source: Ohio Department of Education interactive Local Report Card

Note: This chart does not include students in schools that are unrated and students attending charter e-schools.

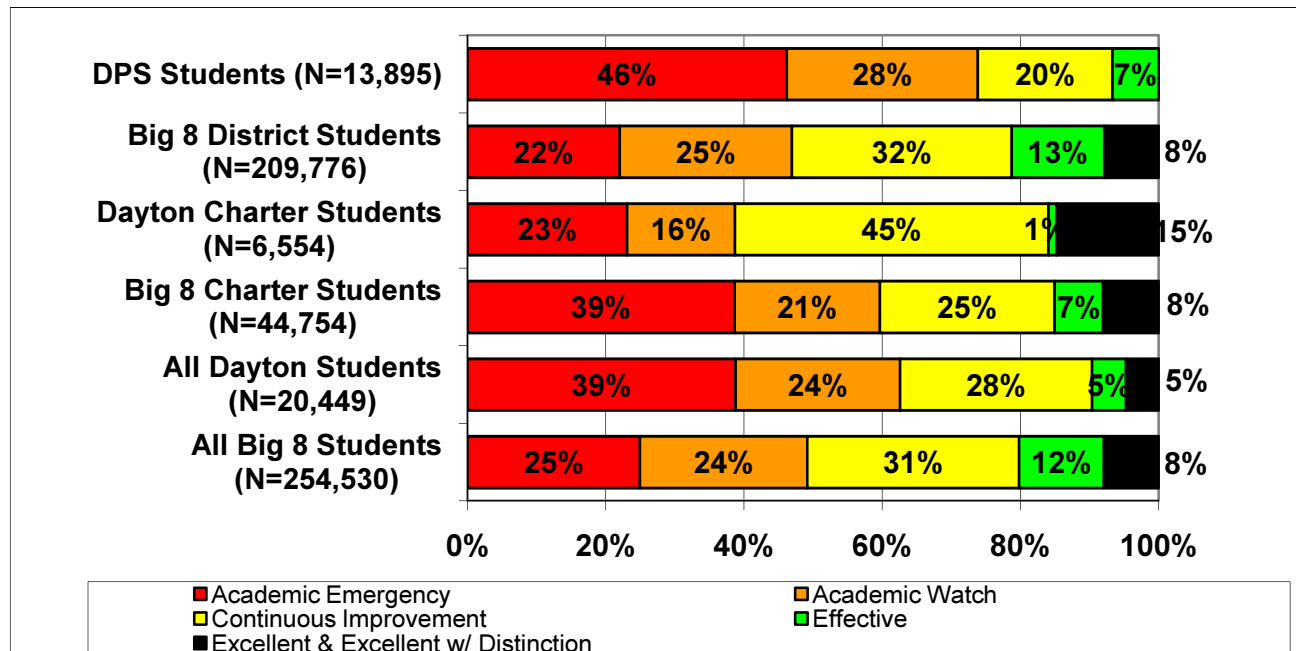
Totals may not equal 100 due to rounding.

Percent of Dayton Students in Public Schools (District and Charter) by State Designation.

Graph I shows the percent of Dayton students in district and charter schools by state designation for the 2006-07, 2007-08, and 2008-09 school years.

In 2007-08, just 23 percent of Dayton students in public schools (district and charter) were attending schools the state rated “A,” “B,” or “C.” In 2008-09, 38 percent of students attended such schools. More Dayton charter school students are attending highly rated schools than before. In 2008-09, 16 percent of Dayton charter students were in a school rated Excellent (including Excellent w/ Distinction) or Effective, up from 10 percent in 2007-08 and six percent in 2006-07. This is also in contrast with the 7 percent of Dayton Public School District students attending such a school.

Graph II: Percent of Dayton Students in Public Schools by State Designation versus the Big 8 Average*



Source: Ohio Department of Education interactive Local Report Card

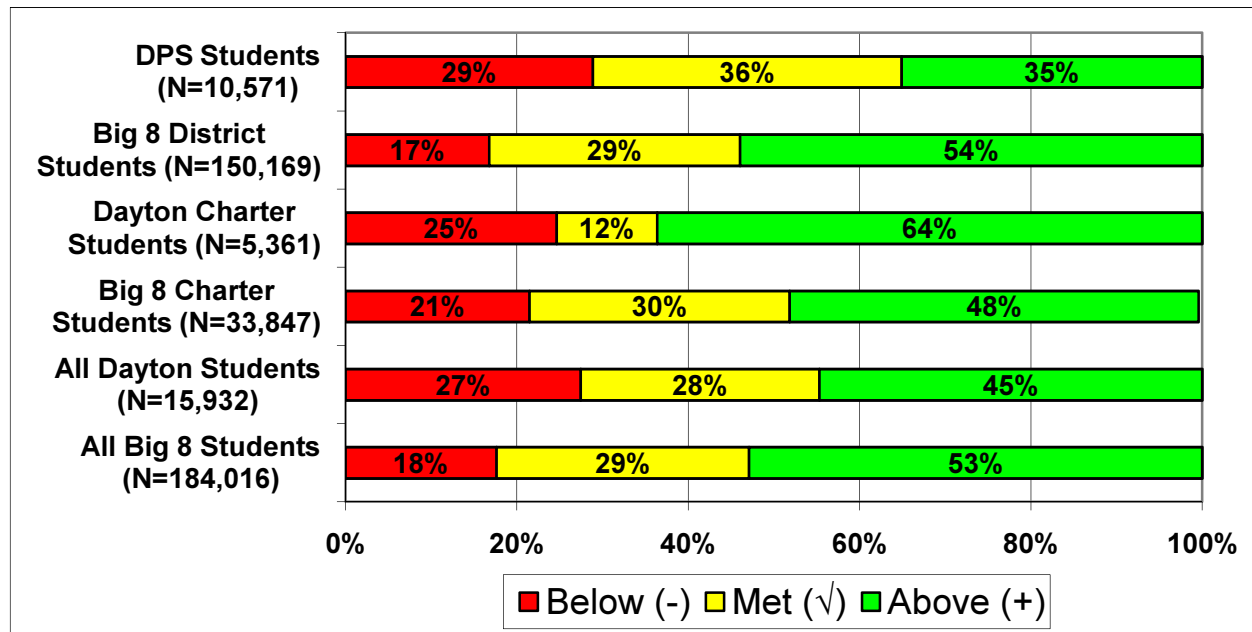
Note: This chart does not include students in schools that are unrated and students attending charter e-schools.

Percent of Dayton Students in Public Schools by State Designation versus the Big 8 Average. Graph II shows how Dayton district and charter school students performed against the Big 8 averages for district and charter performance. This helps to put the performance of students in Dayton into a larger context (e.g., how do they perform against other urban students in Ohio?)

Dayton Public School District students are more likely than their Big 8 district peers to attend a school rated “D” or “F” by the state. Three-quarters (74 percent) of Dayton Public School District students are in a school rated Academic Emergency or Academic Watch by the state, versus 47 percent of students in Big 8 district schools. Meanwhile, Dayton charter school students are less likely than their Big 8 peers to attend a failing school – 39 percent of Dayton charter school students attend a school rated “D” or “F” by the state compared with 60 percent of students in Big 8 charter schools. Dayton charter school students were more likely to attend an Excellent school (15 percent) than their Dayton Public School peers or any other Big 8 students- district or charter.

* The Big 8 districts are defined as Ohio’s largest urban districts: Akron, Canton, Cincinnati, Cleveland, Columbus, Dayton, Toledo, and Youngstown.

Graph III: Percent of Dayton Students in Public Schools by Value-added Composite Score versus the Big 8 Average (2008-09)



Source: Ohio Department of Education interactive Local Report Card

Note: This chart does not include students in schools that did not receive a value-added composite score or students attending charter e-schools.

Percent of Dayton Students in Public Schools by Value-added Composite Score versus the Big 8

Average. Ohio's local report cards include each school's "value-added"—how much progress students in grades four through eight made in reading and math over the course of one year compared to how much the state expected them to gain (for a detailed explanation go to:

http://www.edexcellence.net/detail/news.cfm?news_id=735&id=130). Using this information Ohio determines if each school made "Above Expected Growth," "Expected Growth," or "Below Expected Growth."

In Dayton 27 percent of all students in public schools (charter and district) attended a school that failed to make one year's worth of expected academic growth. This is an improvement over last year, when 54 percent of Dayton students attended such a school but it is significantly higher than the Big 8 average of just 18 percent. Dayton charter students were more likely than their district peers to attend a school that saw better than expected growth. While 64 percent of Dayton charter students attended a school that exceeded the state's growth targets, just 35 percent of Dayton Public School District students attended a school rated as such. Dayton charter students were also more likely than their Big 8 charter peers to attend a school with above expected growth.

Table I: Dayton Public Schools (District and Charter) Ranked by Performance Index Score

The following pages list Dayton's public charter and district schools ranked by Performance Index (PI) score[†] for the 2008-09 school year. Numerous other performance indicators are also included, but the Performance Index score was selected for ranking the schools because it provides an overall indication of how well students perform on all tested subjects in grades 3 through 8 and the Ohio Graduation Test.

We strongly encourage readers to look closely at the number of standards met and the number of standards possible. A school with a large number of possible standards and possible standards met has gotten a large percentage of students to the state proficiency goals.

We also encourage readers to consider schools' value-added results. Where the Performance Index reflects student achievement at one point in time, value-added tells us how a school is doing at helping its students make progress from year to year. For more on value-added, see Fordham's value-added primer on our website:

http://www.edexcellence.net/detail/news.cfm?news_id=735&id=130.

[†] The Performance Index score is calculated by multiplying the percentage of students that are untested, below basic/limited, basic, proficient, accelerated, or advanced by weights ranging from 0 for untested to 1.2 for advanced students. The totals are then summed up to obtain the school or district's PI score. PI scores range from 0 to 120, and the state has set the goal for all schools to achieve a PI score of 100 or better. For a complete description of how the Ohio Department of Education calculates the PI score see their website here: <http://www.ode.state.oh.us/GD/DocumentManagement/DocumentDownload.aspx?DocumentID=29878>.

Table I: Dayton Public Schools (District and Charter) Ranked by Performance Index Score

Rank	Building Name	Type	PI Score 08-09	PI Score 07-08	Designation 08-09	Overall AYP 08-09	# of standards met 08-09	# of standards possible 08-09	Value-added Composite 08-09	Enrollment	Grade Span
1	Dayton Early College Academy, Inc	Charter	100.5	103.3	Excellent	Met	13	15	Met	280	7-12
2	The ISUS Institute of Manufacturing	Charter	98.8	93.4	Effective	Met	2	7	--	37	9-12, UNG
3	Stivers School For The Arts High School	District	93.4	97.4	Effective	Not Met	15	19	Below	923	7-12
4	The ISUS Institute of Health Care	Charter	93	78.2	Effective	Not Met	2	7	--	40	9-12, UNG
5	Pathway School of Discovery	Charter	92.6	89.7	Excellent	Not Met	10	19	Above	687	K-8
6	Richard Allen Academy II	Charter	89.3	83.1	Cont. Improvement	Met	12	19	Above	509	K-8
7	Charity Adams Earley Academy for Girls	District	88.4	89.5	Cont. Improvement	Met	5	10	Met	284	K-4
8	Mound Street Military Careers Academy	Charter	87.3	71.2	Cont. Improvement	Not Met	0	7	--	65	9-12, UNG
9	Horace Mann PreK-7 School	District	86.9	82.7	Cont. Improvement	Not Met	5	15	Above	340	K-6,P
10	John H Patterson Career Center High School	District	85.2	76	Cont. Improvement	Met	6	12	--	342	9-12
11	Dayton Boys Preparatory Academy	District	83.7	85	Cont. Improvement	Met	4	10	Above	183	K-4,P
12	Richard Allen Academy	Charter	82.4	78.8	Cont. Improvement	Met	6	19	Above	202	1-8
13	Emerson Academy	Charter	81.9	84.3	Cont. Improvement	Not Met	4	19	Below	525	K-8
14	Horizon Science Academy-Dayton	Charter	81.8	89.5	Cont. Improvement	Met	10	22	Below	183	K-12
15	The ISUS Institute of Construction Technology	Charter	81.1	71	Cont. Improvement	Not Met	3	12	--	142	9-12, UNG
16	Trotwood Fitness & Prep Acad	Charter	80.8	75.6	Cont. Improvement	Not Met	2	19	Above	292	K-8
17	Mound Street Health Careers Academy	Charter	80.2	66.2	Cont. Improvement	Met	2	12	--	126	9-12, UNG
18	Valerie PreK-8 School	District	80.1	79.9	Cont. Improvement	Not Met	3	19	Above	449	P,K-8
19	Longfellow Learning Academy	District	79.7	49.3	Not Rated	Not Met	0	2	--	305	D,H,P,K,1-12
20	Thurgood Marshall High School	District	79	64.9	Cont. Improvement	Met	1	12	--	572	9-12
21	Dayton View Academy	Charter	77.8	72.4	Cont. Improvement	Met	4	19	Above	631	K-8
22	Miami Valley Academies	Charter	76.4	73.1	Academic Watch	Not Met	5	26	Above	176	K-12
23	Gorman School	District	76	113.5	Not Rated	Not Met	0	1	--	29	H,P,K,1-8,SN
24	Dunbar High School	District	75.8	67.3	Cont. Improvement	Not Met	0	12	--	564	9-12
25	Ruskin PreK-8 School	District	74.1	0	Academic Watch	Not Met	1	19	Above	374	P,K-8
26	Franklin Montessori PreK-7 School	District	74	76.6	Academic Emergency	Not Met	0	15	Below	400	K-6
27	Cleveland PreK-8 School	District	73.3	70.9	Academic Watch	Not Met	1	19	Above	452	P,K-8
28	Eastmont Park PreK-8 School	District	72.2	78.7	Academic Watch	Not Met	0	19	Met	485	P,K-8
*29	Mound Street IT Careers Academy	Charter	71.8	65.5	Cont. Improvement	Not Met	1	12	--	101	9-12, UNG
*29	World of Wonder PreK-8 School	District	71.8	72.3	Academic Watch	Not Met	2	19	Met	471	P,K-8
31	Dayton Academy, The	Charter	71.5	73.2	Academic Watch	Not Met	1	19	Above	706	K-8
32	City Day Community School	Charter	71.4	64.3	Cont. Improvement	Met	3	19	Above	159	K-8
33	Summit Academy Transition High School Dayton	Charter	71.1	45.2	Cont. Improvement	Met	1	6	--	38	8-12, UNG
*34	Belmont High School	District	70	72.8	Academic Watch	Not Met	1	12	--	907	9-12
*34	Charles L Loos Elementary School	District	70	71.7	Academic Watch	Not Met	0	12	Met	285	K-6,P
*34	Kiser PreK-8 School	District	70	69.6	Academic Watch	Not Met	0	19	Met	467	P,K-8
37	Belle Haven PreK-8 School	District	69	72.1	Academic Emergency	Not Met	1	19	Below	444	P,K-8
38	Kemp PreK-8 School	District	68.5	68.8	Academic Watch	Not Met	0	19	Above	395	P,K-8
39	Meadowdale High School	District	68.3	70.1	Academic Emergency	Not Met	0	12	--	939	9-12

Detailed Analysis of Public School Performance in Dayton, 2008-09

Thomas B. Fordham Institute, August 25, 2009

40	Onville Wright Elementary School	District	67.5	67.9	Academic Emergency	Not Met	0	12	Above	347	K-6,P
41	North Dayton School Of Science & Discovery	Charter	67.1	74.6	Academic Emergency	Not Met	1	19	Below	613	K-8
42	Meadowdale PreK-8 School	District	66.5	63.8	Academic Emergency	Not Met	1	19	Above	448	P,K-8
43	Louise Troy PreK-8 School	District	65.6	71.9	Academic Emergency	Not Met	0	15	Below	416	P,K-8
44	Edison PreK-7 School @ Fairview	District	64	64.2	Academic Emergency	Not Met	1	19	Above	358	P,K-1-7
45	Patterson/Kennedy PreK-8 School	District	63.8	69.4	Academic Emergency	Not Met	0	19	Met	645	P,K-8
46	Wogaman PreK-8 School	District	62.2	64.8	Academic Emergency	Not Met	1	19	Below	431	P,K-8
47	Fairview Elementary School	District	61.3	59.8	Academic Emergency	Not Met	1	12	Above	362	K-6,P
48	E. J. Brown PreK-8 School	District	59.1	55.9	Academic Emergency	Not Met	0	19	Met	359	P,K-8
49	Dayton Technology Design High School	Charter	58.8	62.3	Academic Watch	Not Met	4	12	--	142	10-12
50	Academy Of Dayton	Charter	58.3	50.9	Academic Emergency	Not Met	0	11	Met	124	K-1-8,SN
51	Rosa Parks PreK-8 School	District	57.5	61	Academic Emergency	Not Met	0	19	Met	427	P,K-8
52	Westwood PreK-8 School	District	57.3	63.7	Academic Emergency	Not Met	0	19	Met	408	P,K-8
53	Tech Con Institute	Charter	55.4	26.7	Academic Emergency	Not Met	0	12	--	84	9-12
54	Gardendale Academy	District	55.3	59.4	Not Rated	Not Met	0	1	--	58	K-1-12,SN
55	New City School	Charter	55.2	116.7	Academic Emergency	Not Met	3	17	--	113	K-12
56	Life Skills Center of Dayton	Charter	55	57.9	Not Rated	Not Met	0	2	--	408	9-12
57	Wilbur Wright Middle School	District	54.8	62.5	Academic Emergency	Not Met	0	8	Below	438	7-8
58	Summit Academy Dayton	Charter	50.9	50.1	Not Rated	Not Met	1	1	Above	48	K-1-12,UNG
59	New Choices Community School	Charter	44.3	67	Academic Emergency	Not Met	2	15	Met	226	7-12
60	Nu Bethel Center of Excellence	Charter	41.4	40	Not Rated	Not Met	0	1	--	51	K-8
61	Arise Academy	Charter	34	34.3	Academic Emergency	Not Met	0	12	--	353	K-12
62	General Chappie James Leadership Academy	Charter	16.3	37.7	Not Rated	Met	0	2	--	83	9-12

Source: *Ohio Department of Education*

Notes: 1) Rankings are based on Performance Index score for the 2008-09 school year. 2) Schools without a Performance Index score were removed.

* These schools were tied for the same ranking number.