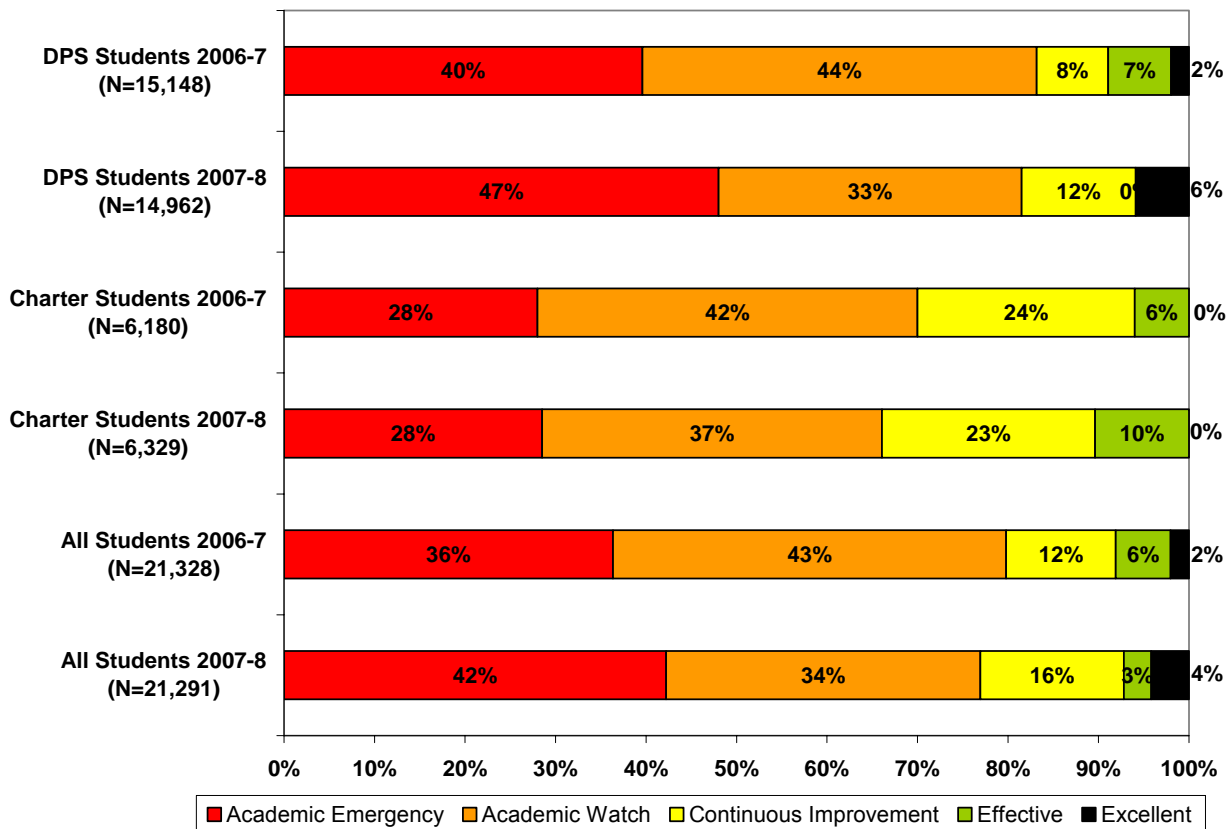


Detailed Analysis of School Performance in Dayton (2007-08)

*Graph I: Percent of Dayton Students in Public Schools by State Designation
(2006-07 & 2007-08)*



Source: Ohio Department of Education interactive Local Report Card

Note: This chart does not include students in schools that are unrated and students attending charter e-schools.

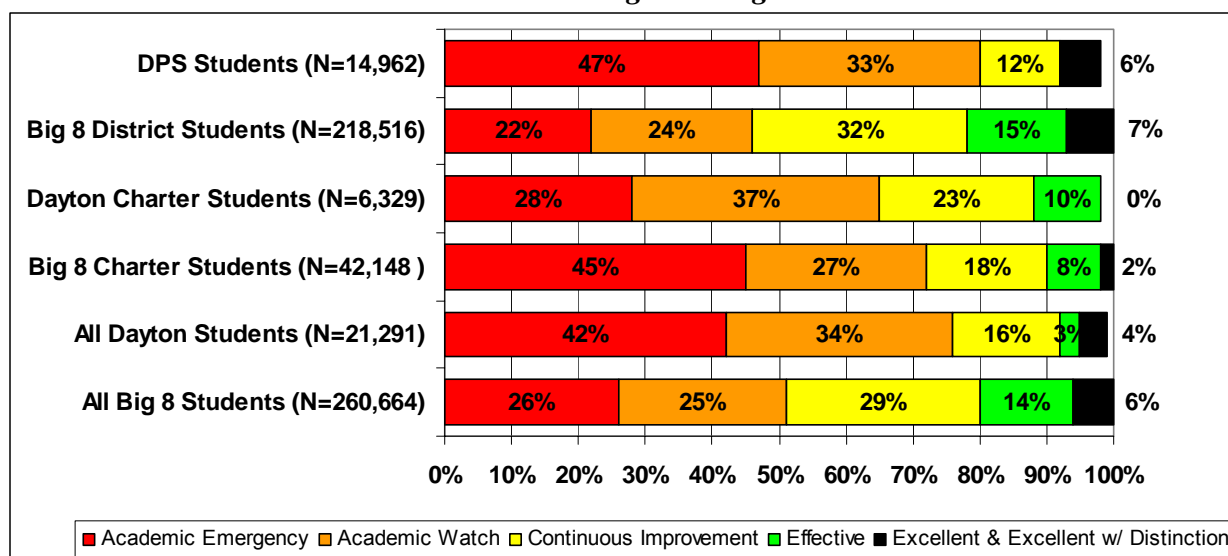
Percent of Dayton Students in Public Schools (District and Charter) by State Designation.

Graph I shows the percent of Dayton students in district and charter schools by state designation for both the 2006-07 and 2007-08 school years. In 2007-08, 42 percent of students (district and charter) were attending schools the state rated academic emergency while 34 percent were attending schools graded academic watch (for a total of 76 percent of students in “D” or “F” schools). In contrast, in 2006-07, 36 percent of students (district and charter) were attending schools the state rated academic emergency while 43 percent were attending schools graded academic watch (for a total of 79 percent of students in “D” or “F” schools).

For Dayton district schools alone in 2007-08, 47 percent of students attended a school rated academic emergency, while 28 percent of charter students were in schools rated academic emergency in 2007-08. In 2006-07, students in both sectors fared little better with 40 percent of

district students attending a school rated academic emergency and 28 percent of charter students in “F” rated schools.

Graph II: Percent of Dayton Students in Public Schools by State Designation versus the Big 8 Average*

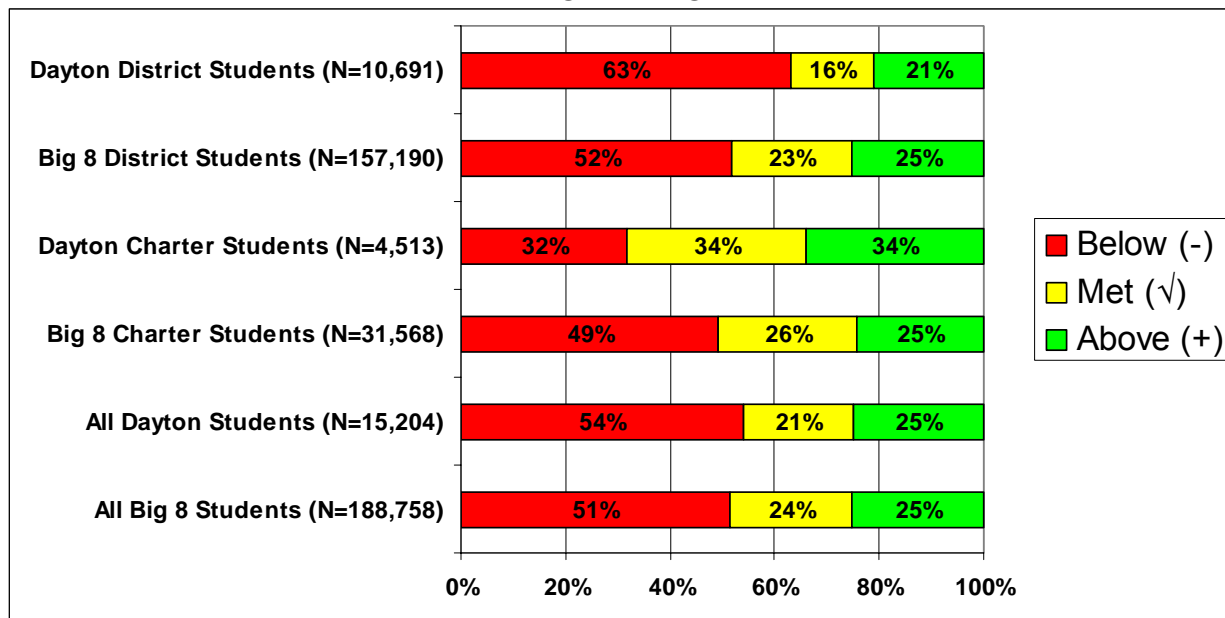


Percent of Dayton Students in Public Schools by State Designation versus the Big 8 Average.

Graph II shows how Dayton district and charter school students performed against the Big 8 averages for district and charter performance. This helps to put the performance of students in Dayton into a larger context (e.g., how do they perform against other urban students in Ohio?) Dayton students overall perform less well than their Big 8 peers (76 percent of Dayton students are in a school rated academic emergency or academic watch while the Big 8 average is 51 percent). It is encouraging to note that Dayton charter school students outperform their peers in charters across the Big 8 by a significant margin.

* The Big 8 districts are defined as Ohio’s largest urban districts: Akron, Canton, Cincinnati, Cleveland, Columbus, Dayton, Toledo, and Youngstown.

Graph III: Percent of Dayton Students in Public Schools by Value-added Composite Score versus the Big 8 Average (2007-08)



Percent of Dayton Students in Public Schools by Value-added Composite Score versus the Big 8 Average. For the first time in 2007-08, Ohio’s local report cards include each school’s “value-added”—how much progress students made in reading and math over the course of one year compared to how much the state expected them to gain (for a detailed explanation go to: http://www.edexcellence.net/detail/news.cfm?news_id=735&id=130). Using this information Ohio determined if each school made “Above Expected Growth,” “Expected Growth,” or “Below Expected Growth.”

In Dayton, 54 percent of all students in public schools (district and charter) made less than a year’s worth of expected growth in 2007-08. This contrasts with the Big 8 urban district average where 51 percent of all students made less than a year’s worth of expected growth in 2007-08. Charter students in Dayton made more growth than their district peers with 68 percent of charter students meeting or exceeding growth targets. In contrast, only 37 percent of Dayton Public School students met or exceeded the state’s growth targets. What this means in practice is that a significantly larger percentage of students in Dayton’s charters learned more in 2007-08 than did their peers in district schools. The same holds for the Big 8 charters, where charter students showed more gains in 2007-08 (51 percent were at or above expected growth) than Big 8 district students (only 48 percent were at or above expected growth).

Table I: Dayton Public Schools (District and Charter) Ranked by Performance Index Score

The following pages list Dayton's public charter and district schools ranked by Performance Index (PI) score[†] for the 2007-08 school year. Numerous other performance indicators are also included, but the Performance Index score was selected for ranking the schools because it provides an overall indication of how well students perform on all tested subjects in grades 3 through 8 and the Ohio Graduation Test.

We strongly encourage readers to look closely at the number of standards met and the number of standards possible. A school with a large number of possible standards and possible standards met has gotten a large percentage of students to the state proficiency goals.

We also encourage readers to consider schools' value-added results. Where the Performance Index reflects student achievement at one point in time, value-added tells us how a school is doing at helping its students make progress from year to year. For more on value-added, see Fordham's value-added primer on our website:

http://www.edexcellence.net/detail/news.cfm?news_id=735&id=130.

[†] The Performance Index score is calculated by multiplying the percentage of students that are untested, below basic/limited, basic, proficient, accelerated, or advanced by weights ranging from 0 for untested to 1.2 for advanced students. The totals are then summed up to obtain the school or district's PI score. PI scores range from 0 to 120, and the state has set the goal for all schools to achieve a PI score of 100 or better. For a complete description of how the Ohio Department of Education calculates the PI score see their website here: <http://www.ode.state.oh.us/GD/DocumentManagement/DocumentDownload.aspx?DocumentID=29878>.

Table I: Dayton Public Schools (District and Charter) Ranked by Performance Index Score

Rank	Building Name	Type	PI Score 07-08	PI Score 06-07	Designation 07-08	Overall AYP 07-08	# of standards met 07-08	# of standards possible 07-08	Value-added Composite 07-08	Enrollment	Grade Span
1	Stivers School For The Arts High School	DPS Choice	97.4	95.1	Excellent	Met	16	19	Above	865	7-12
2	The ISUS Institute of Manufacturing	Charter	93.4	52.3	Effective	Not Met	0	6	--	68	9-12,UNG
3	Pathway School of Discovery	Charter	89.7	85.6	Effective	Not Met	10	19	Above	578	K-8
*4	Horizon Science Academy-Dayton	Charter	89.5	74.7	Continuous Improvement	Met	9	15	Above	174	K-12
*4	Charity Adams Earley Academy for Girls	DPS Choice	89.5	104.1	Continuous Improvement	Not Met	2	6	Below	207	K-4
6	Dayton Boys Preparatory Academy	DPS Choice	85	98.9	Continuous Improvement	Met	1	6	Below	149	K-4,P
7	Emerson Academy	Charter	84.3	84.9	Continuous Improvement	Met	5	19	Met	373	K-8
8	Richard Allen Academy II	Charter	83.1	92.3	Continuous Improvement	Met	6	19	Below	366	K-8
9	Horace Mann Montessori Elementary School	DPS Choice	82.7	88.3	Continuous Improvement	Not Met	3	12	Below	260	K-6,P
10	East End Community School	Charter	80.8	75.3	Continuous Improvement	Met	2	15	Met	210	K-7
11	Valerie Elementary School	District	79.9	84.8	Continuous Improvement	Met	4	19	Below	419	P,K-8
12	Richard Allen Academy	Charter	78.8	87.2	Continuous Improvement	Met	5	19	Below	211	1-8
13	Eastmont Park Elementary School	District	78.7	83.8	Academic Watch	Not Met	4	19	Below	517	P,K-8
*14	Richard Allen Preparatory	Charter	78.2	79.3	Continuous Improvement	Met	2	7	Below	49	K-12
*14	The ISUS Institute of Health Care	Charter	78.2	62.8	Academic Watch	Not Met	1	12	--	67	9-12,UNG
16	Franklin Montessori Elementary School	DPS Choice	76.6	78.2	Academic Watch	Not Met	2	12	Below	382	K-6
17	John H Patterson Career Center High School	DPS Choice	76	76.8	Academic Watch	Not Met	3	12	--	412	9-12
18	North Dayton School Of Science & Discovery	Charter	74.6	74.7	Academic Watch	Not Met	2	19	Above	594	K-8
19	Dayton Academy, The	Charter	73.2	75.8	Academic Watch	Not Met	1	19	Below	633	K-8
20	Miami Valley Academies	Charter	73.1	69.1	Academic Watch	Not Met	0	19	Below	174	K-12
21	Belmont High School	District	72.8	72.9	Academic Watch	Not Met	0	12	--	973	9-12
22	Dayton View Academy	Charter	72.4	70.5	Academic Watch	Not Met	1	19	Met	599	K-8
23	World of Wonder Elementary School	DPS Choice	72.3	76.6	Academic Watch	Not Met	2	19	Below	443	P,K-8
24	Belle Haven Elementary School	District	72.1	68.5	Continuous Improvement	Not Met	2	19	Above	440	P,K-8
25	F G Carlson Elementary School	District	71.9	73.4	Academic Watch	Not Met	1	12	Below	385	K-6,P
26	Charles L Loos Elementary School	District	71.7	71.7	Continuous Improvement	Not Met	0	12	Above	386	K-6,P
27	Mound Street Military Careers Academy	Charter	71.2	65.8	Academic Watch	Not Met	0	12	--	79	9-12,UNG
28	The ISUS Institute of Construction Technology	Charter	71	45.4	Academic Watch	Not Met	0	12	--	105	9-12,UNG
29	Cleveland Elementary School	District	70.9	69.4	Academic Watch	Not Met	0	19	Met	434	P,K-8
30	Meadowdale High School	District	70.1	73	Academic Watch	Not Met	0	12	--	1005	9-12
31	Kiser Elementary School	District	69.6	67.4	Academic Emergency	Not Met	0	19	Met	481	P,K-8
32	Patterson/Kennedy Elementary School	District	69.4	71.2	Academic Emergency	Not Met	0	19	Below	753	P,K-8
33	Kemp @ Grant Elementary School	District	68.8	68.7	Academic Watch	Not Met	2	19	Above	390	P,K-8
34	Orville Wright Elementary School	District	67.9	73.7	Academic Emergency	Not Met	0	12	Below	430	K-6,P
35	Dunbar High School	District	67.3	65.1	Academic Emergency	Not Met	0	12	--	623	9-12
*36	New Choices Community School	Charter	67	63.8	Academic Emergency	Not Met	0	15	Met	241	7-12
*36	Omega School Of Excellence	Charter	67	70.1	Academic Emergency	Not Met	1	4	Met	115	K-8
38	Mound Street Health Careers Acadmy	Charter	66.2	46.8	Academic Emergency	Not Met	1	12	--	113	9-12,UNG
39	Mound Street IT Careers Academy	Charter	65.5	41.1	Academic Emergency	Not Met	0	12	--	116	9-12,UNG
40	Thurgood Marshall High School	District	64.9	75.3	Academic Emergency	Not Met	0	12	--	578	9-12
41	Wogaman Elementary School	District	64.8	65.2	Academic Emergency	Not Met	2	19	Below	467	P,K-8

42	City Day Community School	Charter	64.3	62.5	Academic Emergency	Not Met	2	19	Above	129	K-8
43	Edison Elementary School	District	64.2	62.2	Academic Emergency	Not Met	1	15	Met	334	P,K,1-7
44	Meadowdale Elementary School	District	63.8	66.8	Academic Emergency	Not Met	1	19	Below	538	P,K-8
45	Jefferson Montessori I Elementary School	DPS Choice	63.7	67.8	Academic Emergency	Not Met	1	19	Below	495	1-8
46	Wilbur Wright Middle School	District	62.5	61.7	Academic Emergency	Not Met	0	8	Below	512	7-8
47	Dayton Technology Design High School	Charter	62.3	62.7	Academic Emergency	Not Met	2	12	--	119	10-12
48	Rosa Parks PK-8 School	District	61	65.5	Academic Emergency	Not Met	0	19	Below	434	P,K-8
49	Fairview Elementary School	District	59.8	57.2	Academic Emergency	Not Met	1	12	Met	392	K-6,P
50	Life Skills Center of Dayton	Charter	57.9	64.3	Academic Emergency	Not Met	0	12	--	359	9-12
51	Peterson Entrepreneurial Training Enterprise	Charter	56.9	68.8	Academic Emergency	Not Met	0	12	--	220	9-12,UNG
52	Fairview Middle School	District	56.7	59.5	Academic Emergency	Not Met	0	5	Above	154	8
53	Van Cleve Elementary School	District	55.9	62.6	Academic Emergency	Not Met	0	19	Below	364	P,K-8
54	Summit Academy Dayton	Charter	50.1	47.2	Academic Emergency	Not Met	0	8	Above	67	K,1-12,UNG
55	Longfellow Center	District	49.3	0	Academic Emergency	Not Met	1	7	--	528	D,H,P,K,1-12
56	Pace Career Central	Charter	41.2	22.9	Academic Emergency	Not Met	0	11	--	126	7-12,UNG
57	General Chappie James Leadership Academy	Charter	37.7	30.4	Academic Watch	Not Met	0	5	--	82	9-12
58	Arise Academy	Charter	34.3	64.5	Academic Emergency	Not Met	0	11	--	170	K-12
59	Tech Con Institute	Charter	26.7	76.8	Continuous Improvement	Met	0	7	--	77	9-12

Source: Ohio Department of Education

Notes: 1) Rankings are based on Performance Index score for the 2007-08 school year. 2) Schools without a Performance Index score or building Designation were removed. 3) Dayton students have the option to attend any school in the district if space is available. For the purposes of this analysis, however, we are defining district "DPS choice" as those DPS schools that offer a special curriculum or magnet program and enjoy an innovative relationship with the district.

* These schools were tied for the same ranking number.

t.