

2016 - 2017 Report Card for Phoenix Community Learning Ctr

SCHOOL GRADE

Coming in
2018



Achievement

The Achievement component represents the number of students who passed the state tests and how well they performed on them.

COMPONENT GRADE

F

Performance Index

43.3%..... F

Indicators Met

0.0%..... F



Progress

The Progress component looks closely at the growth that all students are making based on their past performances.

COMPONENT GRADE

F

Value Added

Overall..... F

Gifted..... NR

Students with Disabilities..... F

Lowest 20% in Achievement..... F



Gap Closing

The Gap Closing component shows how well schools are meeting the performance expectations for our most vulnerable populations of students in English language arts, math and graduation.

COMPONENT GRADE

F

Annual Measurable Objectives

0.1%..... F



Graduation Rate

The Graduation Rate component looks at the percent of students who are successfully finishing high school with a diploma in four or five years.

COMPONENT GRADE

Not Rated

Graduation Rates

This school is not evaluated for graduation rate because there are not enough students in the graduating class.



K-3 Literacy

The K-3 Literacy component looks at how successful the school is at getting struggling readers on track to proficiency in third grade and beyond.

COMPONENT GRADE

D

K-3 Literacy Improvement

4.3%..... D



Prepared for Success

Whether training in a technical field or preparing for work or college, the Prepared for Success component looks at how well prepared Ohio's students are for all future opportunities.

COMPONENT GRADE

Not Rated

Achievement



The Achievement component represents the number of students who passed the state tests and how well they performed on them.

COMPONENT GRADE

F

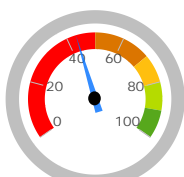
GRADE

F

Performance Index

The Performance Index measures the test results of every student, not just those who score proficient or higher. There are six levels on the index and districts receive points for every student in each of these levels. The higher the achievement level the more the points awarded in the district's index. This rewards schools and districts for improving the performance of all students, regardless of achievement level.

Performance Index

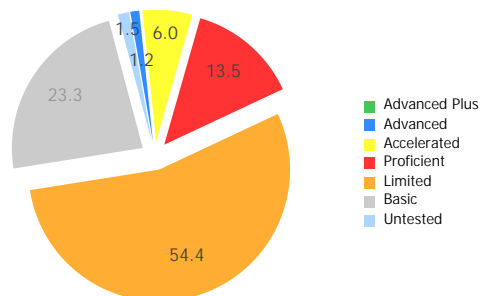


43.3%

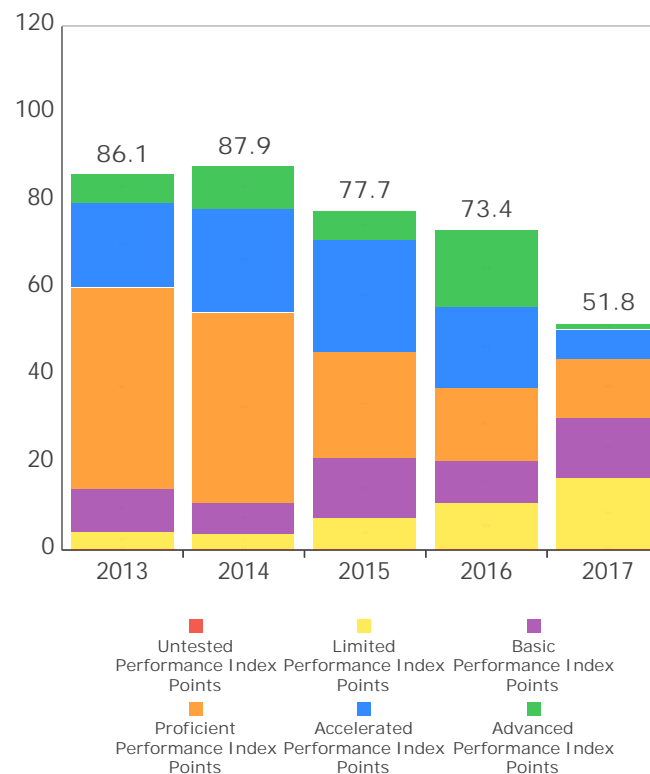
51.9 of a possible 120.0

A = 90.0 - 100.0%
B = 80.0 - 89.9%
C = 70.0 - 79.9%
D = 50.0 - 69.9%
F = 0.0 - 49.9%

Achievement Level	Pct of Students		Points for this Level		Points Received
Advanced Plus	0.0	x	1.3	=	0.0
Advanced	1.2	x	1.2	=	1.5
Accelerated	6.0	x	1.1	=	6.6
Proficient	13.5	x	1.0	=	13.5
Basic	23.3	x	0.6	=	14.0
Limited	54.4	x	0.3	=	16.3
Untested	1.5	x	0.0	=	0.0
				=	51.9



Performance Index Trend



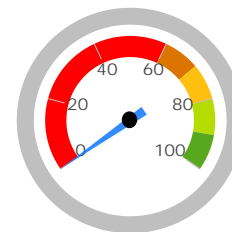
GRADE
F
Indicators Met

Indicators Met measures the percent of students who have passed state tests. It also includes the gifted indicator. Test results are reported for each student in a grade and subject. The passage rate for each indicator is 80%.

Indicators Met %
0.0%

0 out of 19

A = 90.0 - 100.0%
B = 80.0 - 89.9%
C = 70.0 - 79.9%
D = 50.0 - 69.9%
F = 0.0 - 49.9%


Grades 3-5

3rd Grade	English Language Arts	36.2%	✗
	Mathematics	23.4%	✗
4th Grade	English Language Arts	23.2%	✗
	Mathematics	16.9%	✗
	Social Studies	16.9%	✗
5th Grade	English Language Arts	35.9%	✗
	Mathematics	7.1%	✗
	Science	39.5%	✗

Grades 6-8

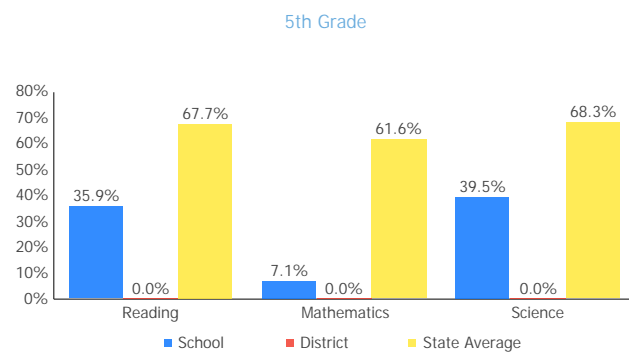
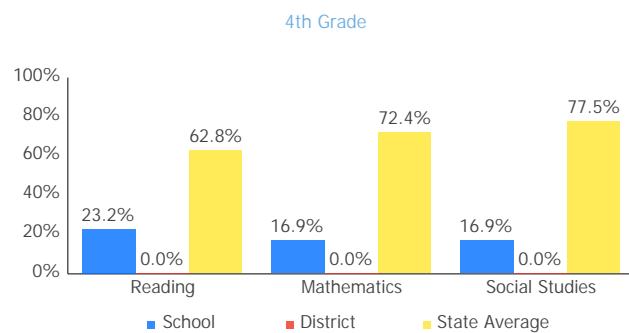
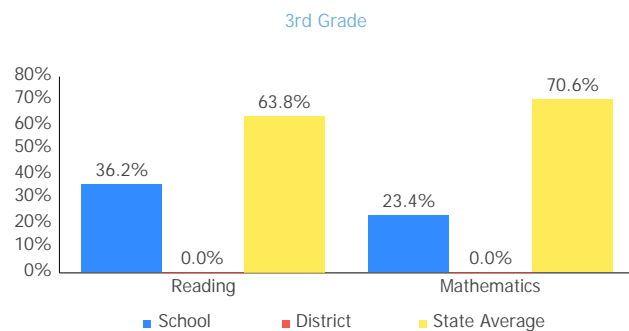
6th Grade	English Language Arts	13.2%	✗
	Mathematics	10.8%	✗
	Social Studies	18.4%	✗
7th Grade	English Language Arts	22.0%	✗
	Mathematics	17.5%	✗
8th Grade	English Language Arts	18.5%	✗
	Mathematics	11.1%	✗
	Science	18.5%	✗

High School

This school does not have enough Ohio Graduation Test results to display this table.

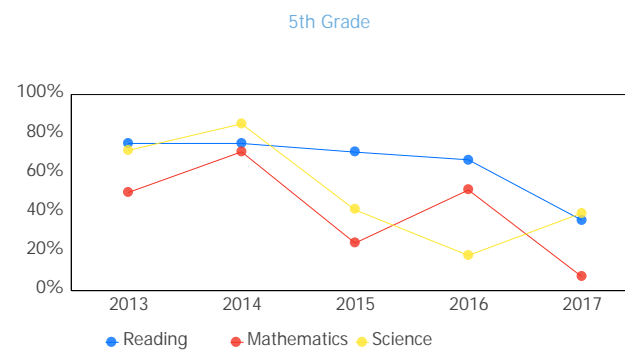
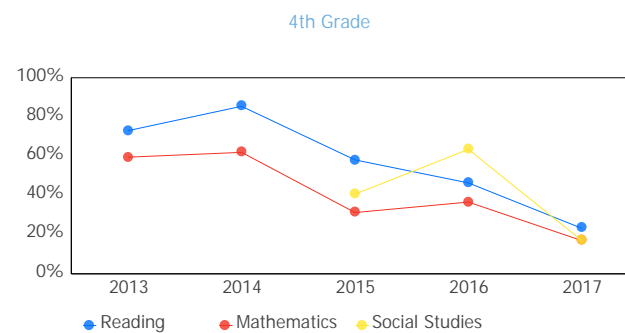
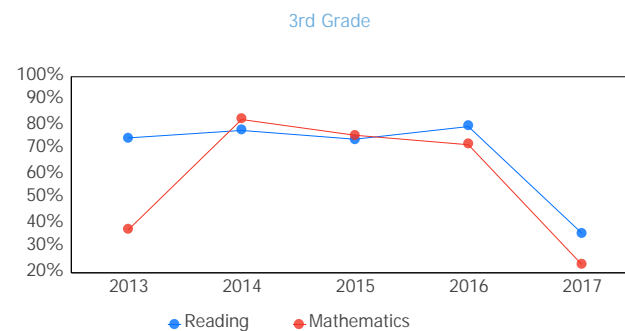
GIFTED INDICATOR NC

Achievement Levels by Grade

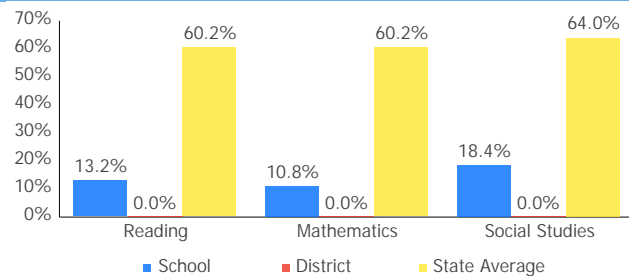


6th Grade

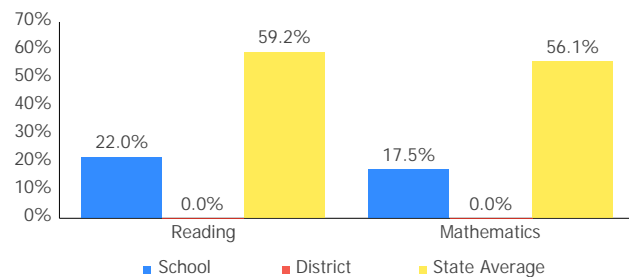
Proficient Percent Trend by Grade



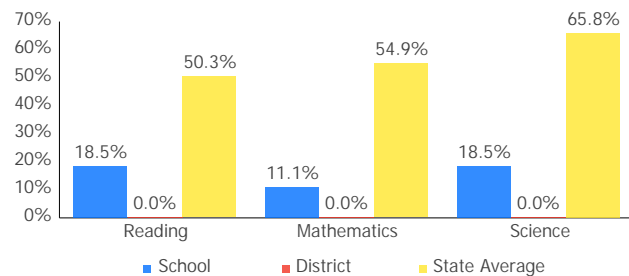
6th Grade



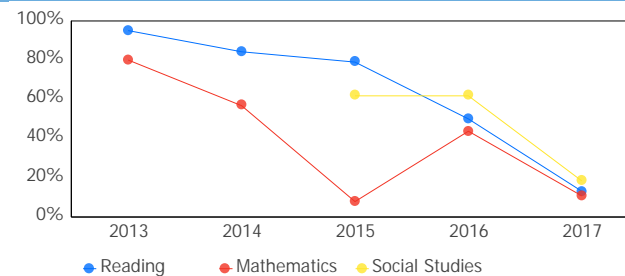
7th Grade



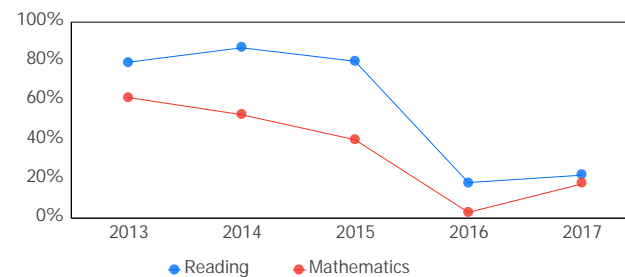
8th Grade



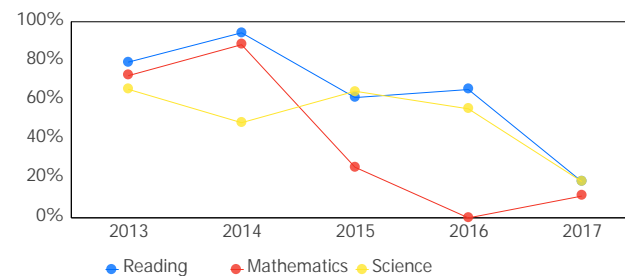
High School



7th Grade

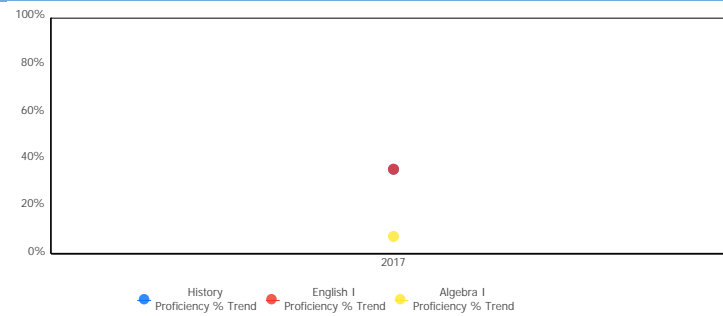
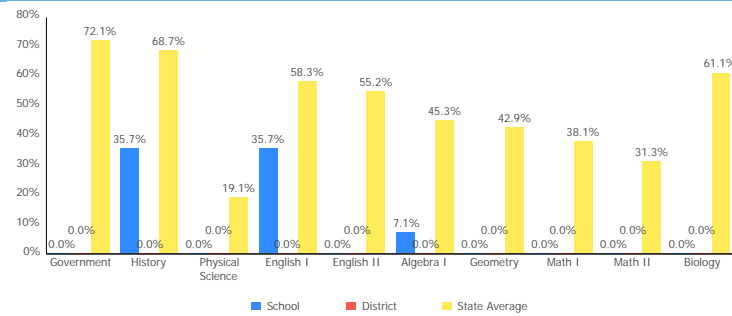


8th Grade



High School

2016 - 2017 Report Card for Phoenix Community Learning Ctr



Gifted Students



The Gifted Students data and Indicator highlight the opportunities for and performance of gifted students. The dashboard answers several questions: How many students are identified as gifted and in what categories? How many of those students are receiving gifted services? How well are those gifted students performing? The Gifted Indicator measures whether opportunity and performance expectations are being met for gifted students.

INDICATOR

NC

Overview

The Gifted Indicator is derived from three components: Gifted Value Added grade, the Performance Index for gifted students, and a Gifted Inputs score.

Gifted Value Added

Value Added Grade: NR
Value Added Met?: NC

Schools must earn a Gifted Value Added grade of C or better to meet the Gifted Value Added component.

Gifted Performance Index

Performance Index: NC
Performance Index Met?: NC

Schools with at least 10 unique students in the Gifted Performance Index calculation must score 117.0 or better to meet the Gifted Performance Index component.

Gifted Inputs

Total Points: 0.0
Gifted Inputs Met?: Not Met

Points are earned based on identification and services provided to gifted students. Schools must earn 80 or more points out of a possible 100 to meet the Gifted Inputs component.

Gifted Indicator Final Result

INDICATOR

NC

The Gifted Indicator is Met if none of the three components are Not Met. Gifted Inputs alone cannot determine the Gifted Indicator, however; if both the Value Added and Performance Index components are NC, then the Gifted Indicator is also NC.

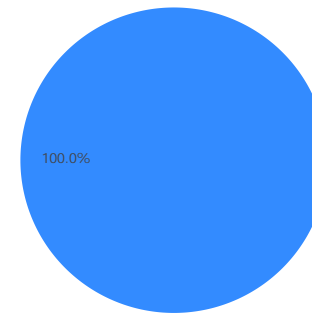
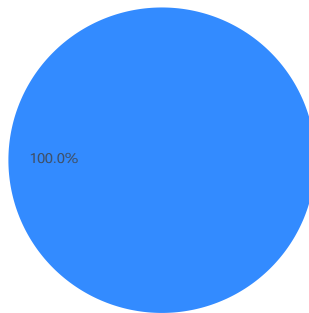
A performance index cannot be calculated for this school because there are not enough students.

Gifted Indicator

The Gifted Inputs calculation assigns points based on the percentage of students identified and served in eight categories (factors). The points earned for each category are totaled to determine the final Met/Not Met determination for the Gifted Input component.

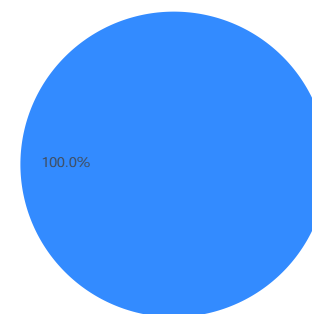
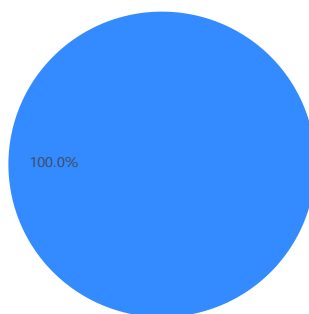
Reading, Math, Science, Social Studies, and Superior Cognitive Abilities


Visual/Performing Arts and Creative Thinking





Disadvantaged Students

Minority Students



 Receiving Gifted Services

 Identified as Gifted, but not receiving services

 Not Identified as Gifted

Progress



The Progress component looks closely at the growth that all students are making based on their past performances.

COMPONENT GRADE

F

GRADE

F

Overall

This measures the progress for all students in math, ELA, science and social studies using tests in grades 4-8 and some end-of-course exams.

GRADE

NR

Gifted Students

This measures the progress for students identified as gifted in reading, math, science, social studies and/or superior cognitive ability.

GRADE

F

Students in the Lowest 20% in Achievement

This measures the progress for students identified as the lowest 20% statewide in reading, math, science or social studies achievement.

GRADE

F

Students with Disabilities

This measures the progress for students with disabilities.

Progress Details

These tables show the Progress scores by test grade and subject for students in grades 4-8 and some end-of-course tests, and includes up to three years of data as available.

Test Grade	Progress Score				
	English Language Arts	Mathematics	Social Studies	Science	All Tests
All Grades			Dark Green		
4th Grade					
5th Grade					
6th Grade			Dark Green		
7th Grade					
8th Grade	Dark Green				
Test Grade		Progress Score	Test Grade		Progress Score
High School	English I		High School	Algebra I	

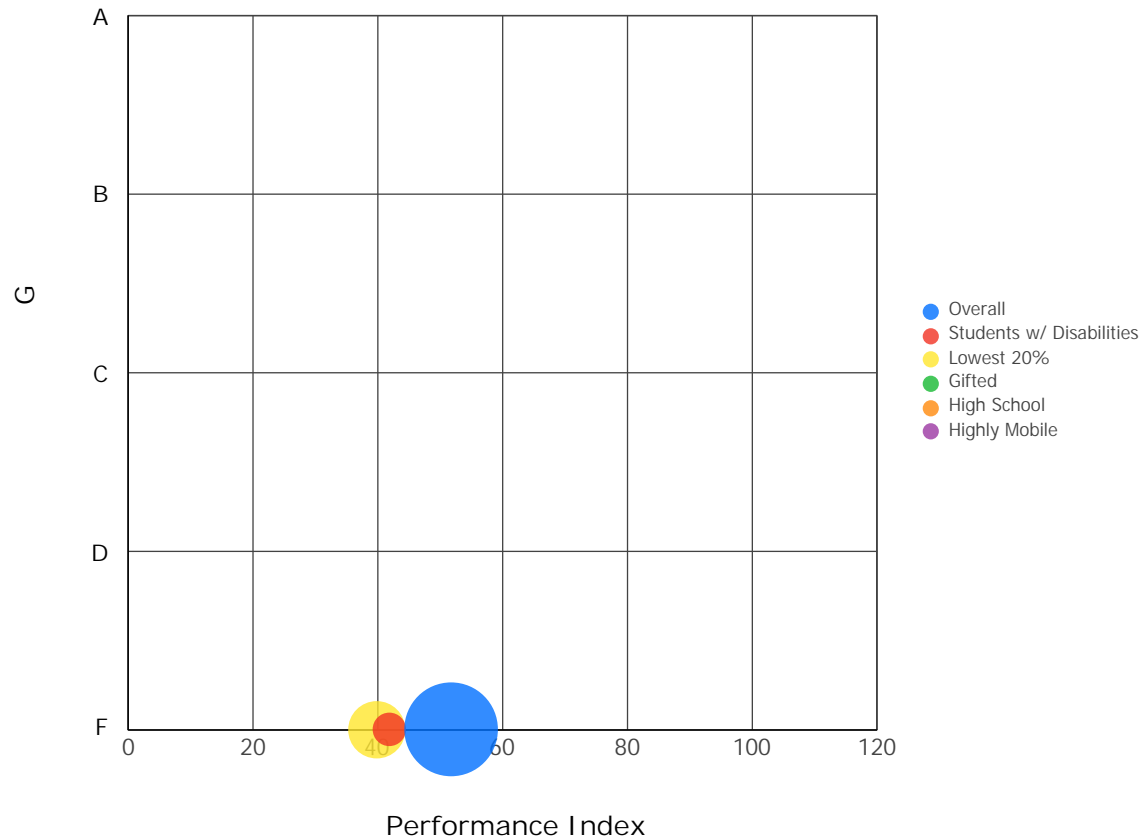
What do the colors mean?

The Progress Component measures how groups of students made progress as compared to the statewide expectation of growth. The expectation of growth is based on how students in the group performed, on average, compared to other students like them across the state

Dark Green	Students made more progress than expected – significant evidence
Light Green	Students made more progress than expected – moderate evidence
Yellow	Students made progress similar to the statewide expectation – evidence
Orange	Students made less progress than expected – moderate evidence
Red	Students made less progress than expected – significant evidence

Progress vs. Performance Index

This bubble chart shows the relationship between each subgroup's Performance Index results (horizontal axis) to the Value-Added letter grade (vertical axis). The size of the bubble represents the size of the student subgroup.



Gap Closing



The Gap Closing component shows how well schools are meeting the performance expectations for our most vulnerable populations of students in English language arts, math and graduation.

COMPONENT GRADE

F

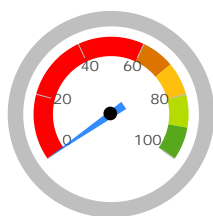
GRADE

F

Annual Measurable Objectives

Annual Measurable Objectives (AMOs) compare the performance of student groups to a state goal which is displayed as the red line in the following charts. These charts show how well each group achieves that goal in reading, math and graduation – and emphasize any achievement gaps that exist between groups. The ultimate goal is for all groups to achieve at high levels.

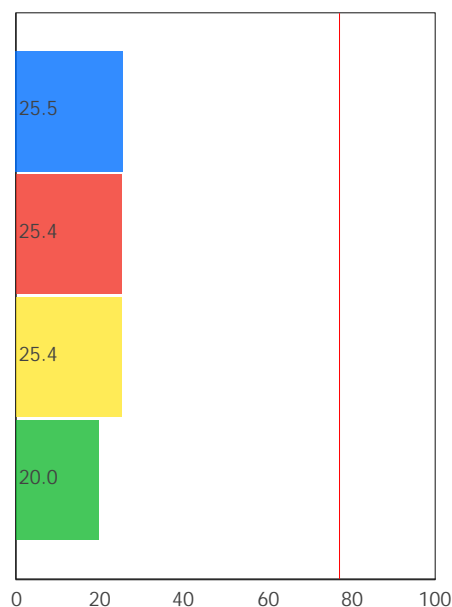
AMO Points



0.1%

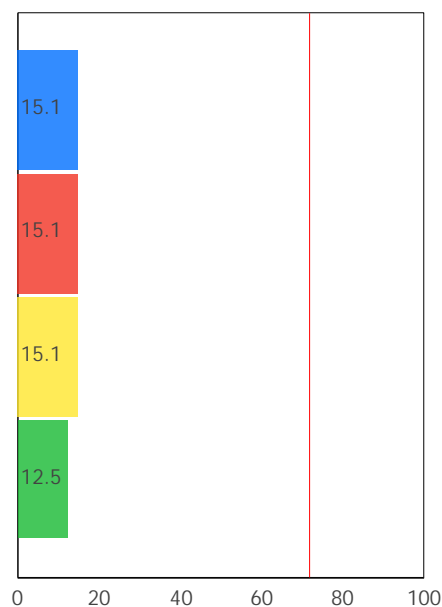
A = 90.0 - 100.0%
B = 80.0 - 89.9%
C = 70.0 - 79.9%
D = 60.0 - 69.9%
F = 0.0 - 59.9%

English Language Arts



Econ Disadvantage All Students
African American Students w/ Disab...

Math



All Students Econ Disadvantage
African American Students w/ Disab...

Graduation Rate

This school does not have an Annual Measurable Objective for Graduation Rate because there were not enough students to evaluate.

The red line on each graph identifies the Annual Measurable Objective. The 2017 AMO for ELA is 77.1%, for Math is 72%, and for Graduation Rate is 85.1%. Subgroups with fewer than 30 students are not rated and do not appear on the graphs.

Graduation Rate



The Graduation Rate component looks at the percent of students who are successfully finishing high school with a diploma in four or five years.

COMPONENT GRADE

Not Rated

This school has not been assigned
a grade for Graduation Rate
because there were not enough
students to evaluate.

The Graduation Rate graph that would appear in this space cannot be displayed because there were not enough students to evaluate.

K-3 Literacy



The K-3 Literacy component looks at how successful the school is at getting struggling readers on track to proficiency in third grade and beyond.

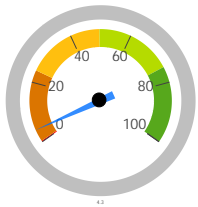
COMPONENT GRADE

D

GRADE

D

K-3 Literacy
Improvement



4.3%

A = 74.7 - 100.0%
B = 49.3 - 74.6%
C = 23.9 - 49.2%
D = -1.5 - 23.8%
F = <= -1.6%

In Your School...

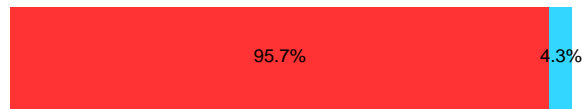
12 Students
Moved to On
Track - 9 RIMP
Deductions



69 Students
Started Off Track

= 4.3%

RIMP = Reading Improvement and Monitoring Plan. Districts are required to create a RIMP for students not on track to be proficient in English Language Arts by the end of 3rd grade.



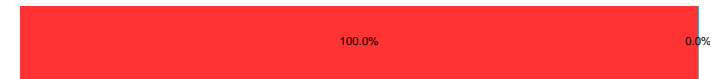
■ Remained Off Track ■ Moved to On Track

Details of Measure

Year 1



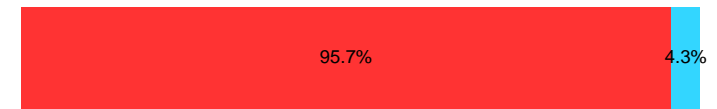
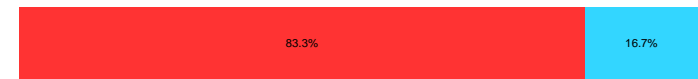
Year 2



Year 3

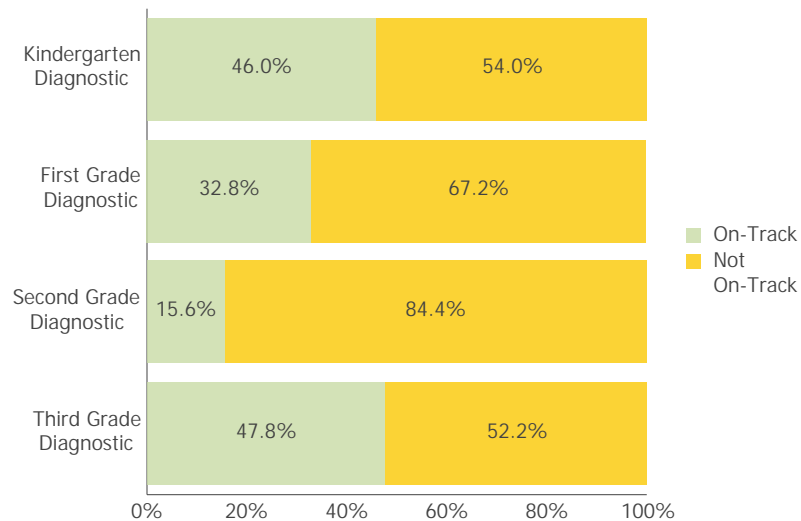


Year 4



■ Remained Off Track ■ Moved to On Track

Percentage On-Track in Reading Diagnostic



This chart shows the overall percentage of students that were on-track/not-on-track for each grade level reading diagnostic in 2016-2017.

Third Grade Reading Guarantee

Ohio's Third Grade Reading Guarantee ensures that students are successful in reading before moving on to fourth grade. Schools must provide supports for struggling readers in early grades. If a child appears to be falling behind in reading, the school will immediately start a Reading Improvement and Monitoring Plan. The program ensures that every struggling reader gets the support he or she needs to learn and achieve.

Students have multiple opportunities to meet promotion requirements including meeting a minimum promotion score on the third grade state reading tests given in the fall and spring. Students have an additional opportunity to take the state assessment in the summer, as well as a district-determined alternative assessment.

The Parent Roadmap is available to help parents understand how the Third Grade Reading Guarantee applies to your child.

How many third graders met the Third Grade Reading Guarantee requirements for promotion to 4th grade? **73.2%**

How many third graders scored proficient on the state Reading test? **36.2%**

Prepared for Success



Whether training in a technical field or preparing for work or college, the Prepared for Success component looks at how well prepared Ohio's students are for all future opportunities.

COMPONENT GRADE

Not Rated

COMPONENT GRADE

Not Rated

This data cannot be shown because there are not enough students in the graduating class of 2016 to evaluate.

How Prepared were Your 2015 and 2016 Graduating Classes?

ACT: Participation

ACT: Remediation Free

SAT: Participation

SAT: Remediation Free

Honors Diploma

Industry-Recognized
Credential

Advanced Placement:
Participation

AP: Exam Score of 3 or
Better

Dual Enrollment Credit

International
Baccalaureate

IB: Exam Score of 4 or
Better

This data cannot be shown because there are not enough students in the graduating class of 2016 to evaluate.

Note: These data represent students in the 4-year and 5-year graduation rates, i.e. students who entered 9th grade in 2012 and 2013.

Outcomes after High School Graduation

Districts and schools have long-term impacts on student outcomes. The Prepared for Success component provides information on how schools prepare students for different pathways of college and career success. It also provides insights on how those students do once they leave high school. What happens beyond the diploma is an important indicator of how well schools are preparing students.

The University System of Ohio provides [district reports](#) on enrollment and remediation of high school graduates attending in-state, public colleges and universities.

What Percentage of the 2014 Graduating Class Entered College within Two Years?

NC

This graph is not displayed because the result is Not Calculated.

What Percentage of the 2010 Graduating Class Graduated from College within Six Years of Leaving High School?

NC

This graph is not displayed because the result is Not Calculated.

Note: These data represent students in the 4-year and 5-year graduation rates, i.e. students who entered 9th grade in 2012 and 2013.



Principal: Elaine M. Wilson
Address: 3595 Washington Ave
Cincinnati OH 45229-2609

Phone: (513) 351-5801
Career Technical
Planning District: Cincinnati City CTPD

Directory information current as of the 2016-2017 Report Card publication date.

Your School's Students

Average
Daily
Enrollment:

474

Number of
Limited English
Proficiency
Students
Excluded from
Accountability
Calculations:

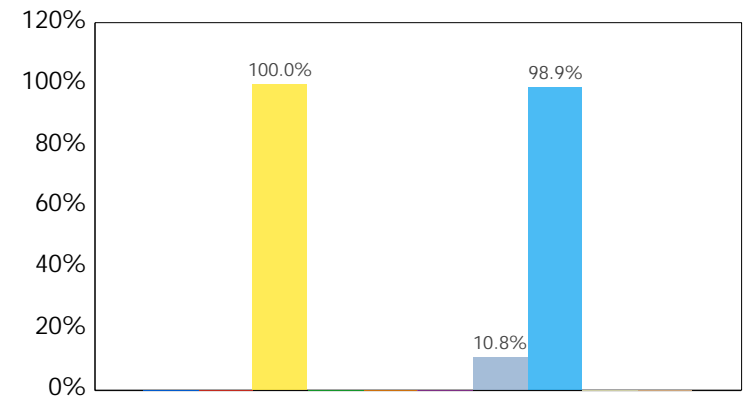
--

Enrollment by Subgroup

	Enrollment #	Enrollment %
Am. Indian / Alaskan Native	NC	
Asian or Pacific Islander	NC	
Black, Non-Hispanic	474	100.0%
Hispanic	NC	
Multiracial	NC	
White, Non-Hispanic	NC	
Students with Disabilities	51	10.8%
Economically Disadvantaged	469	98.9%
Limited English Proficiency	NC	
Migrant	NC	

NC = Not Calculated because there are fewer than 10 in the group

State and federal law require an annual assessment of Limited English Proficient (LEP) students to measure their English language proficiency. The Ohio English Language Proficiency Assessment (OELPA) is the assessment used in Ohio to gauge LEP students' growth in learning English. For information about your district's OELPA results, see the Department of Education's web site at <http://education.ohio.gov>.



■ American Indian or Alaska...
■ Asian or Pacific Islander
■ Black, Non-Hispanic
■ Hispanic
■ Multiracial
■ White, Non-Hispanic
■ Students with Disabilities
■ Economic Disadvantage
■ Limited English Proficiency
■ Migrant

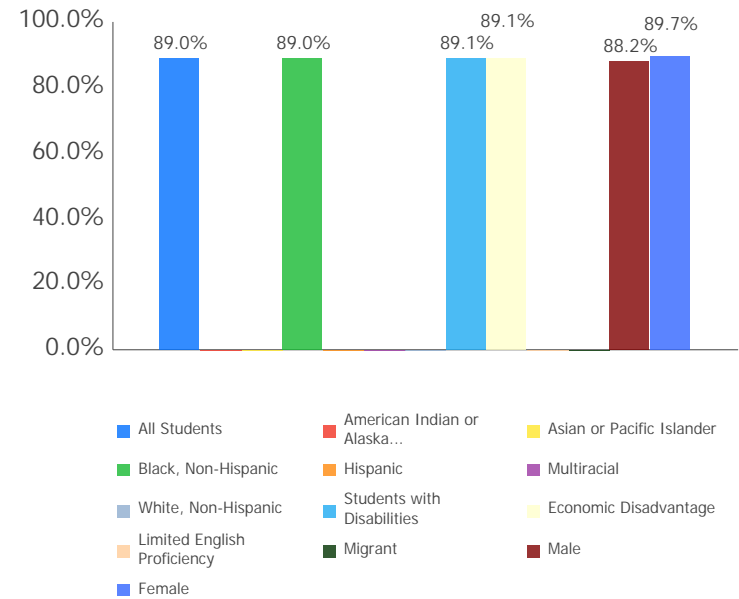
Attendance Rate

Chronic
Absenteeism
Rate:

47.3%

All Students	89.0%
Am. Indian / Alaskan Native	NC
Asian or Pacific Islander	NC
Black, Non-Hispanic	89.0%
Hispanic	NC
Multiracial	NC
White, Non-Hispanic	NC
Students with Disabilities	89.1%
Economic Disadvantage	89.1%
Limited English Proficiency	NC
Migrant	NC
Male	88.2%
Female	89.7%

NC = Not Calculated because there are fewer than 10 in the group



Attendance Rate is not shown if enrollment is less than 10.

Mobility Rates by Subgroup

	Student Mobility %
All Students	0.0%
Am. Indian / Alaskan Native	NC
Asian or Pacific Islander	NC
Black, Non-Hispanic	0.0%
Hispanic	NC
Multiracial	NC
White, Non-Hispanic	NC
Students with Disabilities	0.0%
Economically Disadvantaged	0.0%
Limited English Proficiency	NC
Migrant	NC

NC = Not Calculated because there are fewer than 10 in the group

A mobility rate chart cannot be displayed for this school because either there are not enough students to evaluate in any subgroup or all calculated results are 0.0%.

Your School's Teachers

Your School's Poverty Status: High	Your School	Your District
Percentage of teachers with at least a Bachelor's Degree	100.0	--
Percentage of teachers with at least a Master's Degree	5.3	--
Percentage of core academic subject and elementary classes not taught by Highly Qualified Teachers	21.2	--
Percentage of core academic subject and elementary classes taught by properly certified teachers	100	--
Percentage of core academic subject elementary and secondary classes taught by teachers with temporary, conditional or long-term substitute certification/licensure	0	--
Lead or Senior Teachers:	0.0	0.0

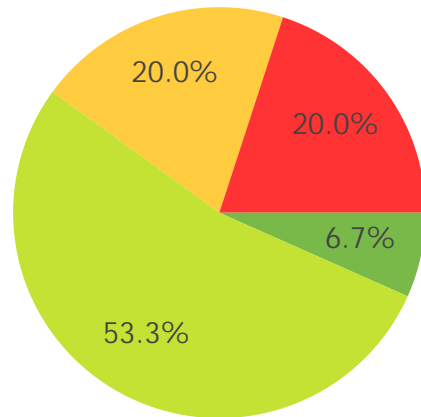
A district's high-poverty schools are those ranked in the top quartile based on the percentage of economically disadvantaged students. Low-poverty schools are those ranked in the bottom quartile based on the percentage of economically disadvantaged students. A district may have buildings in both quartiles, in just one quartile or in neither quartile.

NC = Not Calculated because there are fewer than 10 in the group

Number of Teachers by Program Area

	#	State Avg per 1000 Students
General Education Teachers	19.0	46.8
Career-Technical Teachers	0.0	2.3
Special Education Teachers	0.0	10.9
Teacher Aides	0.0	7.3
Gifted Intervention Specialists	0.0	0.6
Fine Arts Teachers	0.0	3.0
Music Teachers	1.0	2.5
Physical Education Teachers	0.0	2.8
ELL Specialists	0.0	0.3

Teacher Evaluations



Accomplished Skilled Developing
Ineffective Not Complete

Wellness and Physical Education

The extent to which students are successful in meeting the benchmarks contained in Ohio's physical education standards

Moderate Success

Compliance with the federal requirement for implementing a local wellness policy

X

Elected to administer BMI screening

X

Participation in Physical Activity Pilot Program

X

Financial Data



These measures answer several questions about spending and performance. How much is spent on Classroom instruction? How much, on average, is spent on each student? What is the source of the revenue? How do these measures compare to other districts and schools?

Comparison Group: Community Schools with Enrollment between 150 and 499

Classroom Spending Data

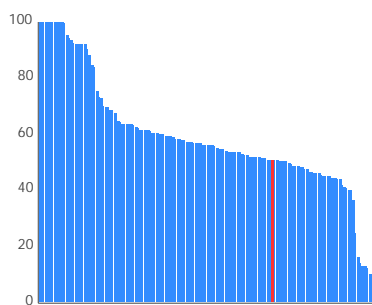
What percent of funds are spent on classroom instruction?

51.0%

How does this school rank in comparison to other schools of similar size?

104 out of 165

A rank of 1 indicates the highest percent spent on classroom instruction.

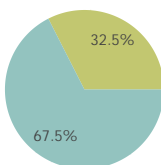
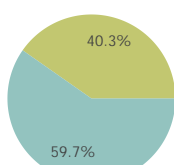
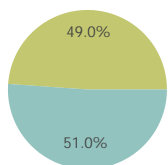


Rankings subject to change due to data appeals.

School

Comparison Group

State



Classroom Instruction



Non-Classroom Instruction

Spending per Pupil Data

	School	State
Operating Spending per Pupil	\$5,698	\$9,150
Classroom Instruction	\$2,906	\$6,180
Non-Classroom Spending	\$2,792	\$2,970



Phoenix Community Learning Ctr IS among the 20% of traditional community schools with the lowest operating expenditures per pupil.

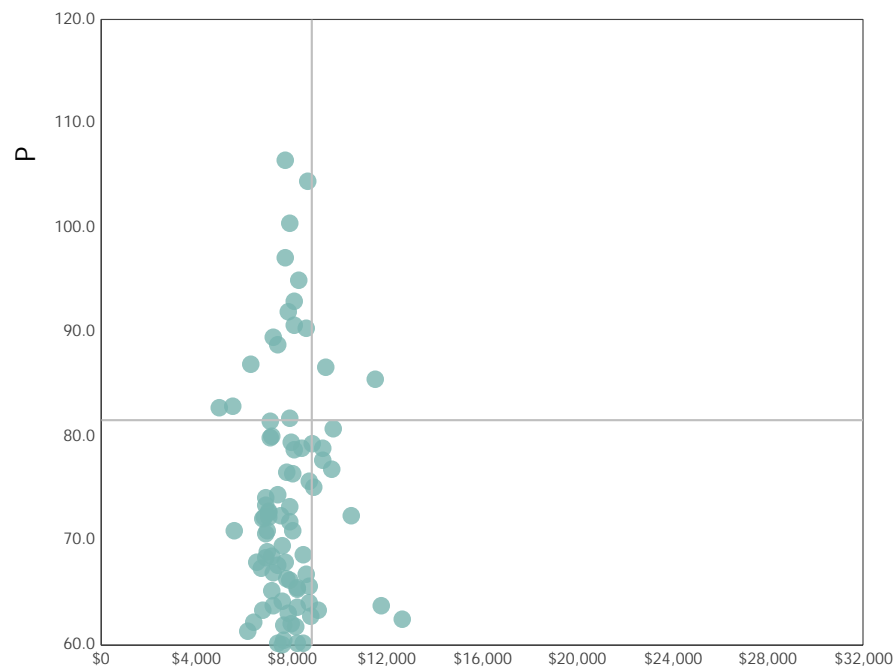


Phoenix Community Learning Ctr IS NOT among the 20% of traditional community schools with the highest academic performance index scores.

Spending and Performance

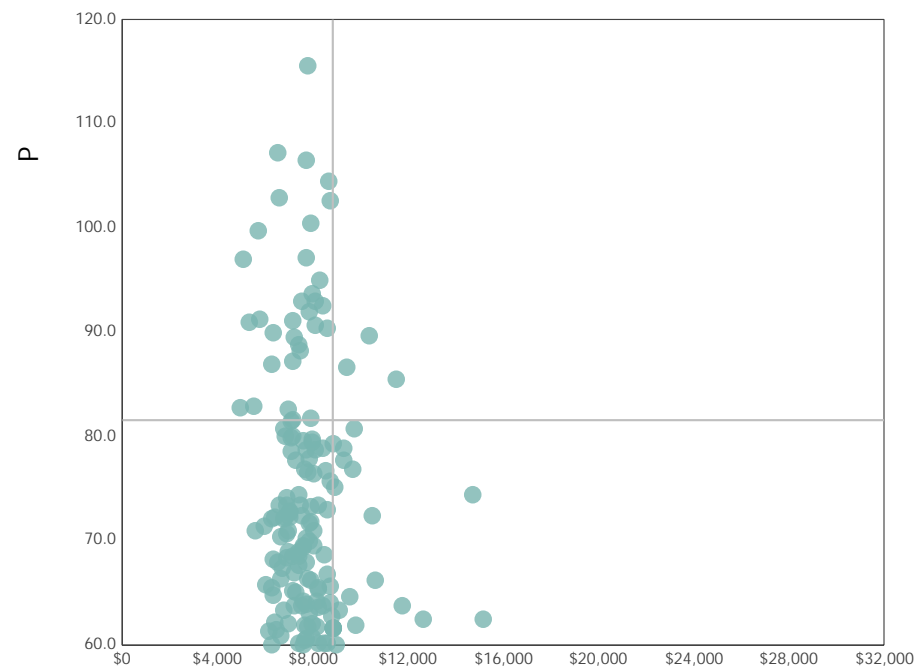
This measure answers the question – what is the relationship of average spending per student to performance, and how does that compare to similar districts and schools?

Comparison Group



Spending per Pupil

All Community & STEM Schools



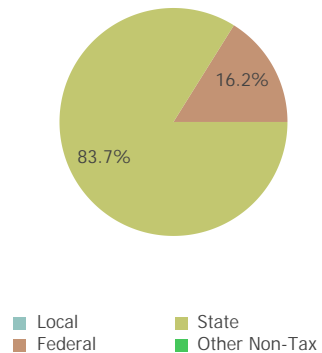
Spending per Pupil

The quadrant lines on these graphs represent the statewide average performance index score and the statewide average spending per pupil for all Community and STEM schools.

Source of Revenue

Source of Funds	School		State Total	
Local	\$0	0.0%	\$9,013,382,621	39.7%
State	\$3,623,639	83.7%	\$10,329,964,470	45.5%
Federal	\$702,813	16.2%	\$1,689,939,468	7.4%
Other Non-Tax	\$1,251	0.0%	\$1,662,319,384	7.3%
Total	\$4,327,703	100.0%	\$22,695,605,944	100.0%

School



State

