

# 2016 - 2017 Report Card for DECA PREP

## SCHOOL GRADE

Coming in  
2018



### Achievement

The Achievement component represents the number of students who passed the state tests and how well they performed on them.

#### COMPONENT GRADE

D

Performance Index

65.5%..... D

Indicators Met

6.3%..... F



### Progress

The Progress component looks closely at the growth that all students are making based on their past performances.

#### COMPONENT GRADE

B

Value Added

Overall..... A

Gifted..... NR

Students with Disabilities..... D

Lowest 20% in Achievement..... A



### Gap Closing

The Gap Closing component shows how well schools are meeting the performance expectations for our most vulnerable populations of students in English language arts, math and graduation.

#### COMPONENT GRADE

D

Annual Measurable Objectives

62.7%..... D



### Graduation Rate

The Graduation Rate component looks at the percent of students who are successfully finishing high school with a diploma in four or five years.

#### COMPONENT GRADE

Not Rated

Graduation Rates

This school is not evaluated for graduation rate because there are not enough students in the graduating class.



### K-3 Literacy

The K-3 Literacy component looks at how successful the school is at getting struggling readers on track to proficiency in third grade and beyond.

#### COMPONENT GRADE

D

K-3 Literacy Improvement

3.6%..... D



### Prepared for Success

Whether training in a technical field or preparing for work or college, the Prepared for Success component looks at how well prepared Ohio's students are for all future opportunities.

#### COMPONENT GRADE

Not Rated

## Achievement



The Achievement component represents the number of students who passed the state tests and how well they performed on them.

COMPONENT GRADE

D

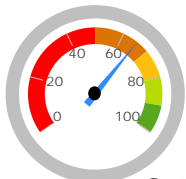
GRADE

D

### Performance Index

The Performance Index measures the test results of every student, not just those who score proficient or higher. There are six levels on the index and districts receive points for every student in each of these levels. The higher the achievement level the more the points awarded in the district's index. This rewards schools and districts for improving the performance of all students, regardless of achievement level.

#### Performance Index

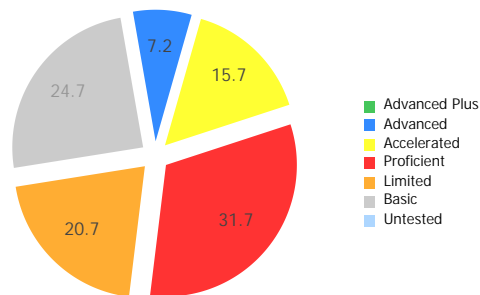


65.5%

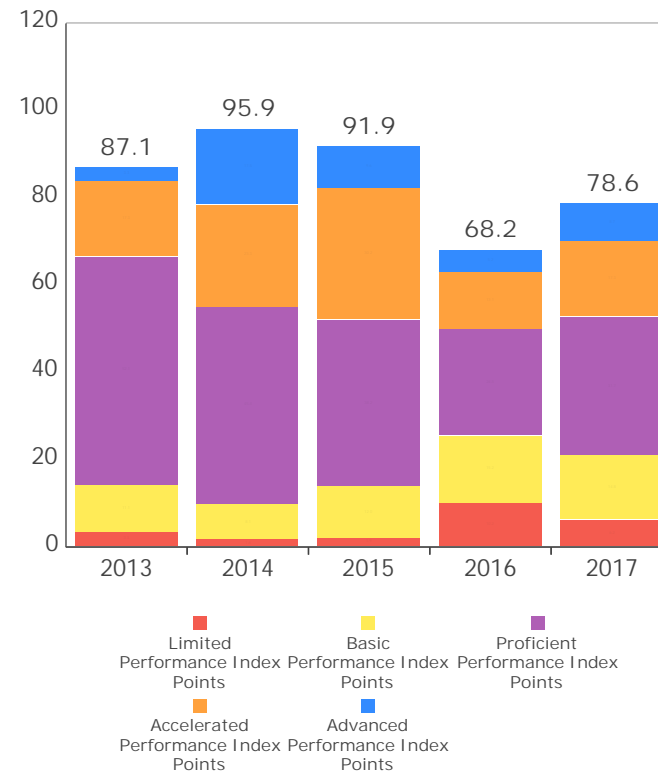
78.6 of a possible 120.0

A = 90.0 - 100.0%  
B = 80.0 - 89.9%  
C = 70.0 - 79.9%  
D = 50.0 - 69.9%  
F = 0.0 - 49.9%

Achievement Level	Pct of Students		Points for this Level		Points Received
Advanced Plus	0.0	x	1.3	=	0.0
Advanced	7.2	x	1.2	=	8.7
Accelerated	15.7	x	1.1	=	17.3
Proficient	31.7	x	1.0	=	31.7
Basic	24.7	x	0.6	=	14.8
Limited	20.7	x	0.3	=	6.2
Untested	0.0	x	0.0	=	0.0
				=	78.6



#### Performance Index Trend



## GRADE

F

## Indicators Met

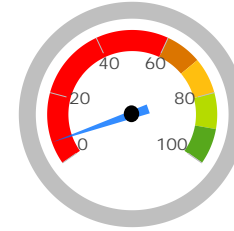
Indicators Met measures the percent of students who have passed state tests. It also includes the gifted indicator. Test results are reported for each student in a grade and subject. The passage rate for each indicator is 80%.

Indicators Met %

6.3%

1 out of 16

A = 90.0 - 100.0%  
B = 80.0 - 89.9%  
C = 70.0 - 79.9%  
D = 50.0 - 69.9%  
F = 0.0 - 49.9%



## Grades 3-5

<b>3rd Grade</b>	English Language Arts	61.9%	✗
	Mathematics	60.0%	✗
<b>4th Grade</b>	English Language Arts	42.0%	✗
	Mathematics	20.5%	✗
	Social Studies	29.5%	✗
<b>5th Grade</b>	English Language Arts	65.6%	✗
	Mathematics	43.3%	✗
	Science	62.2%	✗

## Grades 6-8

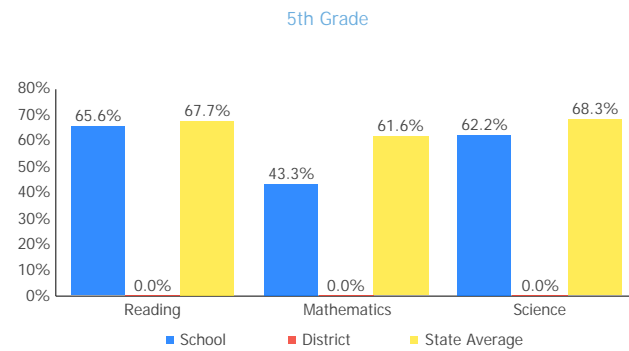
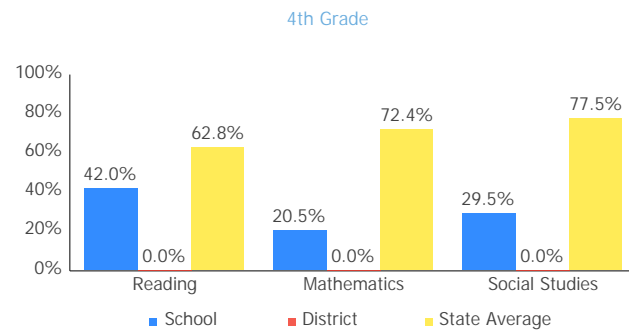
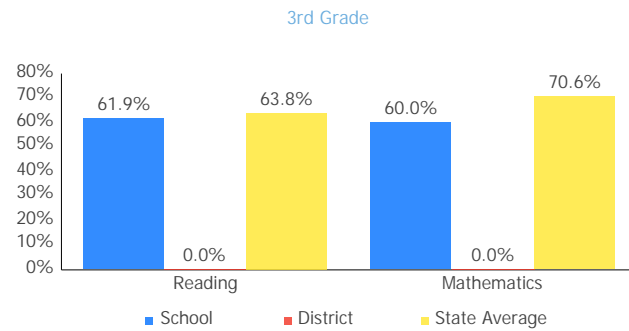
<b>6th Grade</b>	English Language Arts	70.0%	✗
	Mathematics	36.3%	✗
	Social Studies	62.5%	✗
<b>7th Grade</b>	English Language Arts	62.1%	✗
	Mathematics	62.1%	✗
<b>8th Grade</b>	English Language Arts	56.4%	✗
	Mathematics	85.1%	✓
	Science	53.2%	✗

## High School

This school does not have enough Ohio Graduation Test results to display this table.

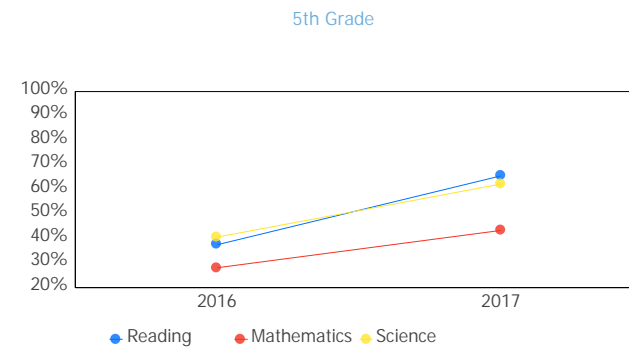
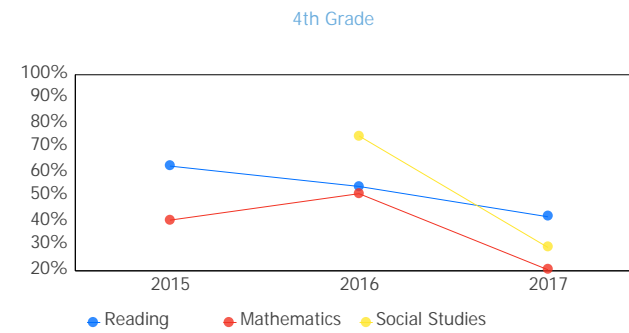
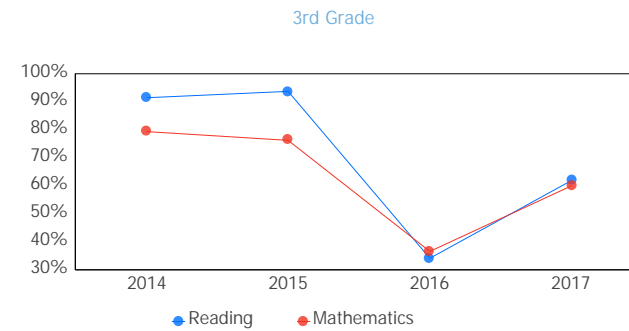
GIFTED INDICATOR NC

### Achievement Levels by Grade



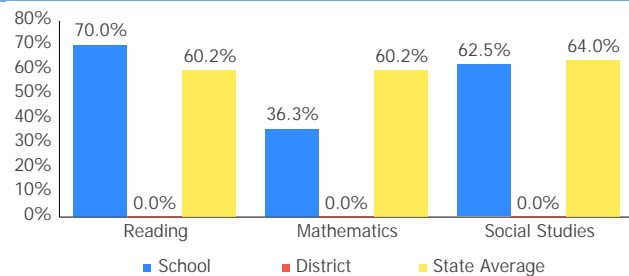
### 6th Grade

### Proficient Percent Trend by Grade

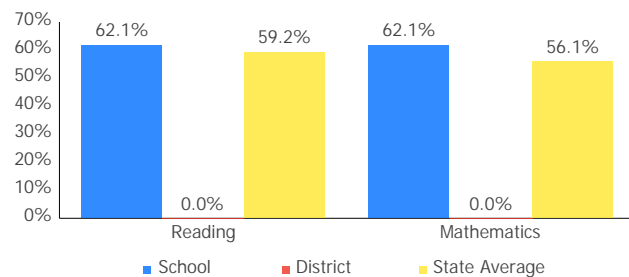


### 6th Grade

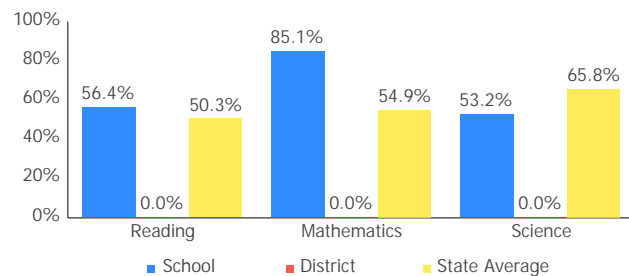
## 2016 - 2017 Report Card for DECA PREP



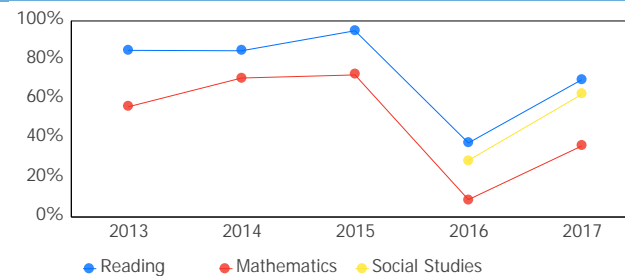
7th Grade



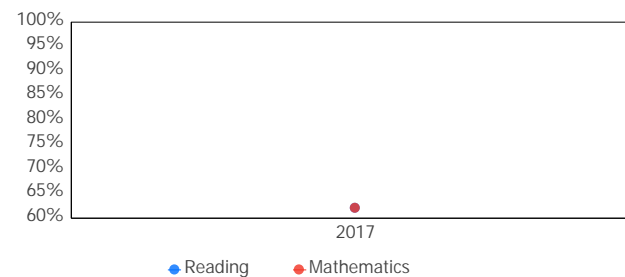
8th Grade



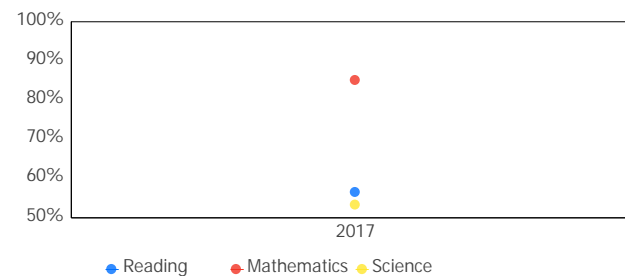
High School



7th Grade

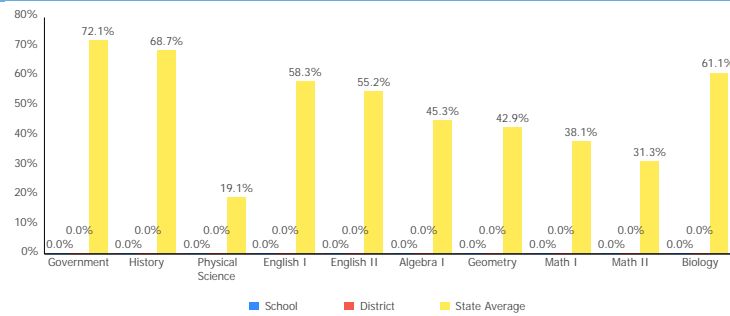


8th Grade



High School

## 2016 - 2017 Report Card for DECA PREP



No data returned for this view. This might be because the applied filter excludes all data.

## Gifted Students



The Gifted Students data and Indicator highlight the opportunities for and performance of gifted students. The dashboard answers several questions: How many students are identified as gifted and in what categories? How many of those students are receiving gifted services? How well are those gifted students performing? The Gifted Indicator measures whether opportunity and performance expectations are being met for gifted students.

### INDICATOR

NC

### Overview

The Gifted Indicator is derived from three components: Gifted Value Added grade, the Performance Index for gifted students, and a Gifted Inputs score.

#### Gifted Value Added

Value Added Grade: NR  
Value Added Met?: NC

Schools must earn a Gifted Value Added grade of C or better to meet the Gifted Value Added component.

#### Gifted Performance Index

Performance Index: NC  
Performance Index Met?: NC

Schools with at least 10 unique students in the Gifted Performance Index calculation must score 117.0 or better to meet the Gifted Performance Index component.

#### Gifted Inputs

Total Points: 0.0  
Gifted Inputs Met?: Not Met

Points are earned based on identification and services provided to gifted students. Schools must earn 80 or more points out of a possible 100 to meet the Gifted Inputs component.

#### Gifted Indicator Final Result

### INDICATOR

NC

The Gifted Indicator is Met if none of the three components are Not Met. Gifted Inputs alone cannot determine the Gifted Indicator, however; if both the Value Added and Performance Index components are NC, then the Gifted Indicator is also NC.

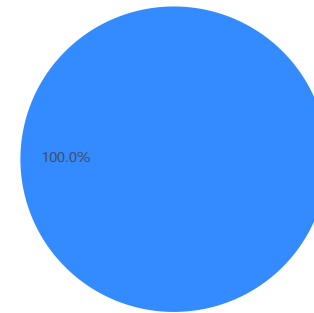
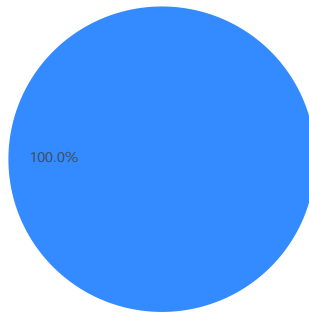
A performance index cannot be calculated for this school because there are not enough students.

## Gifted Indicator

The Gifted Inputs calculation assigns points based on the percentage of students identified and served in eight categories (factors). The points earned for each category are totaled to determine the final Met/Not Met determination for the Gifted Input component.

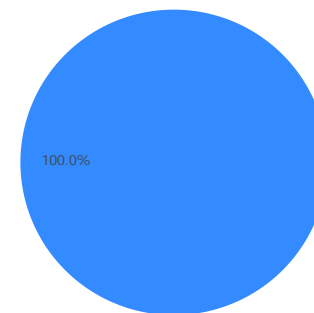
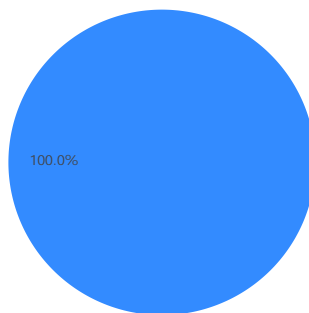
Reading, Math, Science, Social Studies, and Superior Cognitive Abilities

Visual/Performing Arts and Creative Thinking



Disadvantaged Students

Minority Students



Receiving Gifted Services



Identified as Gifted, but  
not receiving services



Not Identified as Gifted



## Progress



The Progress component looks closely at the growth that all students are making based on their past performances.

### COMPONENT GRADE

# B

#### GRADE

# A

#### Overall

This measures the progress for all students in math, ELA, science and social studies using tests in grades 4-8 and some end-of-course exams.

#### GRADE

# NR

#### Gifted Students

This measures the progress for students identified as gifted in reading, math, science, social studies and/or superior cognitive ability.

#### GRADE

# A

#### Students in the Lowest 20% in Achievement

This measures the progress for students identified as the lowest 20% statewide in reading, math, science or social studies achievement.

#### GRADE

# D

#### Students with Disabilities

This measures the progress for students with disabilities.

### Progress Details

These tables show the Progress scores by test grade and subject for students in grades 4-8 and some end-of-course tests, and includes up to three years of data as available.

Test Grade	Progress Score				
	English Language Arts	Mathematics	Social Studies	Science	All Tests
All Grades	Dark Green	Dark Green	Dark Green		Dark Green
4th Grade					
5th Grade					
6th Grade	Dark Green	Dark Green	Dark Green		Dark Green
7th Grade	Dark Green	Dark Green			Dark Green
8th Grade					

High School English  
Language Arts Value Added  
data is not available for this  
school

High School Math Value Added  
data is not available for this  
school

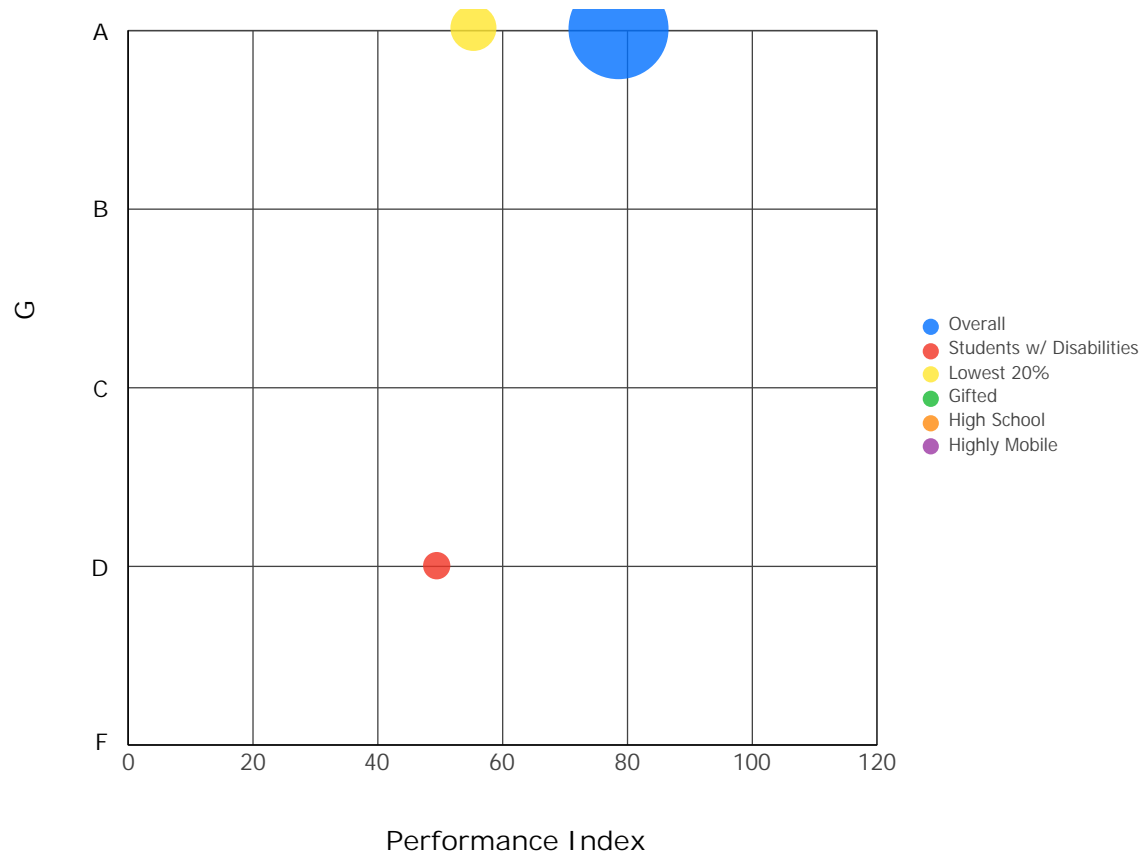
#### What do the colors mean?

The Progress Component measures how groups of students made progress as compared to the statewide expectation of growth. The expectation of growth is based on how students in the group performed, on average, compared to other students like them across the state

Dark Green	Students made more progress than expected – significant evidence
Light Green	Students made more progress than expected – moderate evidence
Yellow	Students made progress similar to the statewide expectation – evidence
Orange	Students made less progress than expected – moderate evidence
Red	Students made less progress than expected – significant evidence

### Progress vs. Performance Index

This bubble chart shows the relationship between each subgroup's Performance Index results (horizontal axis) to the Value-Added letter grade (vertical axis). The size of the bubble represents the size of the student subgroup.



## Gap Closing



The Gap Closing component shows how well schools are meeting the performance expectations for our most vulnerable populations of students in English language arts, math and graduation.

COMPONENT GRADE

D

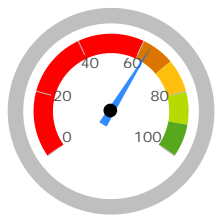
GRADE

D

### Annual Measurable Objectives

Annual Measurable Objectives (AMOs) compare the performance of student groups to a state goal which is displayed as the red line in the following charts. These charts show how well each group achieves that goal in reading, math and graduation – and emphasize any achievement gaps that exist between groups. The ultimate goal is for all groups to achieve at high levels.

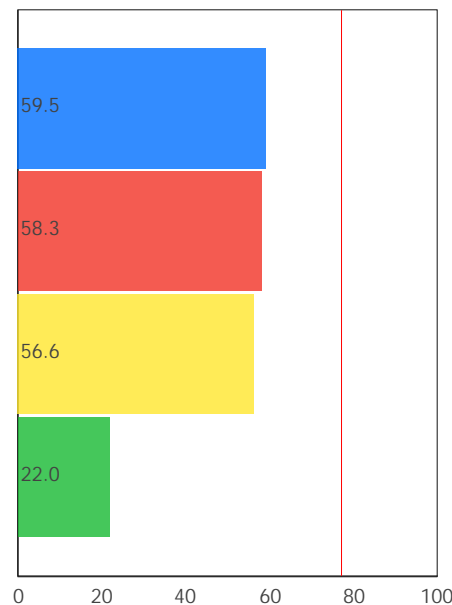
AMO Points



62.7%

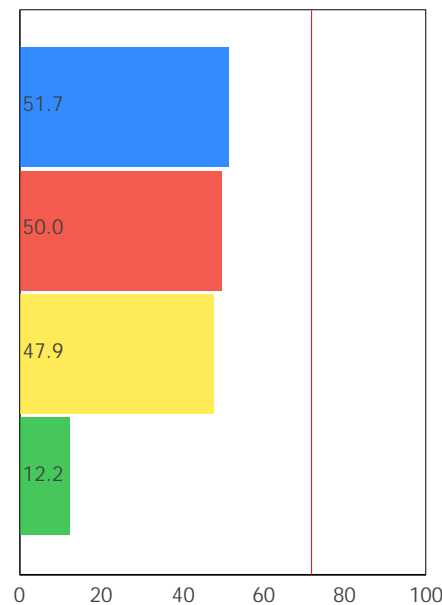
A = 90.0 - 100.0%  
B = 80.0 - 89.9%  
C = 70.0 - 79.9%  
D = 60.0 - 69.9%  
F = 0.0 - 59.9%

English Language Arts



All Students African American  
Econ Disadvantage Students w/ Disab...

Math



All Students African American  
Econ Disadvantage Students w/ Disab...

Graduation Rate

This school does not have an Annual Measurable Objective for Graduation Rate because there were not enough students to evaluate.

The red line on each graph identifies the Annual Measurable Objective. The 2017 AMO for ELA is 77.1%, for Math is 72%, and for Graduation Rate is 85.1%. Subgroups with fewer than 30 students are not rated and do not appear on the graphs.

## Graduation Rate



The Graduation Rate component looks at the percent of students who are successfully finishing high school with a diploma in four or five years.

COMPONENT GRADE

Not Rated

This school has not been assigned  
a grade for Graduation Rate  
because there were not enough  
students to evaluate.

The Graduation Rate graph that would appear in this space cannot be displayed because there were not enough students to evaluate.

## K-3 Literacy



The K-3 Literacy component looks at how successful the school is at getting struggling readers on track to proficiency in third grade and beyond.

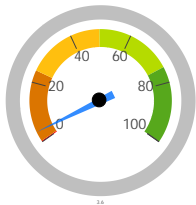
COMPONENT GRADE

D

GRADE

D

K-3 Literacy Improvement



3.6%

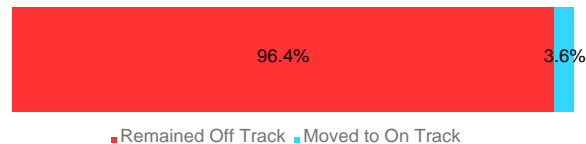
A = 74.7 - 100.0%  
B = 49.3 - 74.6%  
C = 23.9 - 49.2%  
D = -1.5 - 23.8%  
F = <= -1.6%

### In Your School...

12 Students Moved to On Track - 11 RIMP Deductions ÷ 28 Students Started Off Track

= 3.6%

RIMP = Reading Improvement and Monitoring Plan. Districts are required to create a RIMP for students not on track to be proficient in English Language Arts by the end of 3rd grade.



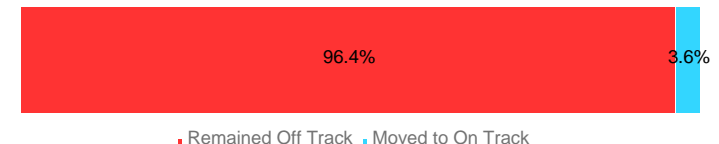
### Details of Measure

Year 1

Year 2

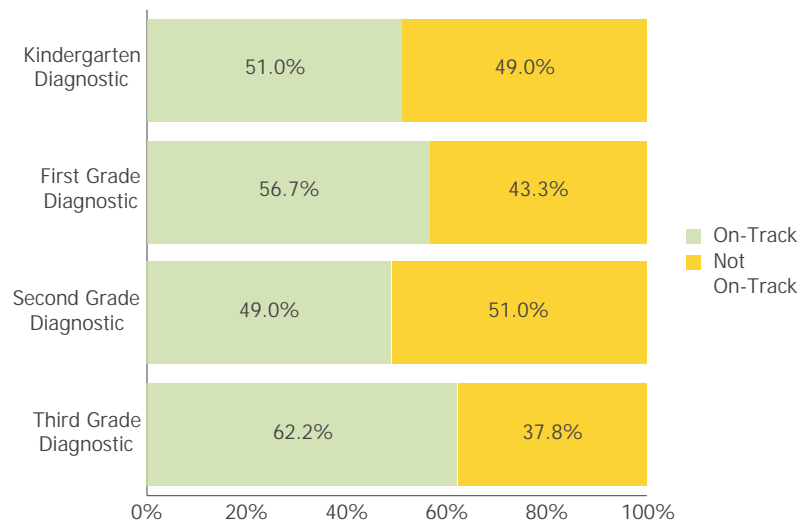
Year 3

Year 4



■ Remained Off Track ■ Moved to On Track

## Percentage On-Track in Reading Diagnostic



This chart shows the overall percentage of students that were on-track/not-on-track for each grade level reading diagnostic in 2016-2017.

## Third Grade Reading Guarantee

Ohio's Third Grade Reading Guarantee ensures that students are successful in reading before moving on to fourth grade. Schools must provide supports for struggling readers in early grades. If a child appears to be falling behind in reading, the school will immediately start a Reading Improvement and Monitoring Plan. The program ensures that every struggling reader gets the support he or she needs to learn and achieve.

Students have multiple opportunities to meet promotion requirements including meeting a minimum promotion score on the third grade state reading tests given in the fall and spring. Students have an additional opportunity to take the state assessment in the summer, as well as a district-determined alternative assessment.

The Parent Roadmap is available to help parents understand how the Third Grade Reading Guarantee applies to your child.

How many third graders met the Third Grade Reading Guarantee requirements for promotion to 4th grade? **96.8%**

How many third graders scored proficient on the state Reading test? **61.9%**

## Prepared for Success



Whether training in a technical field or preparing for work or college, the Prepared for Success component looks at how well prepared Ohio's students are for all future opportunities.

### COMPONENT GRADE

Not Rated

### COMPONENT GRADE

Not Rated

This data cannot be shown because there are not enough students in the graduating class of 2016 to evaluate.

### How Prepared were Your 2015 and 2016 Graduating Classes?

ACT: Participation

ACT: Remediation Free

SAT: Participation

SAT: Remediation Free

Honors Diploma

Industry-Recognized  
Credential

Advanced Placement:  
Participation

AP: Exam Score of 3 or  
Better

Dual Enrollment Credit

International  
Baccalaureate

IB: Exam Score of 4 or  
Better

This data cannot be shown because there are not enough students in the graduating class of 2016 to evaluate.

Note: These data represent students in the 4-year and 5-year graduation rates, i.e. students who entered 9th grade in 2012 and 2013.



### Outcomes after High School Graduation

Districts and schools have long-term impacts on student outcomes. The Prepared for Success component provides information on how schools prepare students for different pathways of college and career success. It also provides insights on how those students do once they leave high school. What happens beyond the diploma is an important indicator of how well schools are preparing students.

The University System of Ohio provides [district reports](#) on enrollment and remediation of high school graduates attending in-state, public colleges and universities.

What Percentage of the 2014 Graduating Class Entered College within Two Years?

NC

This graph is not displayed because the result is Not Calculated.

What Percentage of the 2010 Graduating Class Graduated from College within Six Years of Leaving High School?

NC

This graph is not displayed because the result is Not Calculated.

---

Note: These data represent students in the 4-year and 5-year graduation rates, i.e. students who entered 9th grade in 2012 and 2013.

Address: 200 Homewood Ave  
Dayton OH 45405-4328

Career Technical  
Planning District:

## Your School's Students

— —

	Enrollment #	Enrollment %
Am. Indian / Alaskan Native	NC	
Asian or Pacific Islander	NC	
Black, Non-Hispanic	784	95.1%
Hispanic	12	1.5%
Multiracial	NC	
White, Non-Hispanic	19	2.4%
Students with Disabilities	59	7.1%
Economically Disadvantaged	647	78.5%
Limited English Proficiency	NC	
Migrant	NC	

Reason	Percentage
To save time	95.1%
To save money	78.5%
To improve efficiency	7.1%
To increase productivity	2.4%
To reduce costs	1.5%

■ American Indian or Alaska...
 ■ Asian or Pacific Islander
 ■ Black, Non-Hispanic

■ Hispanic
 ■ Multiracial
 ■ White, Non-Hispanic

■ Students with Disabilities
 ■ Economic Disadvantage
 ■ Limited English Proficiency

■ Migrant

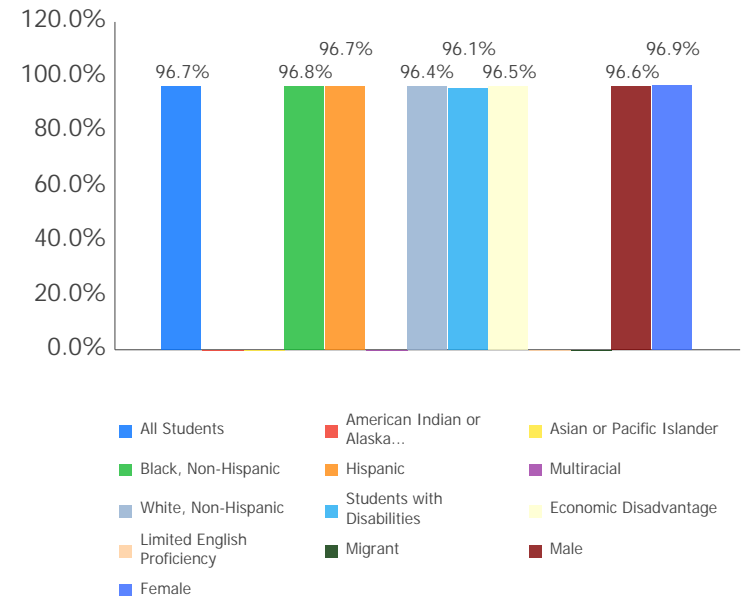
## Attendance Rate

Chronic  
Absenteeism  
Rate:

3.8%

All Students	96.7%
Am. Indian / Alaskan Native	NC
Asian or Pacific Islander	NC
Black, Non-Hispanic	96.8%
Hispanic	96.7%
Multiracial	NC
White, Non-Hispanic	96.4%
Students with Disabilities	96.1%
Economic Disadvantage	96.5%
Limited English Proficiency	NC
Migrant	NC
Male	96.6%
Female	96.9%

NC = Not Calculated because there are fewer than 10 in the group



Attendance Rate is not shown if enrollment is less than 10.

## Mobility Rates by Subgroup

	Student Mobility %
All Students	0.0%
Am. Indian / Alaskan Native	NC
Asian or Pacific Islander	NC
Black, Non-Hispanic	0.0%
Hispanic	0.0%
Multiracial	NC
White, Non-Hispanic	0.0%
Students with Disabilities	0.0%
Economically Disadvantaged	0.0%
Limited English Proficiency	NC
Migrant	NC

NC = Not Calculated because there are fewer than 10 in the group

A mobility rate chart cannot be displayed for this school because either there are not enough students to evaluate in any subgroup or all calculated results are 0.0%.

## Your School's Teachers

Your School's Poverty Status: Medium-High	Your School	Your District
Percentage of teachers with at least a Bachelor's Degree	97.8	--
Percentage of teachers with at least a Master's Degree	21.6	--
Percentage of core academic subject and elementary classes not taught by Highly Qualified Teachers	0	--
Percentage of core academic subject and elementary classes taught by properly certified teachers	100	--
Percentage of core academic subject elementary and secondary classes taught by teachers with temporary, conditional or long-term substitute certification/licensure	0	--
Lead or Senior Teachers:	0.0	0.0

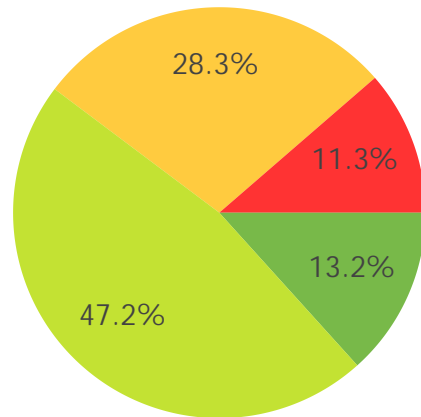
A district's high-poverty schools are those ranked in the top quartile based on the percentage of economically disadvantaged students. Low-poverty schools are those ranked in the bottom quartile based on the percentage of economically disadvantaged students. A district may have buildings in both quartiles, in just one quartile or in neither quartile.

NC = Not Calculated because there are fewer than 10 in the group

## Number of Teachers by Program Area

	#	State Avg per 1000 Students
General Education Teachers	43.5	46.8
Career-Technical Teachers	0.0	2.3
Special Education Teachers	0.0	10.9
Teacher Aides	0.0	7.3
Gifted Intervention Specialists	0.0	0.6
Fine Arts Teachers	0.5	3.0
Music Teachers	1.0	2.5
Physical Education Teachers	2.0	2.8
ELL Specialists	0.0	0.3

### Teacher Evaluations



■ Accomplished ■ Skilled ■ Developing  
■ Ineffective ■ Not Complete

### Wellness and Physical Education



## Financial Data



These measures answer several questions about spending and performance. How much is spent on Classroom instruction? How much, on average, is spent on each student? What is the source of the revenue? How do these measures compare to other districts and schools?

Comparison Group: Community Schools with Enrollment 500 or more

### Classroom Spending Data

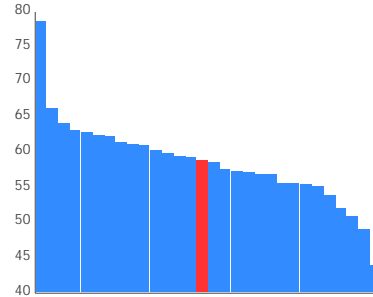
What percent of funds are spent on classroom instruction?

**58.9%**

How does this school rank in comparison to other schools of similar size?

**16 out of 31**

A rank of 1 indicates the highest percent spent on classroom instruction.

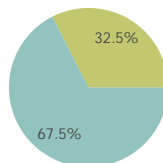
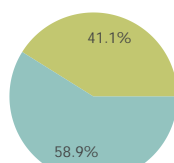
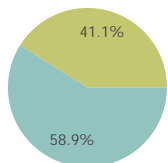


Rankings subject to change due to data appeals.

School

Comparison Group

State



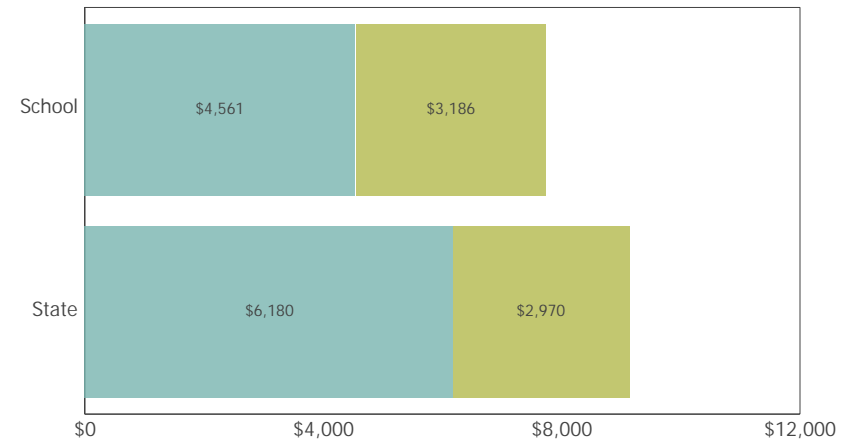
Classroom Instruction



Non-Classroom Instruction

### Spending per Pupil Data

	School	State
Operating Spending per Pupil	\$7,747	\$9,150
Classroom Instruction	\$4,561	\$6,180
Non-Classroom Spending	\$3,186	\$2,970



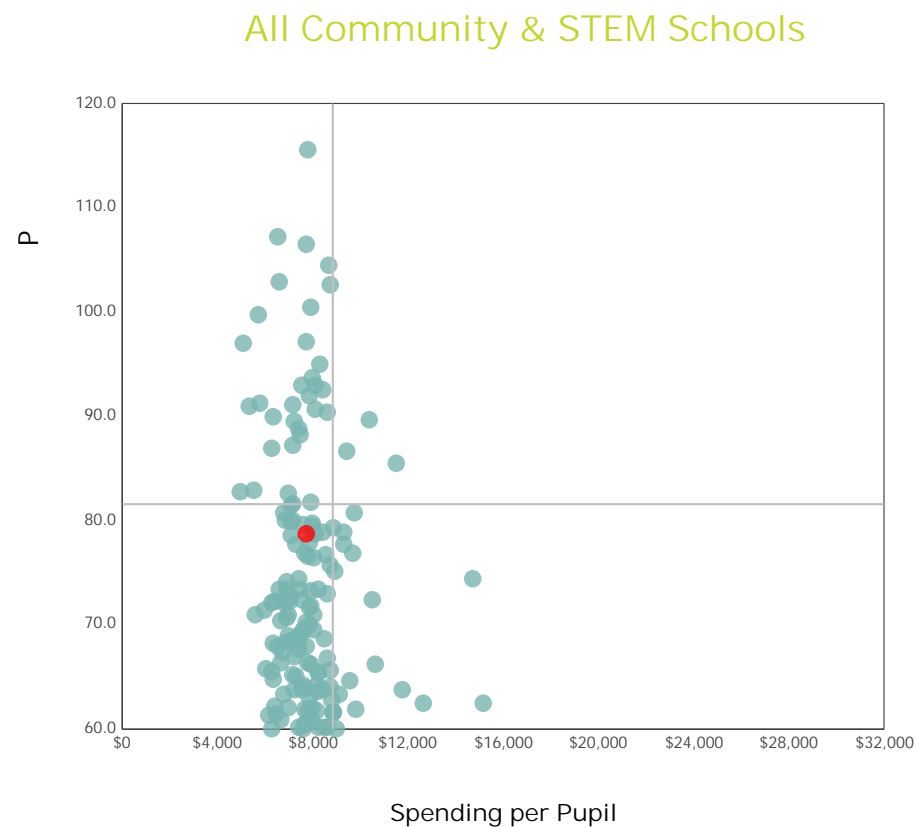
DECA PREP IS NOT among the 20% of traditional community schools with the lowest operating expenditures per pupil.



DECA PREP IS among the 20% of traditional community schools organizations with the highest academic performance index scores.

## Spending and Performance

This measure answers the question – what is the relationship of average spending per student to performance, and how does that compare to similar districts and schools?



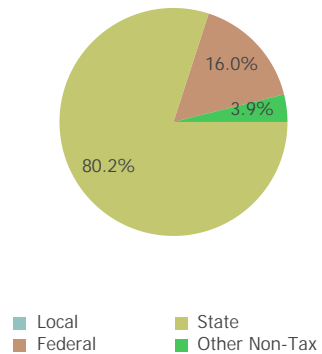
The quadrant lines on these graphs represent the statewide average performance index score and the statewide average spending per pupil for all Community and STEM schools.



## Source of Revenue

Source of Funds	School		State Total	
Local	\$0	0.0%	\$9,013,382,621	39.7%
State	\$6,995,501	80.2%	\$10,329,964,470	45.5%
Federal	\$1,392,241	16.0%	\$1,689,939,468	7.4%
Other Non-Tax	\$339,844	3.9%	\$1,662,319,384	7.3%
Total	\$8,727,586	100.0%	\$22,695,605,944	100.0%

School



State

