

# **PHOENIX**

## **Community Learning Center**



# **ANNUAL REPORT**

## **2015-2016**

## School Profile

### ***Geographic Boundaries;***

PCLC serves students in grade or age equivalent levels kindergarten through eighth, and, in accordance with Ohio Revised Code section 3314.03(A)(19), PCLC is able to enroll students statewide. The local student attendance area for PCLC is the Cincinnati Public School District. Students are also accepted from adjacent school districts. The school serves students in grades K-8, ages 5-14. The racial and ethnic balance of students is reflective of the community served.

SUBJECT	GRADE	NUMBER
Reading/Social Studies/Math/Science	K-4	10
Language/Arts/Social Studies	5-8	2
Math	5-8	2
Science	5-8	2
Special Education	K-8	2
Physical Education	5-8	1
Title I Intervention	K-8	1
TOTAL		20

## PCLC Performance Data

	Phoenix Community Learning Center - Rating	Phoenix Community Learning Center - calculation/ notes	
<b>Primary Academic Indicators</b>			
Performance Index (PI)	Falls Far Below	61.1	
Value Added (VA)	Meets	0.3	
Graduation Rate (4 Year)	NA		
Graduation Rate (5 Year)	NA		
K-3 Literacy Improvement	Does Not Meet	D	
Performance v. Local Market (PI)	Meets		
Performance v. Local Market (VA)	Exceeds		
Performance v. Statewide Charters (PI)	Exceeds		
Performance v. Statewide Charters (VA)	Does Not Meet		
Reading Progress*	NA		
Math Progress*	NA		

<b>Secondary Academic Indicators</b>			
Value Added: Overall	Does Not Meet	C	
Performance Index: Overall	Falls Far Below	D	
Value Added: Gifted	NR		
Value Added: Disabilities	Does Not Meet	C	
Value Added: Lowest 20%	Does Not Meet	C	
Value Added: High School	NA		
AMOs	Falls Far Below	F	
College Admission Participation Rate**	NA		
College Admission Non-remediation score**	NA		
Dual Enrollment Credits**	NA		
Industry Credentials**	NA		
Honors Diplomas Awarded**	NA		
AP Participation Rate**	NA		
AP Score of 3 or Better**	NA		
IB Participation Rate**	NA		
IB Score of 4 or Better**	NA		
Regularly Administers Internal Growth Assessment	Meets		
Met Majority of Internal Goals	Data Not Available		

### Financial Measures of Success (Current Year)

Ratio of Assets to Liabilities	Exceeds	1.2		
Days Cash	Exceeds	2.59		
Enrollment Variance	Exceeds	95%		

### Financial Measures of Success (Prior Years)

Multi-year Ratio of Assets to Liabilities	Exceeds	1.14 and 1.18		
Cash Flow	Meets	Negative & Positive		
		ATTM is 0.04, but trend does not meet standard, and TM is		
Total Margin and Aggregated Three-Year Total Margin	Does Not Meet	-0.04		

### Operations/Governance Primary Indicators

Records Compliance	Exceeds	97%		
On-Time Records Submission Rate	Does not meet	70%		
Financial Records Submitted Monthly	Exceeds	100%		
		FY 2014 and 2015. Two consecutive years of no findings, findings for recovery, noncompliance citations, questioned costs, or material weaknesses.		
Annual Audit	Exceeds			
LEA Special Education Performance Determination (most recent)	Meets	Needs Assistance, Year 1		

## Operations/Governance Secondary Indicators

Five-Year Forecasts Submitted by Deadline	Meets	Submitted 5/23/2016 and 10/20/2015		
Pre-opening Assurances Documentation	Meets	Completed 10 business days before the first day of school		
Annual Report	Does not meet	Submitted to parents and sponsor by 2/03/2016		
Safety Plan and Blueprint Submitted to OAG (last three years)	Meets	Updated 7/24/2015		
Family Survey Results	Meets	80% to 89% overall satisfaction with school, reported by school.		
*Applies to Dayton Leadership Academies - Early Learning Academy only				
**Applies to Sciotoville Community School only				

## PCLC Internal Goals

### School Goal - 80%

Grade	Subject	# of Students Tested	# of students at PCLC for 2 or More Years	% of students at PCLC for 2 or More Years Who Passed	Metric
3	Reading	55	19	89%	AIR Test
3	Math	55	19	84%	AIR Test
4	Math	42	17	70%	AIR Test
4	Reading	42	17	88%	AIR Test
4	Social Studies	42	17	88%	AIR Test
5	Reading	40	24	62%	AIR Test
5	Math	40	24	50%	AIR Test
5	Science	40	24	38%	AIR Test
6	Reading	35	24	86%	AIR Test
6	Math	35	24	100%	AIR Test
6	Social Studies	35	24	86%	AIR Test
7	Reading	33	24	35%	AIR Test
7	Math	33	24		AIR Test
8	Reading	28	24	63%	AIR Test
8	Math	28	24		AIR Test
8	Science	28	24	56%	AIR Test

## **Activities Toward Progress And Achievement Of School Goals**

### **Success Model: Data Driven Instruction & Inquiry**

Statement of Belief: PCLC educators believe that data-driven instruction and inquiry are the **most important factors** in helping each and every students achieve success.

**Data Driven Instruction and Inquiry (DDI)** will be used to provide a precise and systematic approach to improve student learning throughout the 2016-2017 school year. This inquiry cycle of data-driven instruction will include assessment, analysis, and action and will be a key framework for school-wide support of all student success.

From the PCLC superintendent, to school administrators, to teachers, all educators will be continuously asking:

- Where are we in terms of our goals?
- Where are our students in terms of their college and career readiness?
- How do we get there from here?

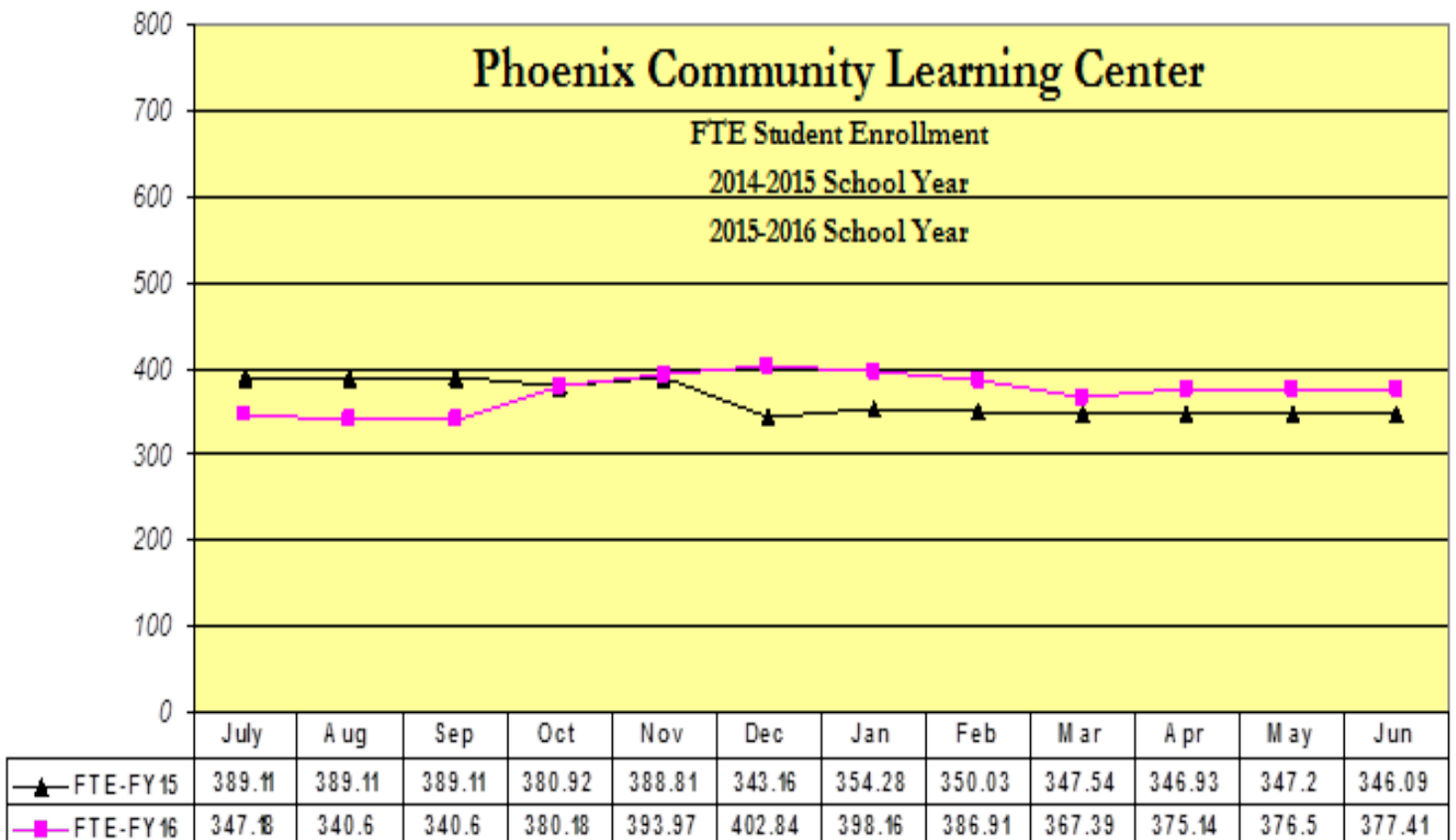
Interim assessments will show us what our students know and are able to do, and where the gaps are in student learning. To ensure that we're using the data from those interim assessments to close those gaps, principals/administrators will hold interim analysis meetings with individual teachers to analyze the students' data together and form a plan of action for the teachers to follow that differentiates instruction as needed per student to ensure student learning of needed skills.

This plan will be followed until the next interim assessment and analysis meeting. At this point, principals will conduct formal and informal teacher and student observations in the classroom to ensure the action plan is being followed over the weeks until the next interim assessment.

### **Interim Assessment Tool: edmentum**

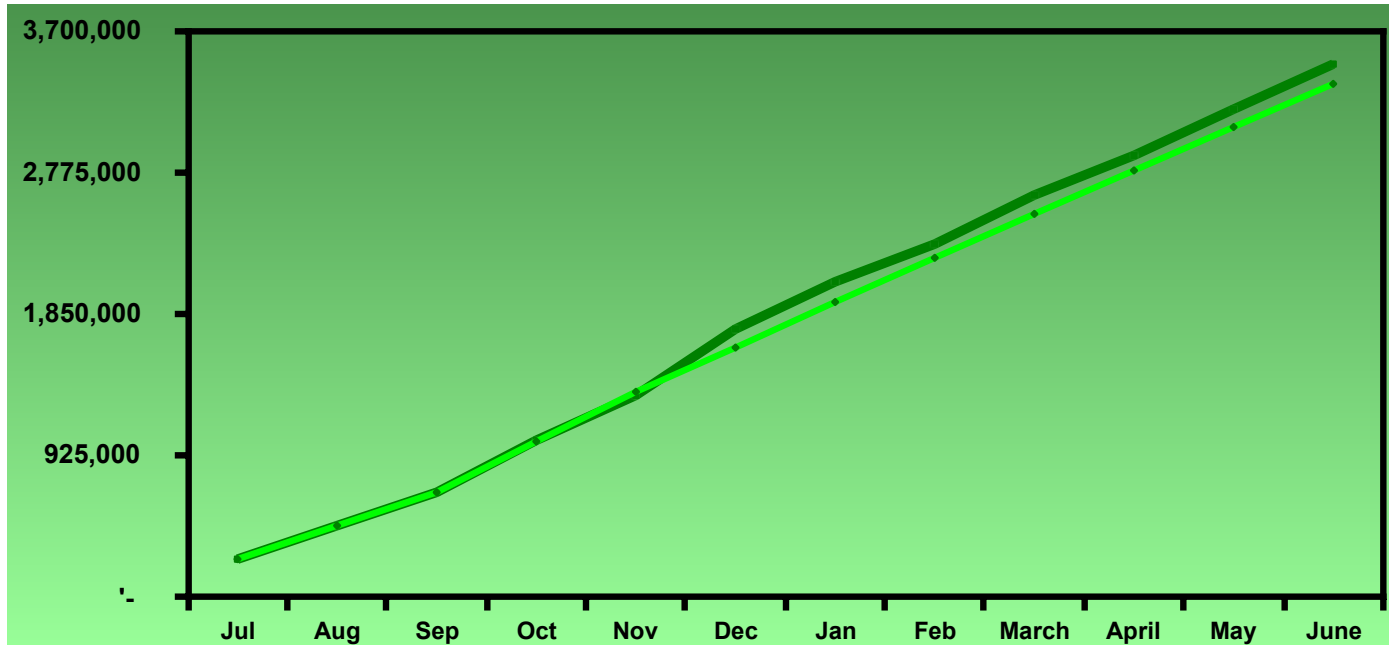
## **2015-2016 - FINANCIAL STATUS**

***FY16 Full Time Equivalent (FTE) student enrollment slightly ahead of FY15.***

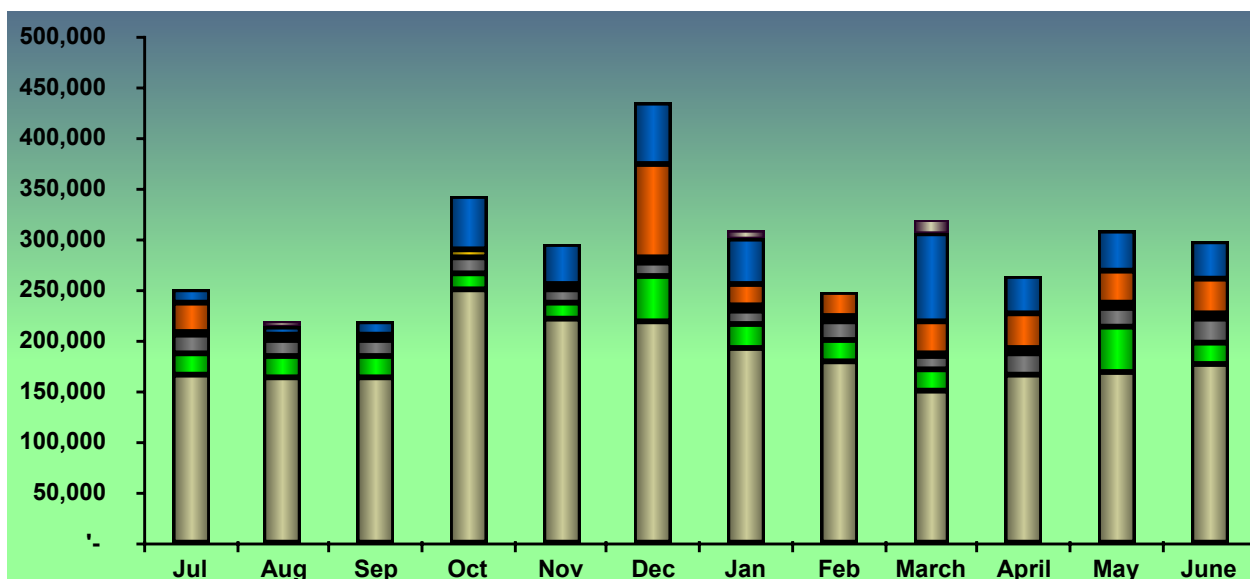




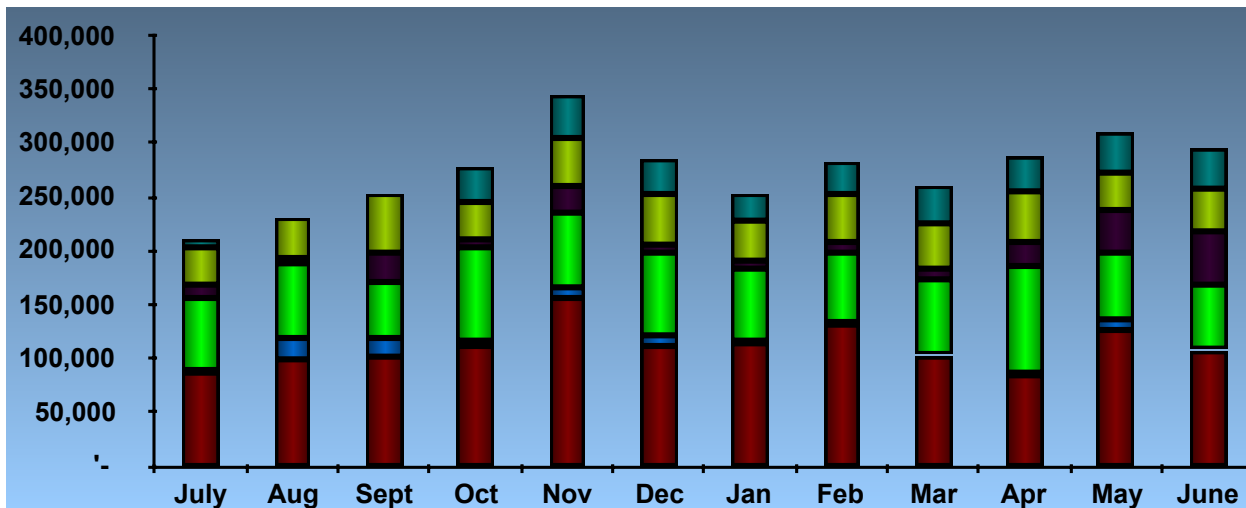
*Total Receipts for FY16 were \$128,866 higher than projected year-to-date.*



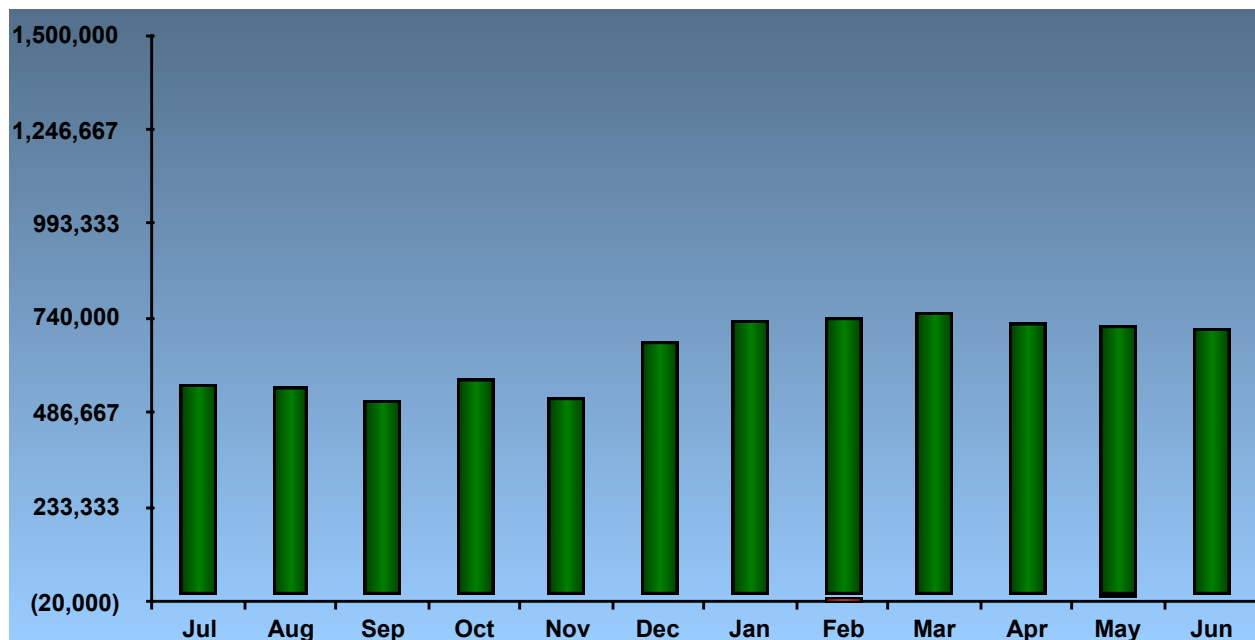
*Total receipts averaged \$290,076 per month.*



*Total disbursements averaged \$274,467 per*



*The unrestricted cash balance increased by approximately \$145,000 FY16.*



# ***PCLC Community Partners***

***2015-2016***

**PCLC acknowledges the following businesses, organizations, and individuals that generously gave their time, products, and services throughout the 2015- 2016 school year.**

- **Learning for Life**
- **Lenscrafter's Gift of Sight**
- **The Owens Group**
- **Cincinnati Police**
- **Young Women's Empowerment Program**
- **Boy's and Girl's Club**
  
- **Cincinnati Health Department Dental Program**
- **United Way**
- **Centerpoint Health**
- **Hamilton County Parks and Recreation**
- **Cincinnati Opera**
- **Donor's Choose**
- **Allen Temple Outreach**
- **Hamilton County Parks and Recreation**
- **Young Women's Empowerment Program**
- **Avondale Youth Council**
  
- **Cincinnati Herald**
- **Hamilton County Public Library**
- **Kahns**
- **Kohl Cares**
- **Larosas**
- **Little Caesars**
- **McDonalds**
- **Penn Station**
- **Positive Images**
- **Boy Scouts of America**

- **Cincinnati Children's Theatre**
- **Cincinnati Playhouse in the Park**
- **Girl Scouts of America**
- **Honey Hills Farms**
- **Avondale Youth Council**
- **Busken Bakery**
- **Chipotle**
- **Dominoes**
- **Kahns**
- **Kohl Cares**
  
- **UDF**
- **Whole Again**
- **Midwest Project**
- **University Of Cincinnati College of Engineering & Applied Science**
- **Art links**
- **Cincinnati Fire Dept.**
- **Papa Johns**
- **Frischs**
- **Avondale Branch Library**
- **The Gift Of Sight**
- **Dominos**
- **Smithfield Foods**
- **Taco Casa**
- **Toys For Tots**
- **Kings Island**
- **Remke Market**
- **MIC**

**SCHOOL CONTACT**

Glenda Brown, Superintendent

3595 Washington Avenue

Cincinnati, OH 45229

Email – brown.glendora@gmail.com

Phone – 513-351-5801

Fax – 513-351-5809

*PHOENIX Community Learning Center reported its activities and progress for the 2015-2016 school year to the sponsor and parents/guardians of all students enrolled, per ORC 3314.03 (A) (1) (g).*

