

2014 - 2015 Report Card for Columbus Collegiate Academy - West

SCHOOL GRADE

Coming in
2018

Teacher Evaluation data not available because implementation of Ohio Teacher Evaluation System not required for this district in 2014-2015 school year.



Achievement

This grade combines two results for students who took the state tests. The first result answers the question – How many students passed the state test? The second result answers the question – How well did students do on the state test?

Performance Index
70.3%..... C
Indicators Met
37.5%..... F

[2015 Modified Achievement Measure](#)

COMPONENT GRADE

Coming in
2016



Progress

This is your school's average progress for its students in math and reading, grades 4-8. It looks at how much each student learns in a year. Did the students get a year's worth of growth? Did they get more? Did they get less?

Value Added
Overall..... A
Gifted..... NR
Students with Disabilities..... A
Lowest 20% in Achievement..... A

COMPONENT GRADE

Coming in
2016



Gap Closing

This grade shows how well all students are doing in your district in reading, math, and graduation. It answers the question – Is every student succeeding, regardless of income, race, ethnicity, or disability?

Annual Measurable Objectives
50.0%..... F

[2015 AMO Download File](#)

COMPONENT GRADE

Coming in
2016



Graduation Rate

This grade answers the question – How many ninth graders graduate in four years or five years?

Graduation Rates
This school is not evaluated for graduation rate because there are not enough students in the graduating class.

COMPONENT GRADE

Coming in
2016



K-3 Literacy

This grade answers the question – Are more students learning to read in kindergarten through third grade?

K-3 Literacy Improvement
NC..... NR

COMPONENT GRADE

Coming in
2016



Prepared for Success

This grade answers the question – Are students who graduate from your district ready for college or a career? There are many ways to show that graduates are prepared.

COMPONENT GRADE

Coming in
2016

Achievement



This grade combines two results for students who took the state tests. The first result answers the question – How many students passed the state test? The second result answers the question – How well did students do on the state test?

COMPONENT GRADE

Coming in
2016

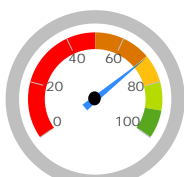
GRADE

C

Performance Index

The Performance Index measures the test results of every student, not just those who score proficient or higher. There are six levels on the index and districts receive points for every student in each of these levels. The higher the achievement level the more the points awarded in the district's index. This rewards schools and districts for improving the performance of all students, regardless of achievement level.

Performance Index

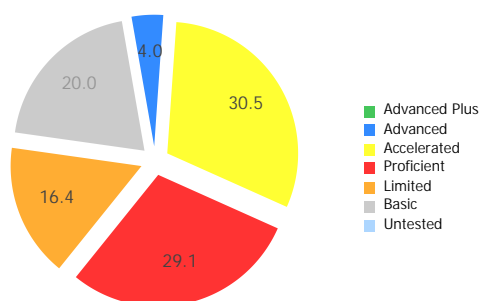


70.3%

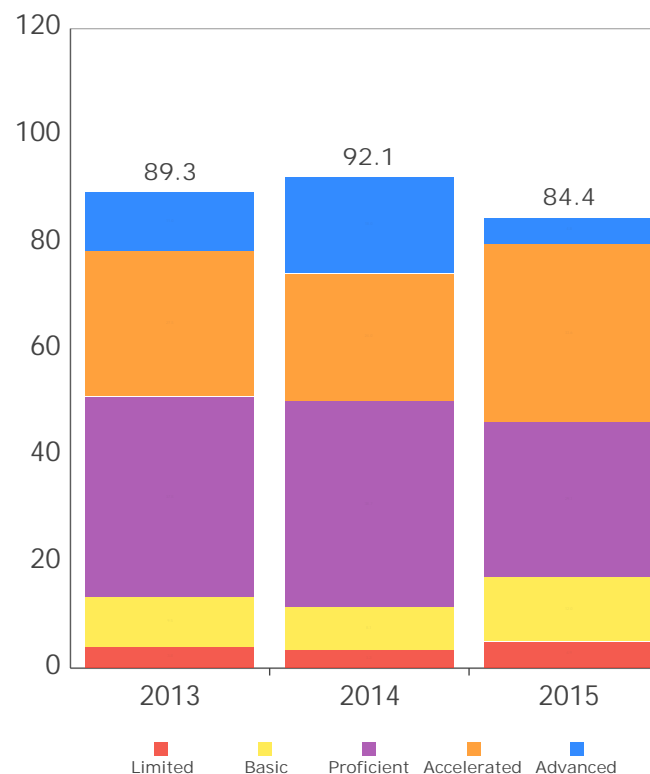
84.4 of a possible 120.0

A = 90.0 - 100.0%
B = 80.0 - 89.9%
C = 70.0 - 79.9%
D = 50.0 - 69.9%
F = 0.0 - 49.9%

Achievement Level	Pct of Students		Points for this Level		Points Received
Advanced Plus	0.0	x	1.3	=	0.0
Advanced	4.0	x	1.2	=	4.8
Accelerated	30.5	x	1.1	=	33.6
Proficient	29.1	x	1.0	=	29.1
Basic	20.0	x	0.6	=	12.0
Limited	16.4	x	0.3	=	4.9
Untested	0.0	x	0.0	=	0.0
				=	84.4



Performance Index Trend



GRADE

F

Indicators Met

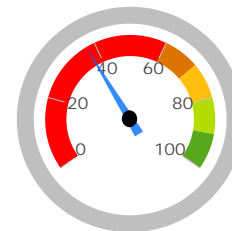
Indicators Met measures the percent of students who have passed state tests. It also includes the gifted indicator. Test results are reported for each student in a grade and subject.

Indicators Met %

37.5%

3 out of 8

A = 90.0 - 100.0%
B = 80.0 - 89.9%
C = 70.0 - 79.9%
D = 50.0 - 69.9%
F = 0.0 - 49.9%



Grades 3-5

This school does not have enough test results in 3rd, 4th, or 5th grade to display this table.

Grades 6-8

6th Grade	Mathematics	63.3%	✗
	Reading	63.4%	✗
	Social Studies	37.3%	✗
7th Grade	Mathematics	63.2%	✗
	Reading	65.5%	✗
8th Grade	Mathematics	78.7%	✓
	Reading	85.1%	✓
	Science	72.9%	✓

Ohio Graduation Test

This school does not have enough Ohio Graduation Test results to display this table.

GIFTED INDICATOR NC

Achievement Levels by Grade

3rd Grade

No data returned for this view. This might be because the applied filter excludes all data.

4th Grade

No data returned for this view. This might be because the applied filter excludes all data.

5th Grade

No data returned for this view. This might be because the applied filter excludes all data.

6th Grade

Proficient Percent Trend by Grade

3rd Grade

No data returned for this view. This might be because the applied filter excludes all data.

4th Grade

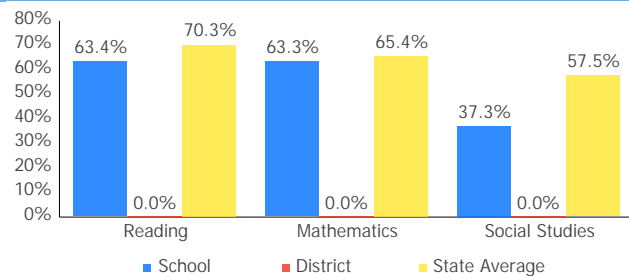
No data returned for this view. This might be because the applied filter excludes all data.

5th Grade

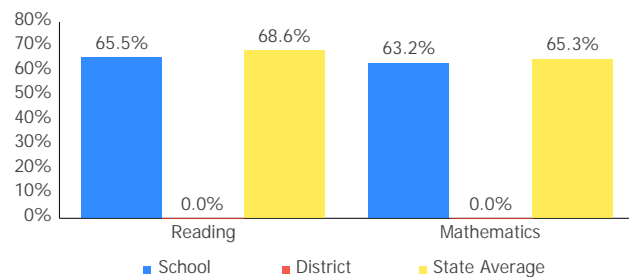
No data returned for this view. This might be because the applied filter excludes all data.

6th Grade

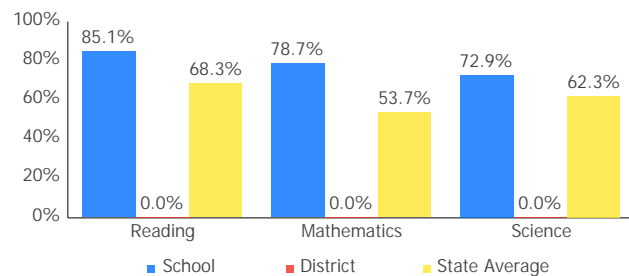
2014 - 2015 Report Card for Columbus Collegiate Academy - West



7th Grade

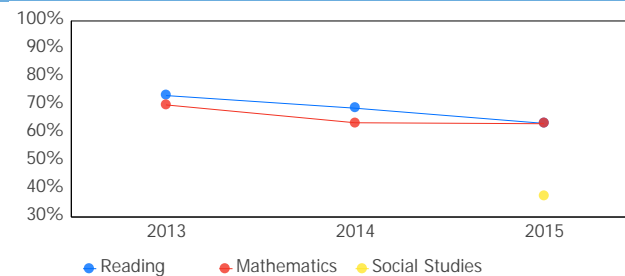


8th Grade

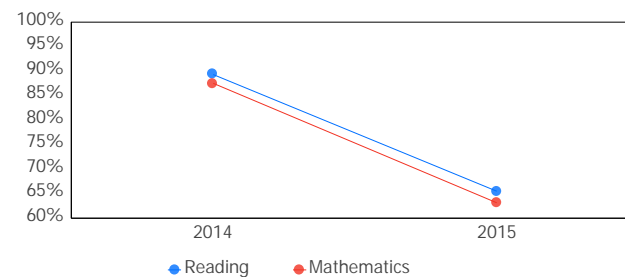


10th Grade OGT

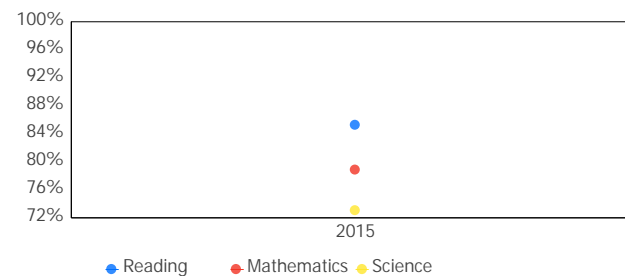
No data returned for this view. This might be because the applied filter excludes all data.



7th Grade



8th Grade



10th Grade OGT

No data returned for this view. This might be because the applied filter excludes all data.

11th Grade Cumulative OGT

No data returned for this view. This might be because the applied filter excludes all data.

11th Grade Cumulative OGT

No data returned for this view. This might be because the applied filter excludes all data.

Gifted Students



The Gifted Students data and Indicator highlight the opportunities for and performance of gifted students. The dashboard answers several questions: How many students are identified as gifted and in what categories? How many of those students are receiving gifted services? How well are those gifted students performing? The Gifted Indicator measures whether opportunity and performance expectations are being met for gifted students.

INDICATOR

NC

Overview

The Gifted Indicator is derived from three components: Gifted Value Added grade, the Performance Index for gifted students, and a Gifted Inputs score.

Gifted Value Added

Value Added Grade: NR
Value Added Met?: NC

Schools must earn a Gifted Value Added grade of C or better to meet the Gifted Value Added component.

Gifted Performance Index

Performance Index: 0.000
Performance Index Met?: NC

Schools with at least 10 unique students in the Gifted Performance Index calculation must score 115.0 or better to meet the Gifted Performance Index component.

Gifted Inputs

Total Points: 0.0
Gifted Inputs Met?: Not Met

Points are earned based on identification and services provided to gifted students. Schools must earn 40 or more points out of a possible 100 to meet the Gifted Inputs component.

Gifted Indicator Final Result

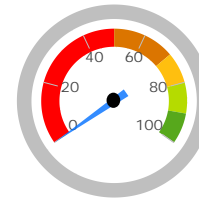
INDICATOR

NC

The Gifted Indicator is Met if none of the three components are Not Met. Gifted Inputs alone cannot determine the Gifted Indicator, however; if both the Value Added and Performance Index components are NC, then the Gifted Indicator is also NC.

Performance Index

The Performance Index calculation for gifted students. Only tests taken by students identified as gifted in that subject (e.g. gifted in Math and taking the Math test), or taken by students identified with Super Cognitive abilities regardless of test subject are included.



0.0%

0.000 of a possible 120.0

A = 90.0 - 100.0%
B = 80.0 - 89.9%
C = 70.0 - 79.9%
D = 50.0 - 69.9%
F = 0.0 - 49.9%

Achievement Level	Pct of Students		Points for this Level		Points Received
Advanced Plus	0.0	x	1.3	=	0.0
Advanced	0.0	x	1.2	=	0.0
Accelerated	0.0	x	1.1	=	0.0
Proficient	0.0	x	1.0	=	0.0
Basic	0.0	x	0.6	=	0.0
Limited	0.0	x	0.3	=	0.0
Untested	0.0	x	0.0	=	0.0
					0.000

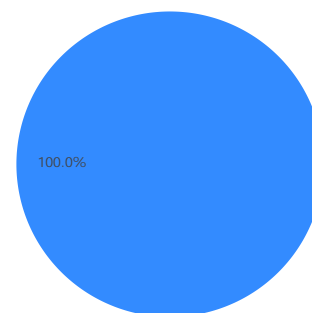
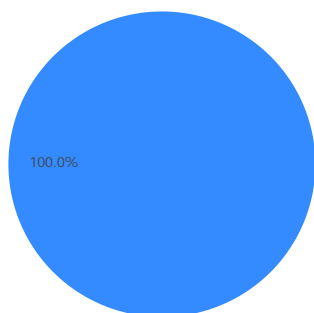
■ Advanced Plus
■ Advanced
■ Accelerated
■ Proficient
■ Limited
■ Basic
■ Untested

Gifted Indicator

The Gifted Inputs calculation assigns points based on the percentage of students identified and served in eight categories (factors). The points earned for each category are totaled to determine the final Met/Not Met determination for the Gifted Input component.

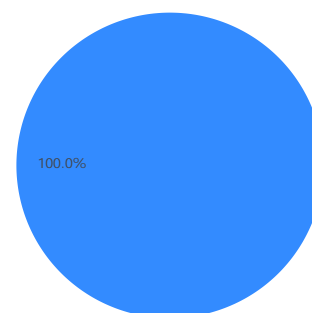
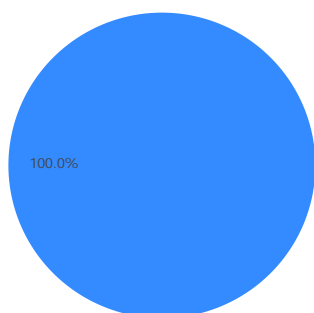
Reading, Math, Science, Social Studies, and Superior Cognitive Abilities

Visual/Performing Arts and Creative Thinking



Disadvantaged Students

Minority Students



Receiving Gifted Services



Identified as Gifted, but
not receiving services



Not Identified as Gifted

Progress



This is your school's average progress for its students in math and reading, grades 4-8. It looks at how much each student learns in a year. It answers the question – Did the students get a year's worth of growth? Did they get more? Did they get less?

COMPONENT GRADE

Coming in
2016

GRADE

A

Overall

This measures the progress for all students in math and reading, grades 4-8.

GRADE

NR

Gifted Students

This measures the progress for students identified as gifted in reading, math, and/or superior cognitive ability.

GRADE

A

Students in the Lowest 20% in Achievement

This measures the progress for students identified as the lowest 20% statewide in reading and math achievement.

GRADE

A

Students with Disabilities

This measures the progress for students with disabilities.

GRADE

Coming
in 2018

High School

A High School measure of progress will be reported in the 2014-15 school year.

GRADE

A

High Mobility

For districts and schools with a mobility rate of 25% or higher, this measures the progress of a subset of students that have been in the district for at least two years. This measure will not be included in the Progress component grade.

Progress Details

This table shows the Progress scores by test grade and subject, and includes up to three years of data as available.

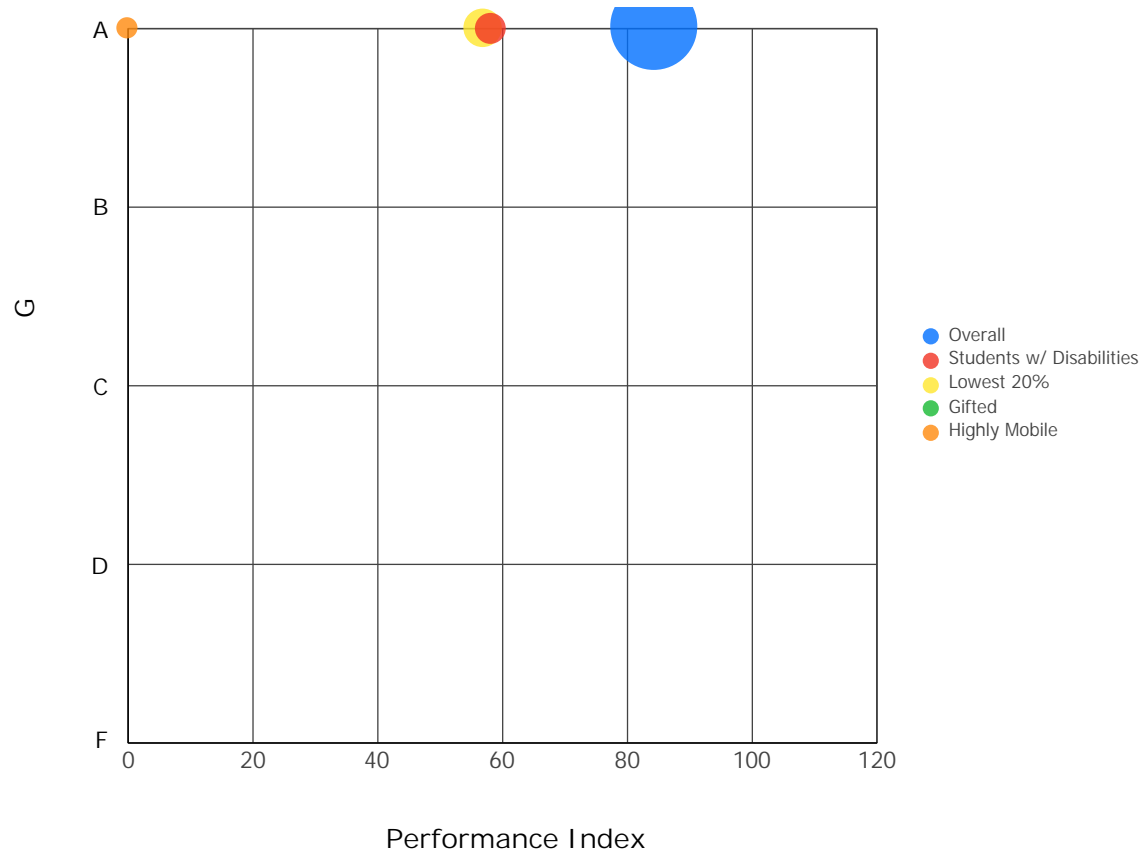
Test Grade	Progress Score		
	English Language Arts	Mathematics	All Tests
All Grades	6.65	6.76	8.79
6th Grade	4.37	7.75	7.65
7th Grade	3.27	2.20	3.66
8th Grade	3.87	0.66	3.16

Although Progress scores are not assigned letter grades at this level of detail, the grading scale applied at the Overall (All Students, All Tests) level is:

A = 2.00 and up
B = 1.00 to 1.99
C = -1.00 to 0.99
D = -2.00 to -1.01
F = below -2.00

Progress vs. Performance Index

This bubble chart shows the relationship between each subgroup's Performance Index results (horizontal axis) to the Value-Added letter grade (vertical axis). The size of the bubble represents the size of the student subgroup.



Gap Closing



This grade shows how well all students are doing in your district in reading, math, and graduation. It answers the question – Is every student succeeding, regardless of income, race, ethnicity, or disability?

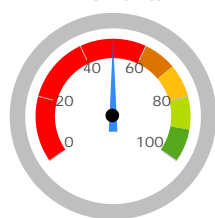
COMPONENT GRADE

Coming in
2016

GRADE

F

AMO Points



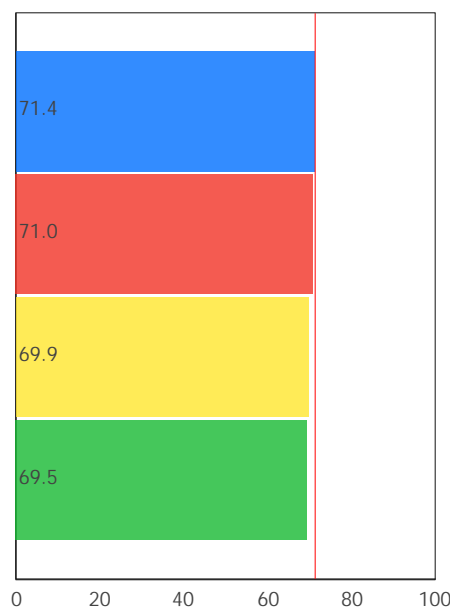
50.0%

A = 90.0 - 100.0%
B = 80.0 - 89.9%
C = 70.0 - 79.9%
D = 60.0 - 69.9%
F = 0.0 - 59.9%

Annual Measurable Objectives

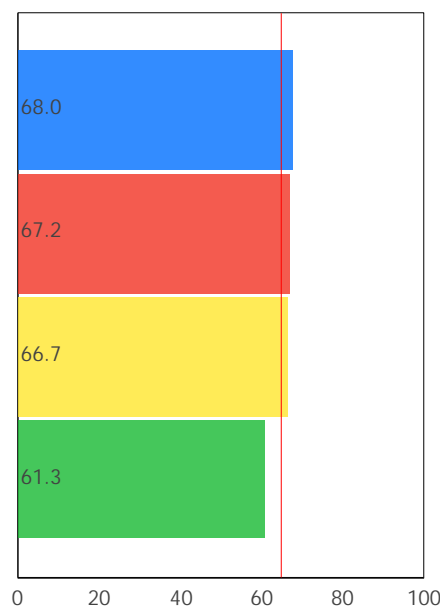
Annual Measurable Objectives (AMOs) compare the performance of student groups to a state goal which is displayed as the red line in the following charts. These charts show how well each group achieves that goal in reading, math and graduation – and emphasize any achievement gaps that exist between groups. The ultimate goal is for all groups to achieve at high levels.

Reading



African American White
Econ Disadvantage All Students

Math



Econ Disadvantage All Students
White African American

Graduation Rate

This school does not have an Annual Measurable Objective for Graduation Rate because there were not enough students to evaluate.

The red line on each graph identifies the Annual Measurable Objective. The 2015 AMO for Reading is 71.3%, for Math is 65.0%, and for Graduation Rate is 80.5%. Subgroups with fewer than 30 students are not rated and do not appear on the graphs.

Graduation Rate



This grade represents the percentage of students whom entered the 9th grade and graduated 4 and 5 years later.

COMPONENT GRADE

Coming in
2016

This school has not been assigned
a grade for Graduation Rate
because there were not enough
students to evaluate.

The Graduation Rate graph that would appear in this space cannot be displayed because there were not enough students to evaluate.

K-3 Literacy



This grade answers the question - Are more students learning to read in kindergarten through third grade?

COMPONENT GRADE

Coming in
2016

GRADE

NR

K-3 Literacy
Improvement

This data is not displayed because there are not enough students to evaluate.

In Your School...

K-3 Literacy was not calculated for this school because there were not enough students to evaluate.

Details of Measure

Not On-Track at Point A			Improving to On-Track at Point B	
Kindergarten Reading Diagnostic, School Year 2013 - 2014	< 10	to	1st Grade Reading Diagnostic, School Year 2014 - 2015	< 10
1st Grade Reading Diagnostic, School Year 2013 - 2014	< 10	to	2nd Grade Reading Diagnostic, School Year 2014 - 2015	< 10
2nd Grade Reading Diagnostic, School Year 2013 - 2014	< 10	to	3rd Grade Reading Diagnostic, School Year 2014 - 2015	< 10
3rd Grade Reading Diagnostic, School Year 2014 - 2015	< 10	to	3rd Grade Reading OAA, School Year 2014 - 2015	< 10
Deduction for 3rd graders who did not pass OAA and were not on a Reading Improvement and Monitoring Plan				< 10
Totals				< 10

Percentage On-Track in Reading Diagnostic

K-3 Literacy was not calculated for this school because there were not enough students to evaluate.

Third Grade Reading Guarantee

Ohio's Third Grade Reading Guarantee ensures that students are successful in reading before moving on to fourth grade. Schools must provide supports for struggling readers in early grades. If a child appears to be falling behind in reading, the school will immediately start a Reading Improvement and Monitoring Plan. The program ensures that every struggling reader gets the support he or she needs to learn and achieve.

Students have multiple opportunities to meet promotion requirements including meeting a minimum promotion score on the third grade state reading tests given in the fall and spring. Students have an additional opportunity to take the state assessment in the summer, as well as a district-determined alternative assessment.

The Parent Roadmap is available to help parents understand how the Third Grade Reading Guarantee applies to your child.

How many third graders met the Third Grade Reading Guarantee requirements for promotion to 4th grade?

NC

How many third graders scored proficient on the state Reading test?

Prepared for Success



This grade answers the question – Are students who graduate from your school ready for college or a career? There are many ways to show that graduates are prepared.

COMPONENT GRADE

Coming in
2016

How Prepared was Your 2014 Graduating Class?

ACT: Participation

ACT: Remediation
Free

SAT: Participation

SAT: Remediation
Free

Honors Diploma

Industry-Recognized
Credential

Advanced Placement:
Participation

AP: Exam Score of 3
or Better

Dual Enrollment
Credit

International
Baccalaureate

IB: Exam Score of 4
or Better

This data cannot be shown because there are not enough students in the graduating class of 2014 to evaluate.

Outcomes after High School Graduation

Districts and schools have long-term impacts on student outcomes. The Prepared for Success component provides information on how schools prepare students for different pathways of college and career success. It also provides insights on how those students do once they leave high school. What happens beyond the diploma is an important indicator of how well schools are preparing students.

The University System of Ohio provides [district reports](#) on enrollment and remediation of high school graduates attending in-state, public colleges and universities.

What Percentage of the 2012 Graduating
Class Entered College within Two Years?

NC

This graph is not
displayed because the
result is Not Calculated.

Note: These data represent students in the 4-year graduation rate, i.e. students who entered 9th grade in 2011.

2014 - 2015 Report Card for Columbus Collegiate Academy - West



Principal: Kathryn T. Anstaett
Address: 300 Dana Ave
Columbus OH 43223-1310

Phone: (614) 545-9570
Career Technical
Planning District: Columbus City CTPD

Directory information current as of the 2014-2015 Report Card publication date.

Your School's Students

Average
Daily
Enrollment:

220

Number of
Limited English
Proficiency
Students
Excluded from
Accountability
Calculations:

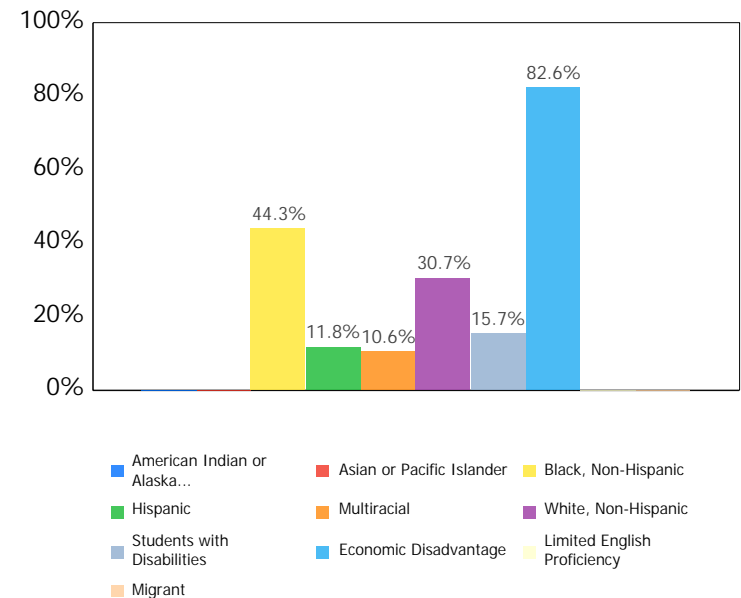
--

Enrollment by Subgroup

	Enrollment #	Enrollment %
Am. Indian / Alaskan Native	NC	
Asian or Pacific Islander	NC	
Black, Non-Hispanic	98	44.3%
Hispanic	26	11.8%
Multiracial	23	10.6%
White, Non-Hispanic	68	30.7%
Students with Disabilities	35	15.7%
Economically Disadvantaged	182	82.6%
Limited English Proficiency	NC	
Migrant	NC	

NC = Not Calculated because there are fewer than 10 in the group

State and federal law require an annual assessment of Limited English Proficient (LEP) students to measure their English language proficiency. The Ohio Test of English Language Acquisition (OTELA) is the assessment used in Ohio to gauge LEP students' growth in learning English. For information about your district's OTELA results, see the Department of Education's web site at <http://education.ohio.gov>.



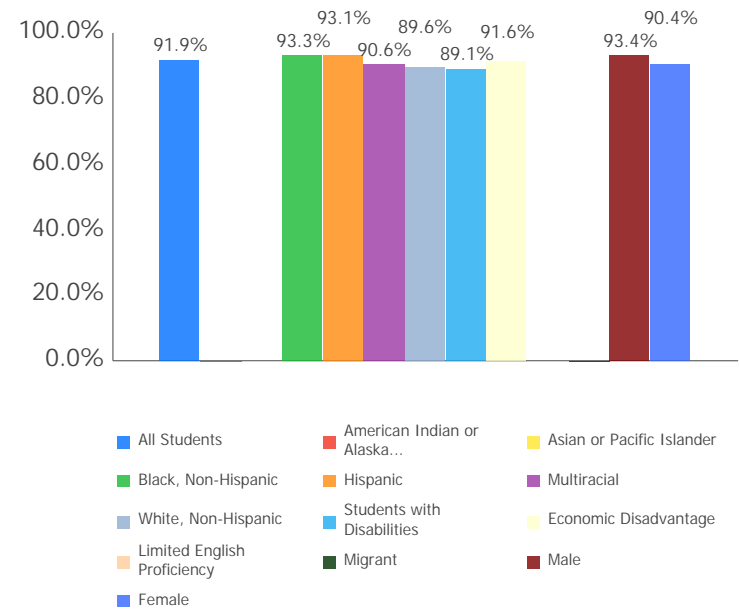
Attendance Rate

Chronic
Absenteeism
Rate:

23.8%

All Students	91.9%
Am. Indian / Alaskan Native	NC
Asian or Pacific Islander	NC
Black, Non-Hispanic	93.3%
Hispanic	93.1%
Multiracial	90.6%
White, Non-Hispanic	89.6%
Students with Disabilities	89.1%
Economic Disadvantage	91.6%
Limited English Proficiency	NC
Migrant	NC
Male	93.4%
Female	90.4%

NC = Not Calculated because there are fewer than 10 in the group



Attendance Rate is not shown if enrollment is less than 10.

Mobility Rates by Subgroup

	Student Mobility %
All Students	0.0%
Am. Indian / Alaskan Native	NC
Asian or Pacific Islander	NC
Black, Non-Hispanic	0.0%
Hispanic	0.0%
Multiracial	0.0%
White, Non-Hispanic	0.0%
Students with Disabilities	0.0%
Economically Disadvantaged	0.0%
Limited English Proficiency	NC
Migrant	NC

NC = Not Calculated because there are fewer than 10 in the group

A mobility rate chart cannot be displayed for this school because either there are not enough students to evaluate in any subgroup or all calculated results are 0.0%.

Your School's Teachers

Your School's Poverty Status: High	Your School	Your District
Percentage of teachers with at least a Bachelor's Degree	100.0	--
Percentage of teachers with at least a Master's Degree	0.0	--
Percentage of core academic subject and elementary classes not taught by Highly Qualified Teachers	0	--
Percentage of core academic subject and elementary classes taught by properly certified teachers	100	--
Percentage of core academic subject elementary and secondary classes taught by teachers with temporary, conditional or long-term substitute certification/licensure	0	--
Lead or Senior Teachers:	0.0	0.0

A district's high-poverty schools are those ranked in the top quartile based on the percentage of economically disadvantaged students. Low-poverty schools are those ranked in the bottom quartile based on the percentage of economically disadvantaged students. A district may have buildings in both quartiles, in just one quartile or in neither quartile.

NC = Not Calculated because there are fewer than 10 in the group

Number of Teachers by Program Area

General Education	12.0
Gifted and Talented	0.0
Career-Technical Programs	0.0
Art Education K-8	0.0
Music Education K-8	0.0
Physical Education K-8	0.0
ELL Instructional Program	0.0
Special Education	0.0

Teacher Evaluations

■ Skilled ■ Accomplished ■ Developing
■ Ineffective ■ Not Complete

Wellness and Physical Education

The extent to which students are successful in meeting the benchmarks contained in Ohio's physical education standards

Less than 10 students to evaluate

Financial Data



These measures answer several questions about spending and performance. How much is spent on Classroom instruction? How much, on average, is spent on each student? What is the source of the revenue? How do these measures compare to other districts and schools?

Comparison Group: Community Schools with Enrollment between 150 and 499

Classroom Spending Data

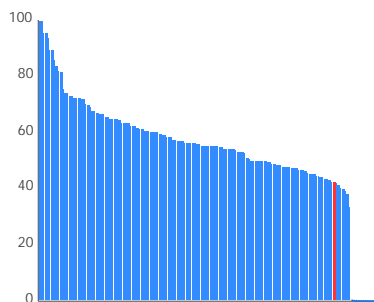
What percent of funds are spent on classroom instruction?

42.5%

How does this school rank in comparison to other schools of similar size?

159 out of 187

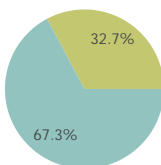
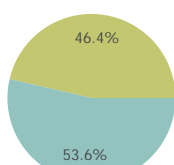
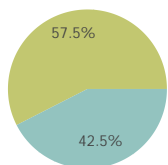
A rank of 1 indicates the highest percent spent on classroom instruction.



School

Comparison Group

State



Classroom Instruction



Non-Classroom Instruction

Spending per Pupil Data

	School	State
Operating Spending per Pupil	\$7,199	\$9,228
Classroom Instruction	\$3,062	\$6,211
Non-Classroom Spending	\$4,137	\$3,016



Columbus Collegiate Academy - West IS NOT among the 20% of traditional community schools with the lowest operating expenditures per pupil.

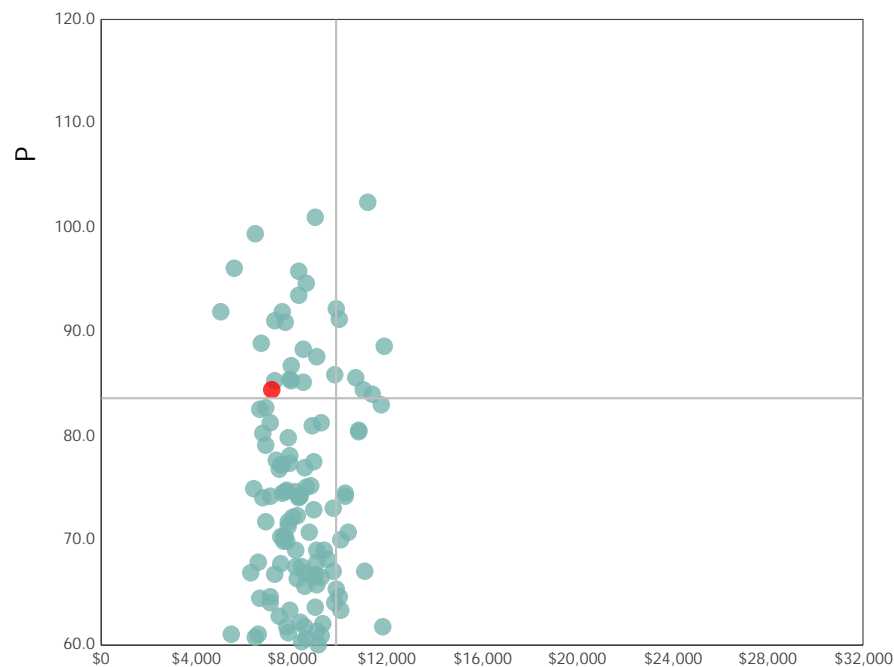


Columbus Collegiate Academy - West IS among the 20% of traditional community schools organizations with the highest academic performance index scores.

Spending and Performance

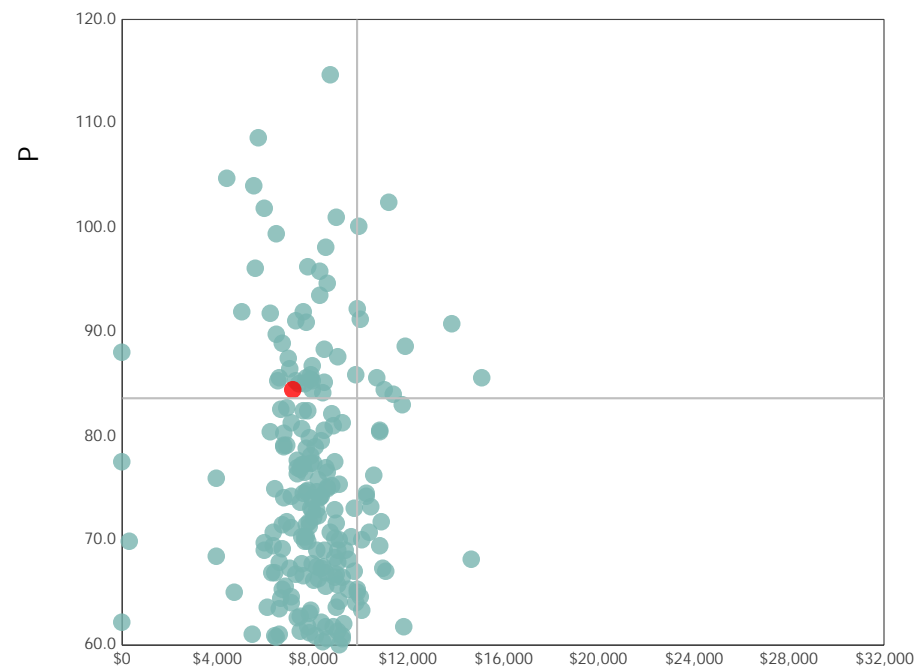
This measure answers the question – what is the relationship of average spending per student to performance, and how does that compare to similar districts and schools?

Comparison Group



Spending per Pupil

All Community & STEM Schools



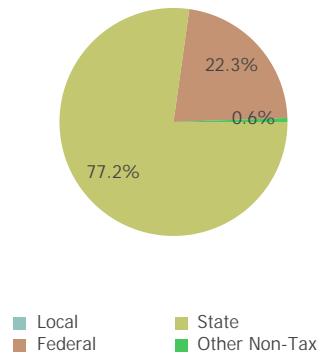
Spending per Pupil

The quadrant lines on these graphs represent the statewide average performance index score and the statewide average spending per pupil for all Community and STEM schools.

Source of Revenue

Source of Funds	School		State Total	
Local	\$0	0.0%	\$8,465,909,321	39.4%
State	\$1,646,773	77.2%	\$9,920,347,064	46.1%
Federal	\$475,124	22.3%	\$1,617,676,379	7.5%
Other Non-Tax	\$12,174	0.6%	\$1,492,334,587	6.9%
Total	\$2,134,070	100.0%	\$21,496,267,351	100.0%

School



State

