

Chart 1A: 5th Grade Science versus Reading Proficiency Rates – Ohio Schools, 2013-14

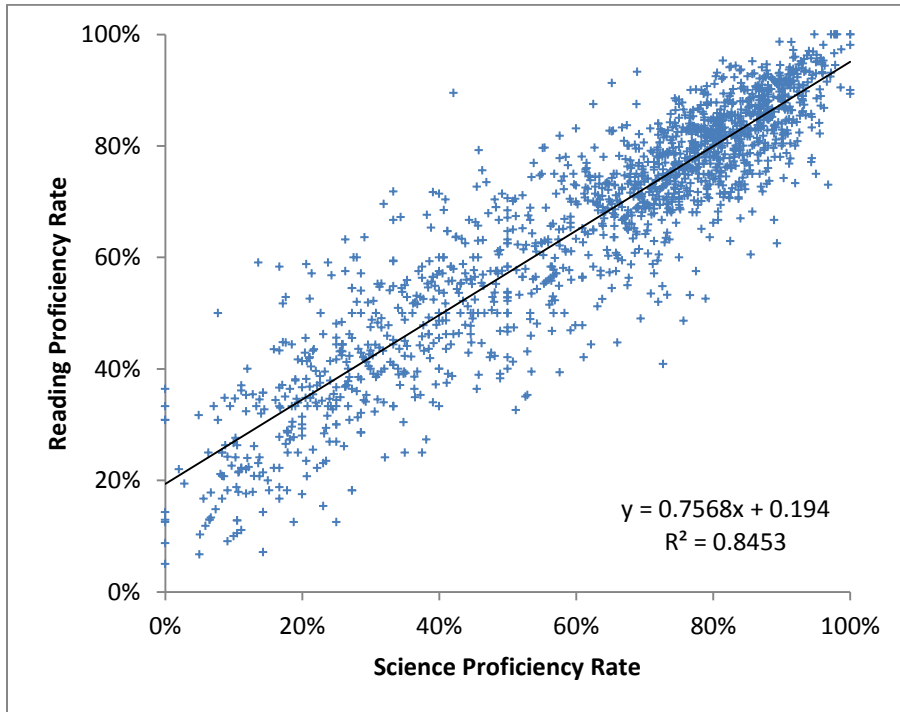


Chart 1B: 5th Grade Science versus Math Proficiency Rates – Ohio Schools, 2013-14

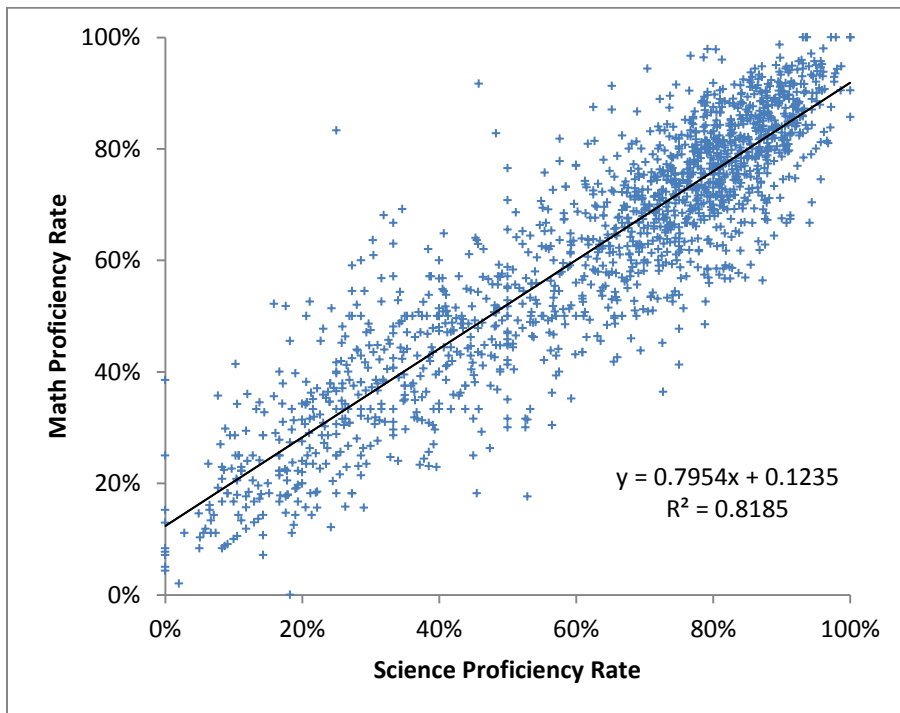


Chart 2A: 8th Grade Science versus Reading Proficiency Rates – Ohio Schools, 2013-14

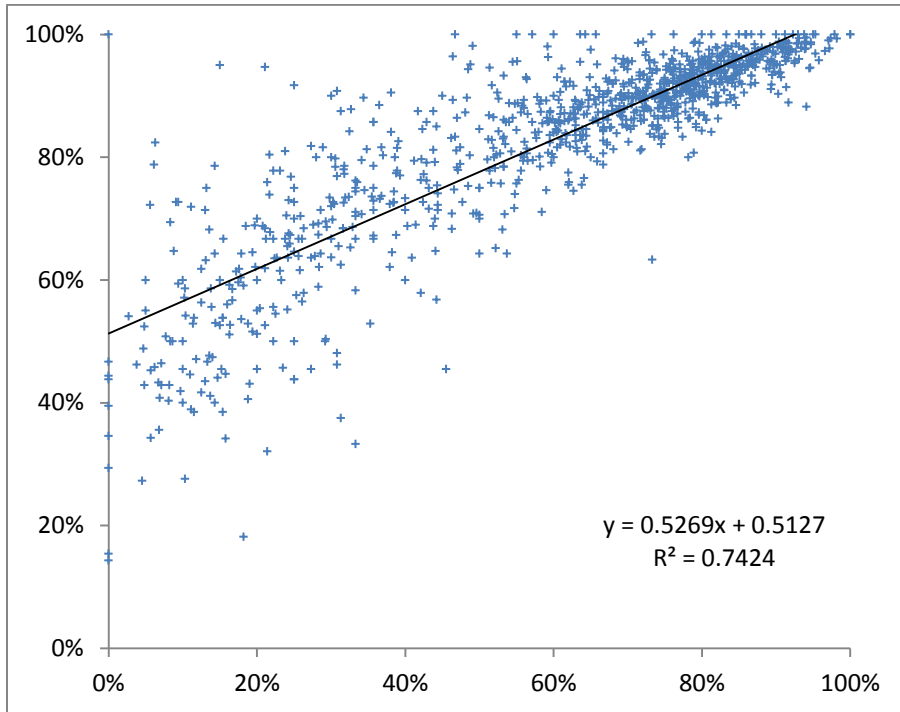


Chart 2B: 8th Grade Science versus Math Proficiency Rates – Ohio Schools, 2013-14

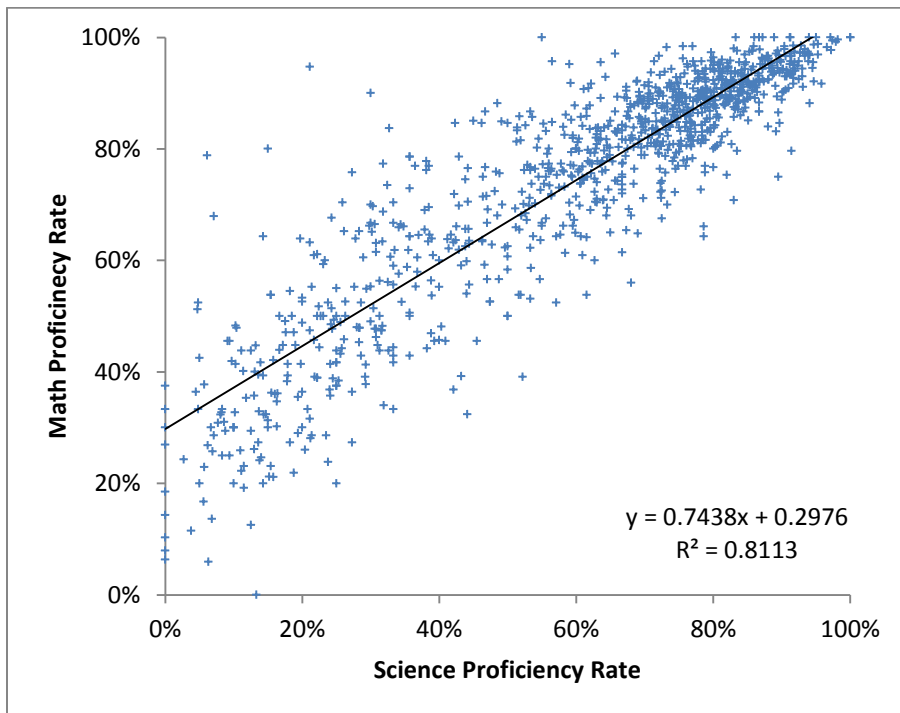


Chart 3A: 10th Grade Social Studies versus Reading Proficiency Rates – Ohio Schools, 2013-14



Chart 3B: 10th Grade Social Studies versus Math Proficiency Rates – Ohio Schools, 2013-14

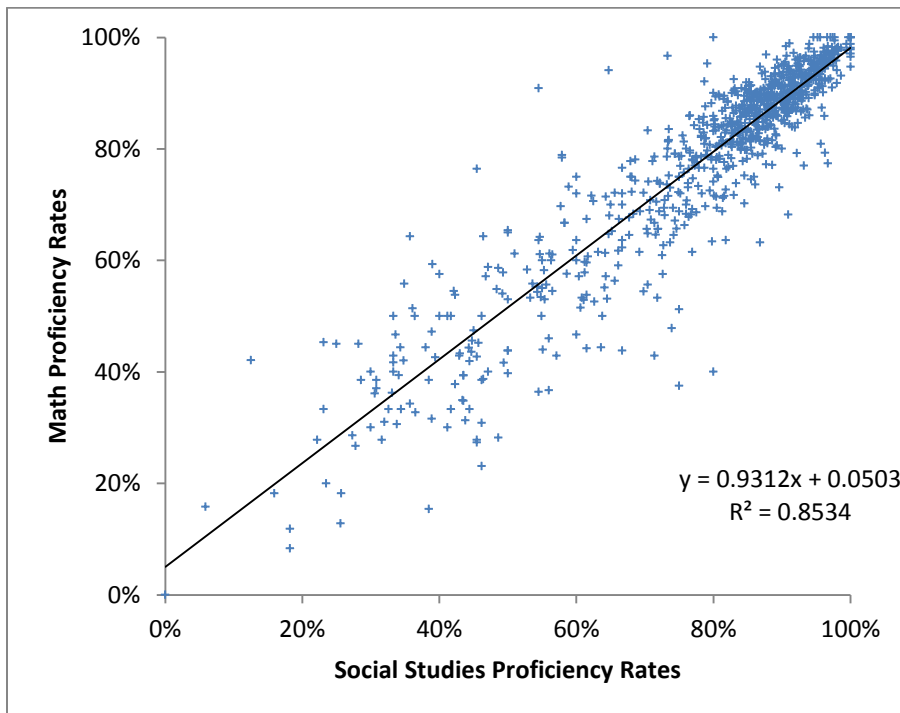


Chart 4A: 10th Grade Science versus Reading Proficiency Rates – Ohio Schools, 2013-14

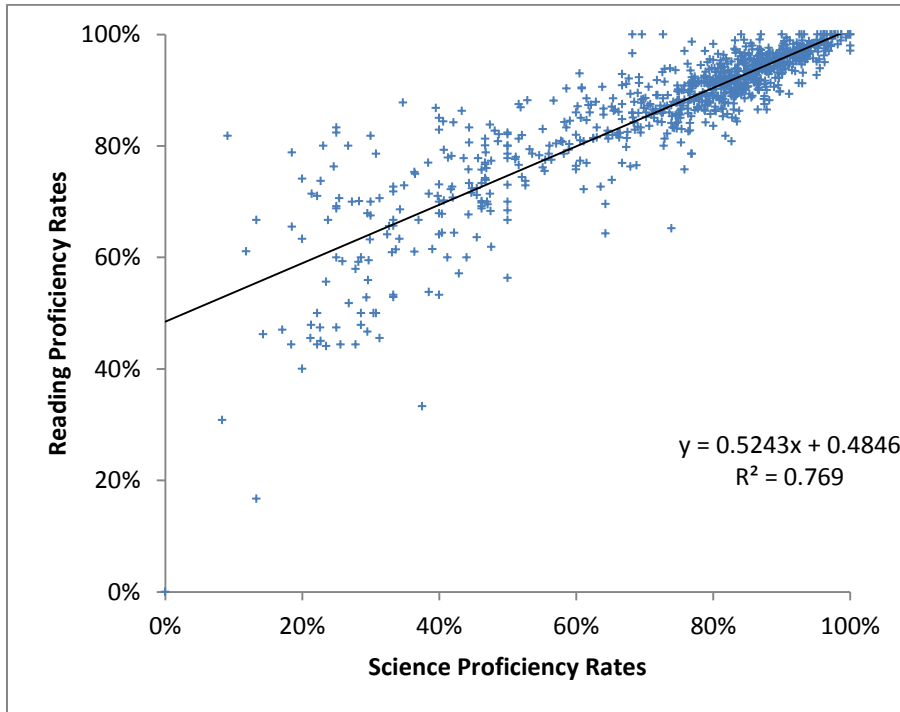


Chart 4B: 10th Grade Science versus Math Proficiency Rates – Ohio Schools, 2013-14

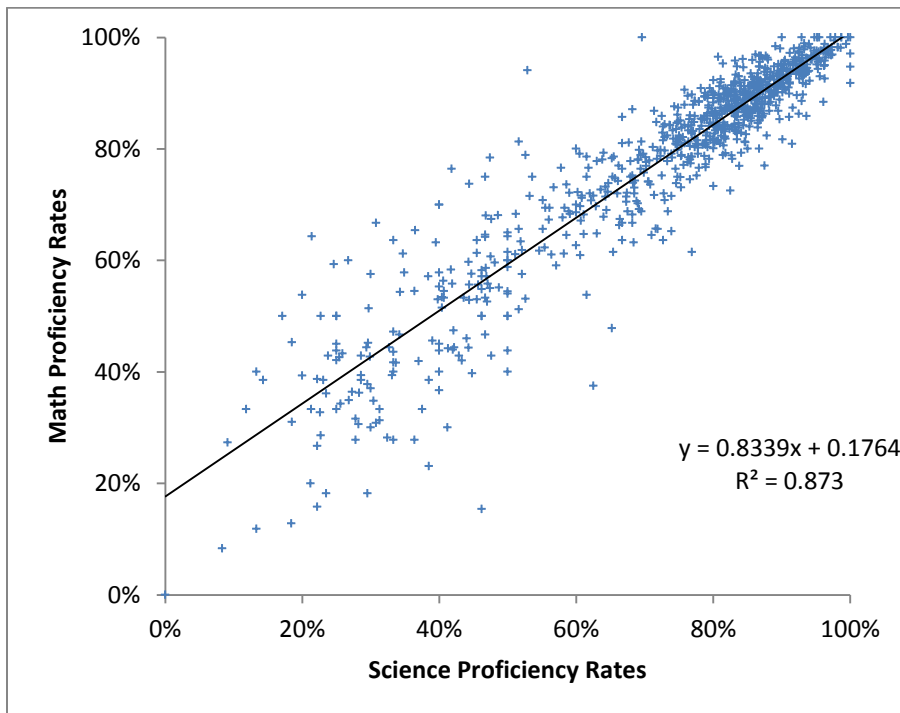


Table 1: Correlations between science/social studies and math and reading proficiency rates – Ohio schools, 2013-14

		Math	Reading
5th Grade	Science	0.90	0.92
8th Grade	Science	0.90	0.86
10th Grade	Science	0.93	0.88
10th Grade	Social Studies	0.89	0.93

Note: [Correlation coefficients](#) measure the strength and direction of the linear relationship between two variables (e.g., science proficiency of students in School X and math proficiency of students in School X). Coefficients can range from -1.0 to +1.0, with -1 indicating a perfect negative correlation and +1 indicating a perfect positive correlation; 0 indicates no correlation at all. Table 1 indicates that science and social studies test results are strongly correlated to math and reading results (nearing 1.0, or perfect positive correlation).