

2012-2013 Report Card for Sciotoville

SCHOOL GRADE

Coming in
2015



Achievement

This grade combines two results for students who took the state tests. The first result answers the question – How many students passed the state test? The second result answers the question – How well did students do on the state test?

Performance Index

72.8% **C**

Indicators Met

45.0% **F**

COMPONENT GRADE

Coming in
2015



Progress

This is your district's average progress for its students in math and reading, grades 4-8. It looks at how much each student learns in a year. Did the students get a year's worth of growth? Did they get more? Did they get less?

Value Added

Overall..... **C**

Gifted..... **NR**

Students with Disabilities..... **D**

Lowest 20% in Achievement..... **C**

COMPONENT GRADE

Coming in
2015



Gap Closing

This grade shows how well all students are doing in your district in reading, math, and graduation. It answers the question – Is every student succeeding, regardless of income, race, culture or disability?

Annual Measurable Objectives

24.6% **F**

COMPONENT GRADE

Coming in
2015



Graduation Rate

This grade answers the question – How many ninth graders graduate in four years or five years?

Graduation Rates

95.2% of students graduated in 4 years..... **A**

86.2% of students graduated in 5 years..... **C**

COMPONENT GRADE

Coming in
2015



K-3 Literacy

This grade answers the question – Are more students learning to read in kindergarten through third grade? The 2014 report card will report some results. The 2015 report card will display one grade for kindergarten through grade 3.

COMPONENT GRADE

Coming in
2015



Prepared for Success

This grade answers the question – Are students who graduate from our district ready for college or a career? There are six ways to show that graduates are prepared. In the 2014 school year, the report card will show results for the six areas. The 2015 report card will display one grade combining the results of all six ways of showing graduates are prepared.

COMPONENT GRADE

Coming in
2015

Achievement



This grade combines two results for students who took the state tests. The first result answers the question – How many students passed the state test? The second result answers the question – How well did students do on the state test?

COMPONENT GRADE

Coming in
2015

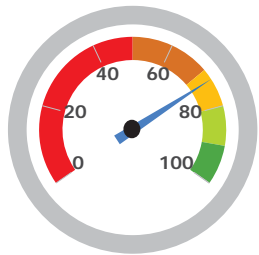
GRADE

C

Performance Index

The Performance Index measures the test results of every student, not just those who score proficient or higher. There are six levels on the index and districts receive points for every student in each of these levels. The higher the achievement level the more the points awarded in the district's index. This rewards schools and districts for improving performance.

Performance Index

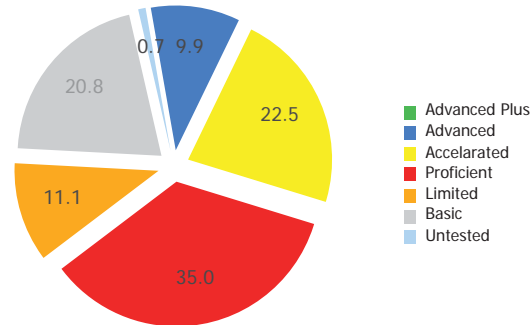


72.8%

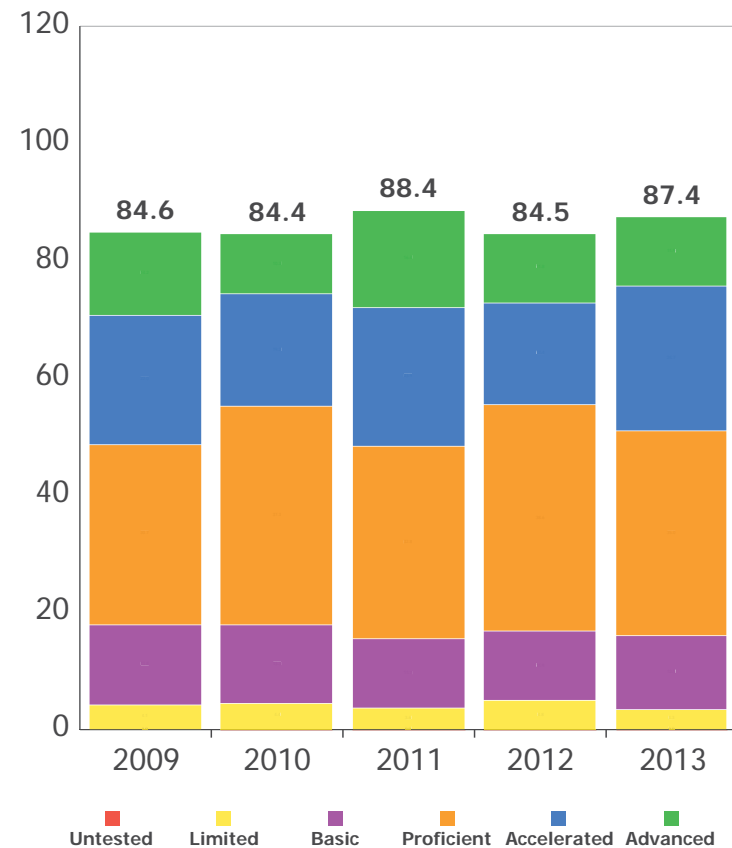
87.4 of a possible 120.0

A = 90.0 - 100.0%
B = 80.0 - 89.9%
C = 70.0 - 79.9%
D = 50.0 - 69.9%
F = 0.0 - 49.9%

Achievement Level	Pct of Students	Points for this Level	Points Received
Advanced Plus	0.0	x 1.3	= 0.0
Advanced	9.9	x 1.2	= 11.9
Accelerated	22.5	x 1.1	= 24.7
Proficient	35.0	x 1.0	= 35.0
Basic	20.8	x 0.6	= 12.5
Limited	11.1	x 0.3	= 3.3
Untested	0.7	x 0.0	= 0.0
			87.4



Performance Index Trend



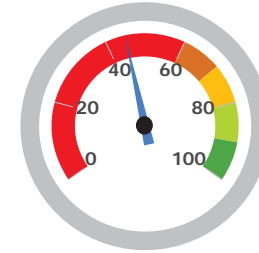
GRADE
F
Indicators Met

Indicators Met measures how many students have passed the state tests at a minimum level, called proficient, or higher. Test results are reported for each student in a grade and subject. At least 75 percent of students must pass to get credit for the indicator. Starting in the 2013-14 school year, a district or school needs to have 80 percent of their students pass at a minimum level or higher in order to "meet" an indicator.

Indicators Met %
45.0%

9.0 out of 20.0

A = 90.0 - 100.0%
 B = 80.0 - 89.9%
 C = 70.0 - 79.9%
 D = 50.0 - 69.9%
 F = 0.0 - 49.9%


Grades 3-5

3rd Grade	Mathematics	NC	
	Reading	NC	
4th Grade	Mathematics	NC	
	Reading	NC	
5th Grade	Mathematics	43.8%	✗
	Reading	62.5%	✗
	Science	43.8%	✗

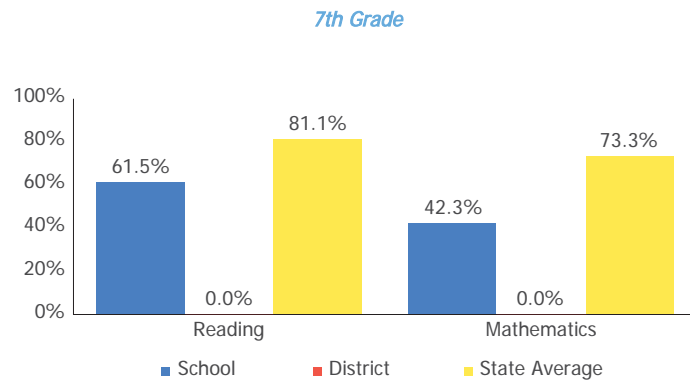
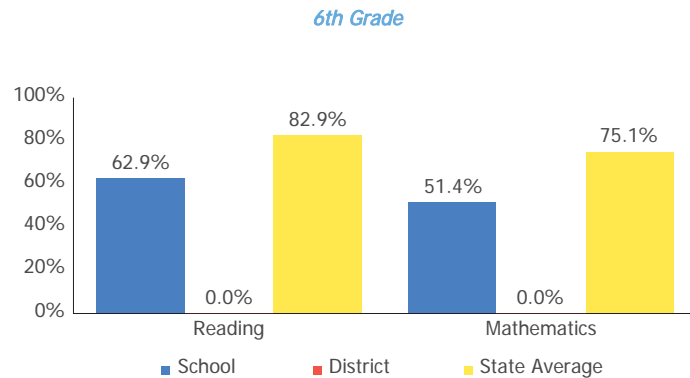
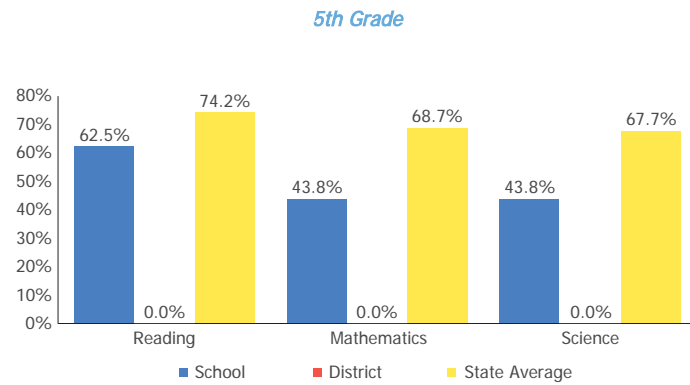
Grades 6-8

6th Grade	Mathematics	51.4%	✗
	Reading	62.9%	✗
7th Grade	Mathematics	42.3%	✗
	Reading	61.5%	✗
8th Grade	Mathematics	70.4%	✗
	Reading	81.5%	✓
	Science	63.0%	✗

Ohio Graduation Test

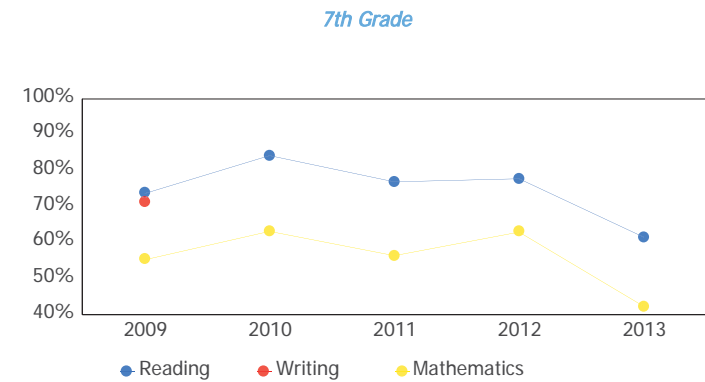
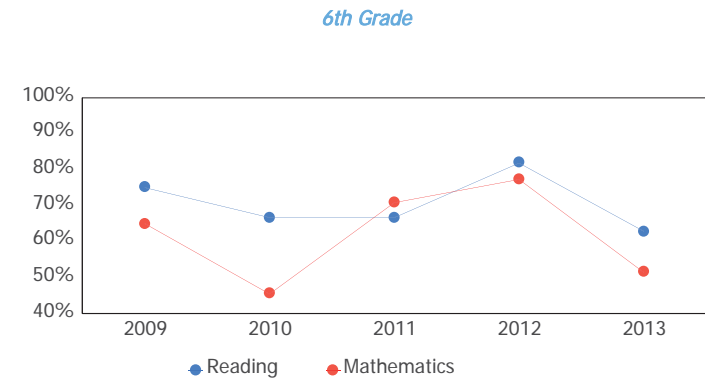
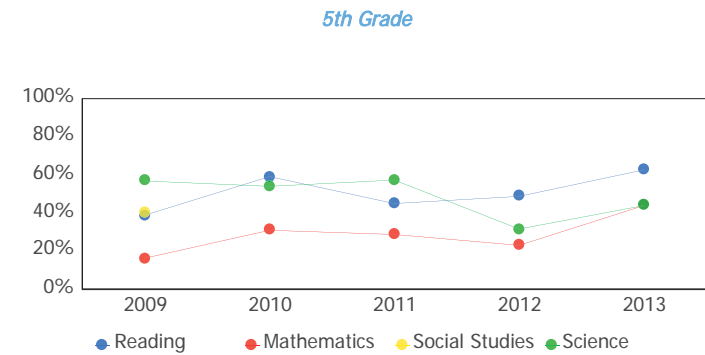
OGT, 10th Graders	Mathematics	84.4%	✓
	Reading	81.3%	✓
	Science	84.4%	✓
	Social Studies	75.0%	✓
	Writing	81.3%	✓
OGT, 11th Graders	Mathematics	88.6%	✓
	Reading	93.2%	✓
	Science	81.8%	✗
	Social Studies	77.3%	✗
	Writing	90.9%	✓

Proficiency Percent Comparison by Grade



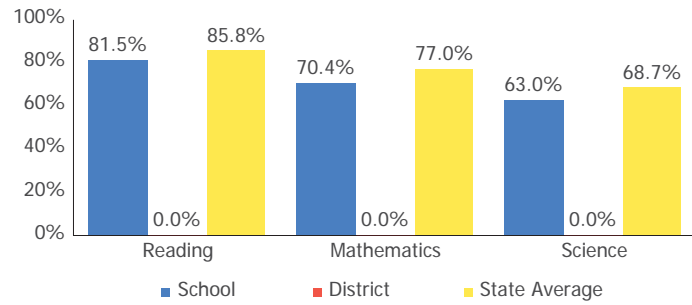
8th Grade

Proficient Percent Trend by Grade

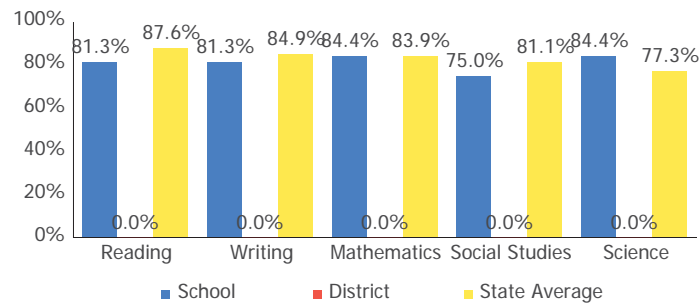


8th Grade

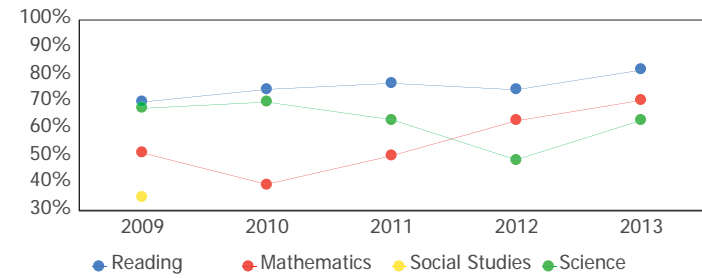
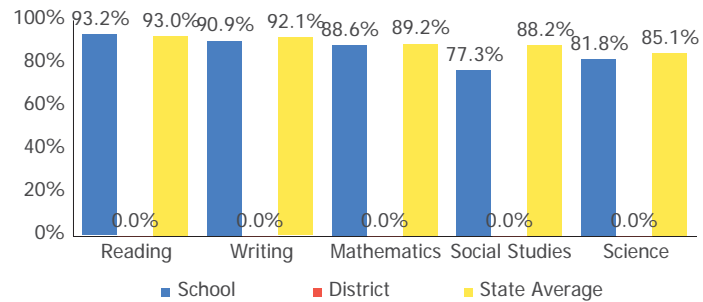
2012-2013 Report Card for Sciotoville



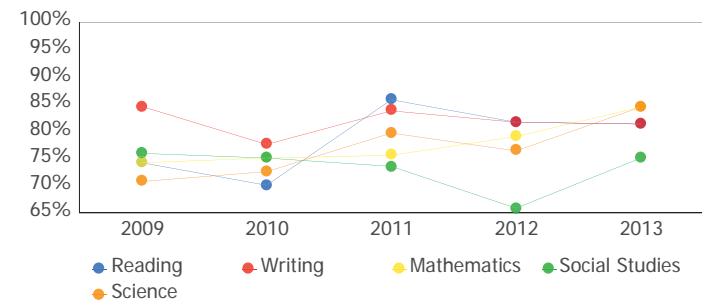
10th Grade OGT



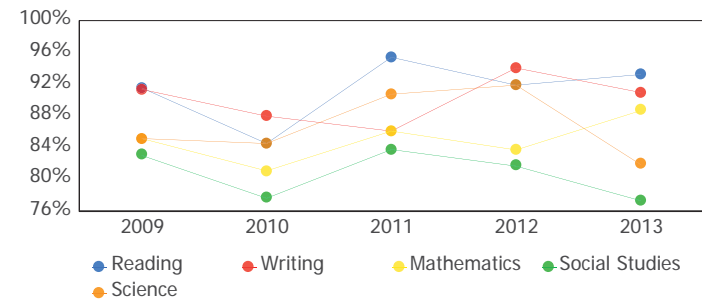
11th Grade Cumulative OGT



10th Grade OGT



11th Grade Cumulative OGT



Progress



This is your school's average progress for its students in math and reading, grades 4-8. It looks at how much each student learns in a year. It answers the question – Did the students get a year's worth of growth? Did they get more? Did they get less?

COMPONENT GRADE

Coming in
2015

GRADE

C

Overall

This measures the progress for all students in math and reading, grades 4-8.

GRADE

NR

Gifted Students

This measures the progress for students identified as gifted in reading, math, and/or superior cognitive ability.

GRADE

C

Students in the Lowest 20% in Achievement

This measures the progress for students identified as the lowest 20% statewide in reading and math achievement.

GRADE

D

Students with Disabilities

This measures the progress for students with disabilities.

GRADE

Coming
in 2016

High School

A High School measure of progress will be implemented in the 2015-16 school year.

Progress Details

This table shows the Progress scores by test grade and subject.

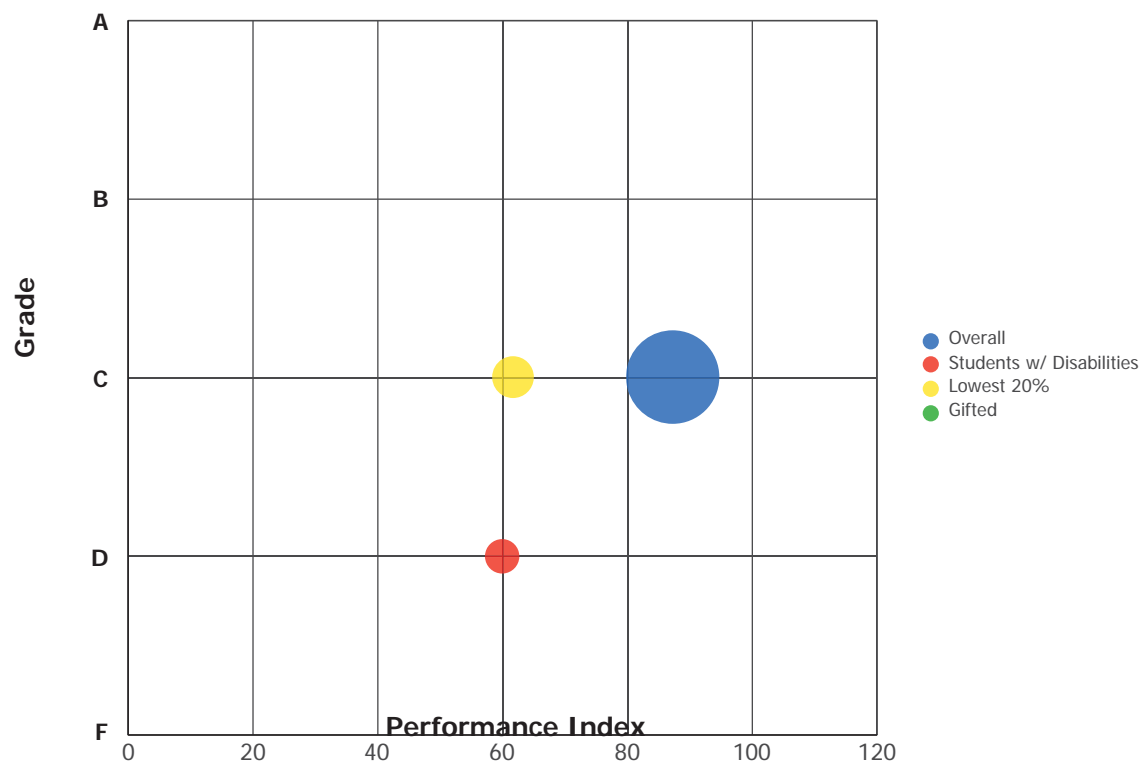
Test Grade	Progress Score		
	Reading	Mathematics	All Tests
All Grades	-0.3	-1.0	-0.8
5th Grade	-0.1	-3.0	-1.9
6th Grade	-2.2	3.9	0.8
7th Grade	1.2	-2.0	-0.3
8th Grade	0.8	-0.3	0.3

Although Progress scores are not assigned letter grades at this level of detail, the grading scale applied at the Overall (All Students, All Tests) level is:

A = 2.0 and up
B = 1.0 to 1.9
C = -1.0 to 0.9
D = -2.0 to -1.1
F = below -2.0

Progress vs. Performance Index

This bubble chart shows the relationship between each subgroup's performance index results (horizontal axis) to the Value-Added letter grade (vertical axis). The size of the bubble represents the size of the student subgroup.



Gap Closing



This grade shows how well all students are doing in your district in reading, math, and graduation. It answers the question – Is every student succeeding, regardless of income, race, culture or disability?

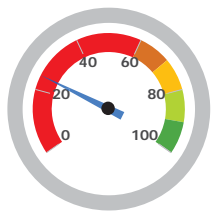
COMPONENT GRADE

Coming in
2015

GRADE

F

AMO Points

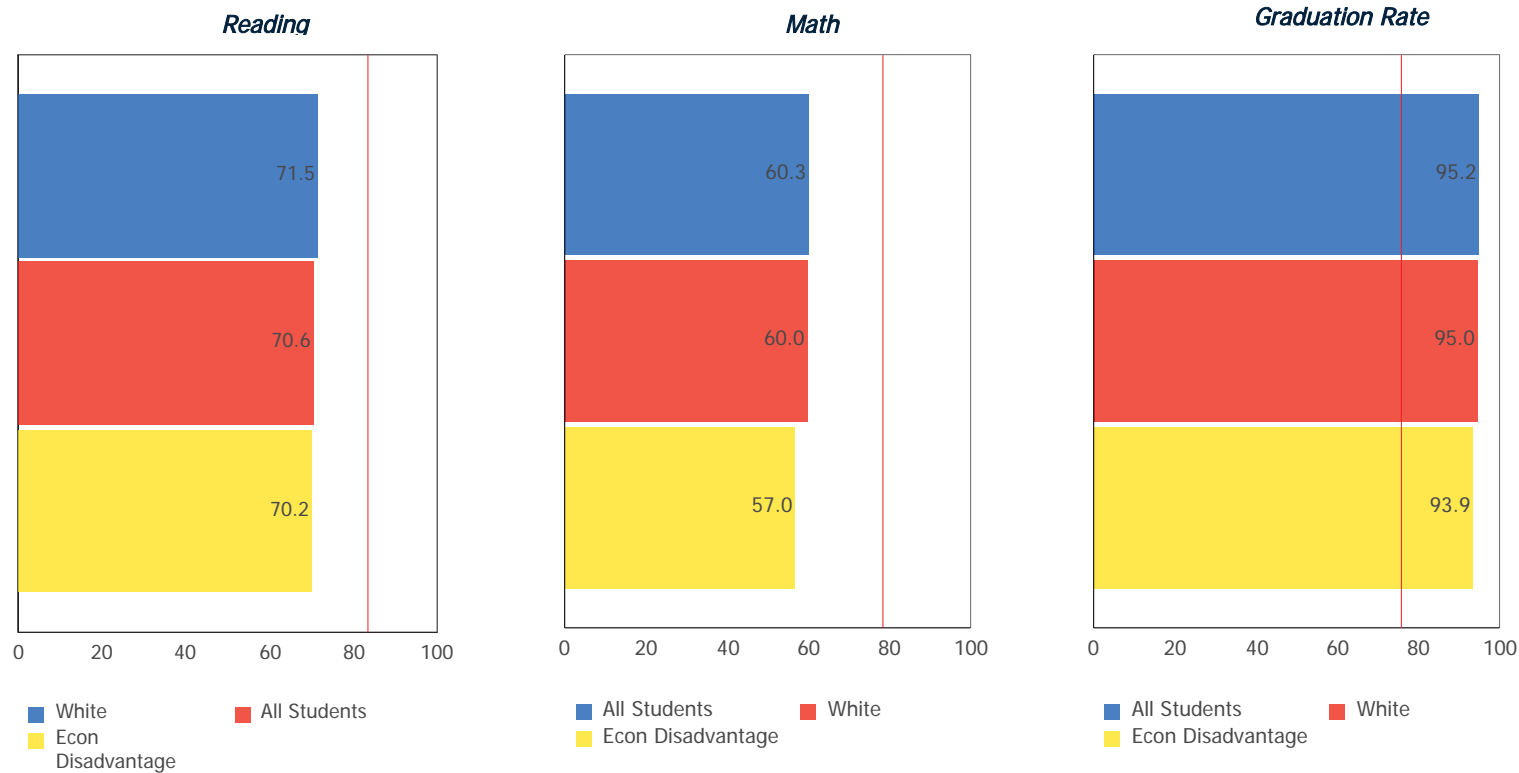


24.6%

A = 90.0 - 100.0%
B = 80.0 - 89.9%
C = 70.0 - 79.9%
D = 60.0 - 69.9%
F = 0.0 - 59.9%

Annual Measurable Objectives

Annual Measurable Objectives (AMOs) compare the performance of all students to a state goal which is displayed as the red line in the following charts. These charts show how well each group achieves that goal in reading, math and graduation – and emphasize any achievement gaps that exist between groups. The ultimate goal is for all groups to achieve at high levels.



The red line on each graph identifies the Annual Measurable Objective. The 2013 AMO for Reading is 83.4%, for Math is 78.5%, and for Graduation Rate is 75.9%. Subgroups with fewer than 30 students are not rated and do not appear on the graphs.

Graduation Rate



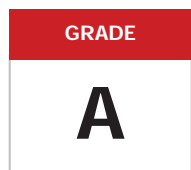
This grade represents the percentage of students whom entered the 9th grade and graduated 4 and 5 years later.

COMPONENT GRADE

Coming in
2015

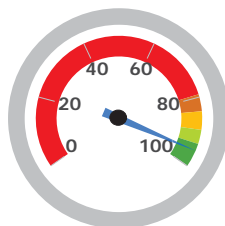
4-Year Graduation Rate

The 4-year graduation rate applies to the Class of 2012 who graduated within four years, i.e. students who entered the 9th grade in 2009 and graduated by 2012.



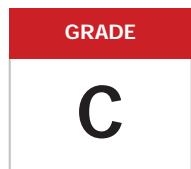
95.2%

A = 93.0 - 100.0%
B = 89.0 - 92.9%
C = 84.0 - 88.9%
D = 79.0 - 83.9%
F = 0.0 - 78.9%



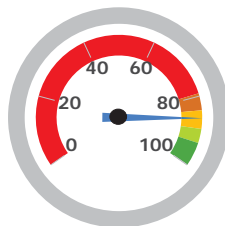
5-Year Graduation Rate

The 5-year graduation rate applies to the Class of 2011 who graduated within five years, i.e. students who entered the 9th grade in 2008 and graduated by 2012.

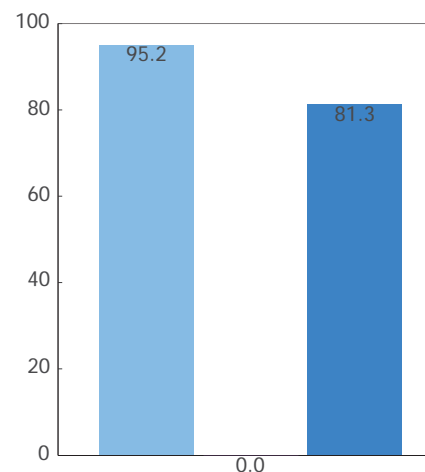


86.2%

A = 95.0 - 100.0%
B = 90.0 - 94.9%
C = 85.0 - 89.9%
D = 80.0 - 84.9%
F = 0.0 - 79.9%

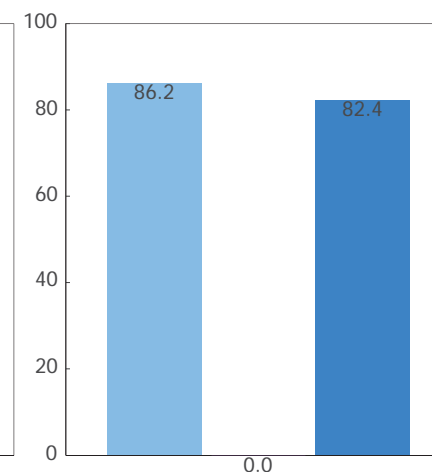


4-Year Rate



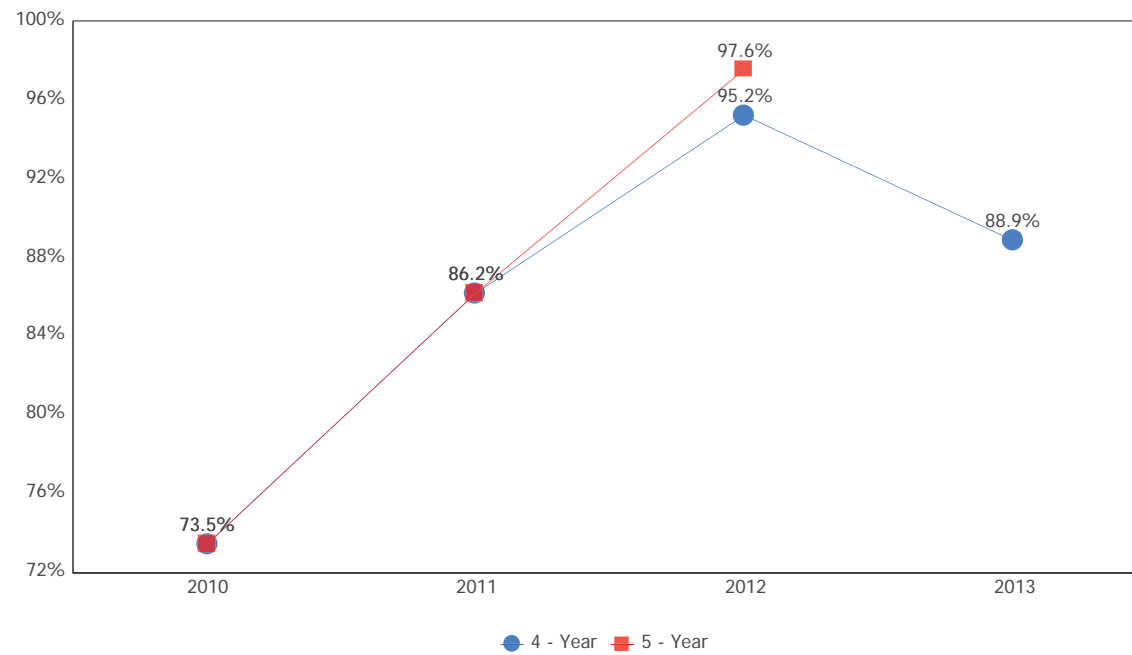
School District
State Average

5-Year Rate



School District
State Average

Graduation Rate Trend



Note: The 5-year graduation rate does not appear in the final year of this graph because the necessary data is not yet available to calculate the 5-year rate for that school year.

2012-2013 Report Card for Sciotoville



Principal: Michael D. Yeagle

Phone: (740) 776-6777

Address: 224 Marshall St
Portsmouth OH 45662-5549

Directory information current as of the 2012-2013 Report Card publication date

Your School's Students

**Average
Daily
Enrollment:**

310

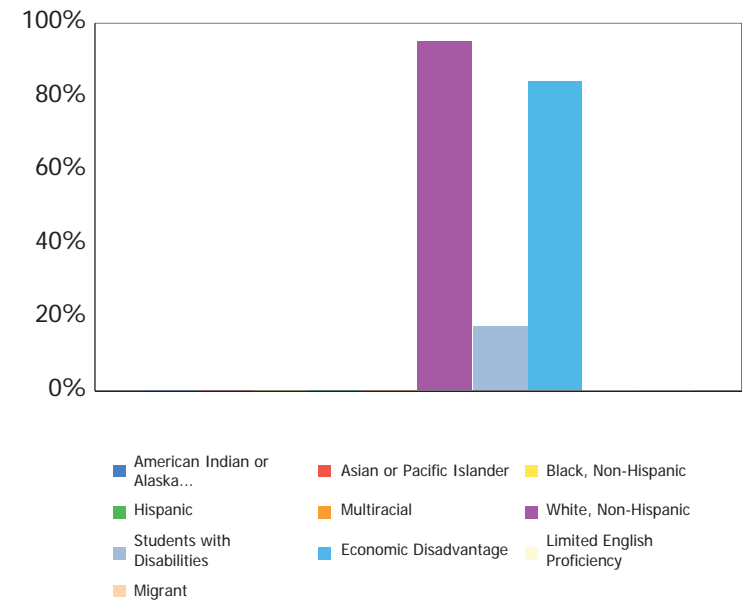
**Number of
Limited
English
Proficiency
Students
Excluded from
Accountability
Calculations:**

--

Enrollment by Subgroup

	Enrollment #	Enrollment %
Am. Indian / Alaskan Native	NC	
Asian or Pacific Islander	NC	
Black, Non-Hispanic	NC	
Hispanic	NC	
Multiracial	NC	
White, Non-Hispanic	295	95.2%
Students with Disabilities	55	17.8%
Economically Disadvantaged	261	84.3%
Limited English Proficiency	NC	
Migrant	NC	

NC = Not Calculated because there are fewer than 10 in the group



Mobility Rates by Subgroup

	Student Mobility %
All Students	0.0%
Am. Indian / Alaskan Native	NC
Asian or Pacific Islander	NC
Black, Non-Hispanic	NC
Hispanic	NC
Multiracial	NC
White, Non-Hispanic	0.0%
Students with Disabilities	0.0%
Economically Disadvantaged	0.0%
Limited English Proficiency	NC
Migrant	NC

NC = Not Calculated because there are fewer than 10 in the group

A mobility rate chart cannot be displayed for this school because either there are not enough students to evaluate in any subgroup or all calculated results are 0.0%.

Your School's Teachers

Your School's Poverty Status: High	Your School	Your District
Percentage of teachers with at least a Bachelor's Degree	100.0	--
Percentage of teachers with at least a Master's Degree	23.2	--
Percentage of core academic subject and elementary classes not taught by Highly Qualified Teachers	0	--
Percentage of core academic subject and elementary classes taught by properly certified teachers	100	--
Percentage of core academic subject elementary and secondary classes taught by teachers with temporary, conditional or long-term substitute certification/licensure	4.1	--

High-poverty schools are those ranked in the top quartile based on the percentage of economically disadvantaged students. Low-poverty schools are those ranked in the bottom quartile based on the percentage of economically disadvantaged students. A district may have buildings in both quartiles, in just one quartile or in neither quartile.

NC = Not Calculated because there are fewer than 10 in the group

Wellness and Physical Education

The extent to which students are successful in meeting the benchmarks contained in Ohio's physical education standards

Moderate Success

Financial Data



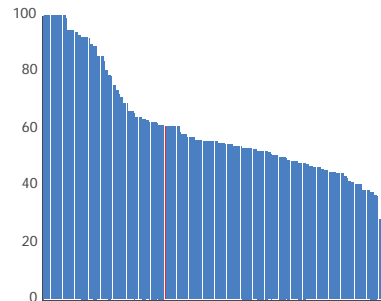
These measures answer several questions about spending and performance. How much is spent on Classroom instruction? How much, on average, is spent on each student? What is the source of the revenue? How do these measures compare to other districts and schools?

Comparison Group: Enrollment between 150 and 499

Classroom Spending Data

Percentage Spent on
Classroom Instruction
61.3%

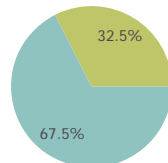
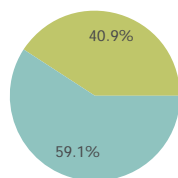
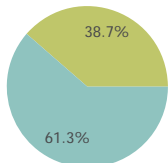
Rank in comparison group
for highest % spent
53 out of 162



School

Comparison Group

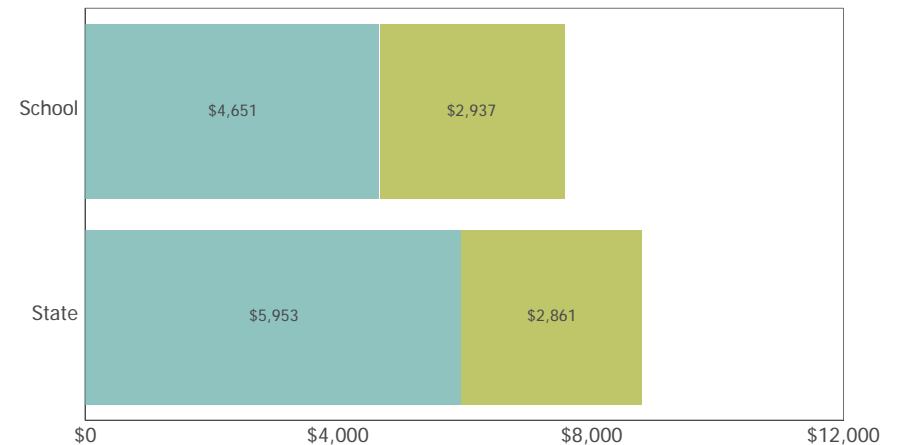
State



Classroom Instruction Non-Classroom Instruction

Spending per Pupil Data

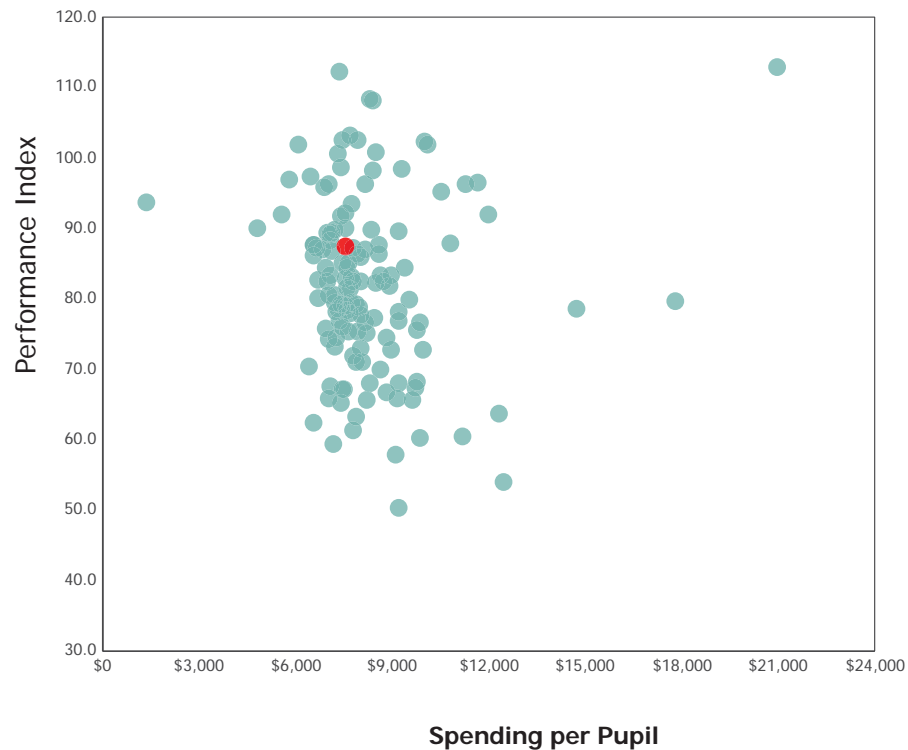
	School	State
Operating Spending per Pupil	\$7,588	\$8,814
Classroom Instruction	\$4,651	\$5,953
Non-Classroom Spending	\$2,937	\$2,861



Spending and Performance

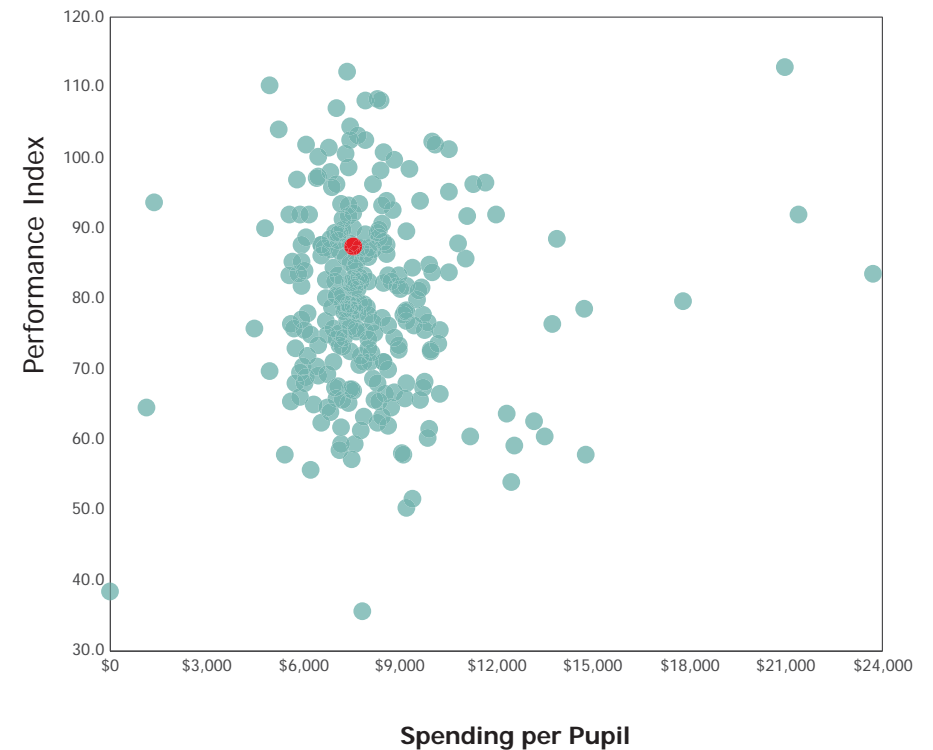
This measure answers the question – what is the relationship of average spending per student to performance, and how does that compare to similar districts and schools?

Comparison Group



❌ Sciotoville IS NOT among the 20% of traditional community schools with the highest academic performance index scores.

All Community & STEM Schools

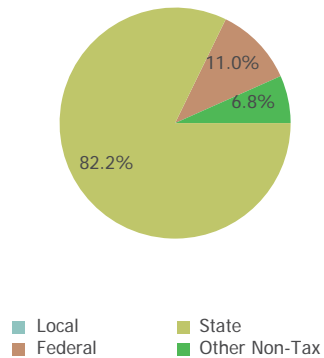


❌ Sciotoville IS NOT among the 20% of traditional community schools with the lowest operating expenditures per pupil.

Source of Revenue

Source of Funds	School		State Total	
Local	\$0	0.0%	\$7,953,216,862	40.1%
State	\$2,301,323	82.2%	\$8,725,275,316	44.0%
Federal	\$308,332	11.0%	\$1,701,436,355	8.6%
Other Non-Tax	\$190,124	6.8%	\$1,442,122,710	7.3%
Total	\$2,799,779	100.0%	\$19,822,051,242	100.0%

School



State

