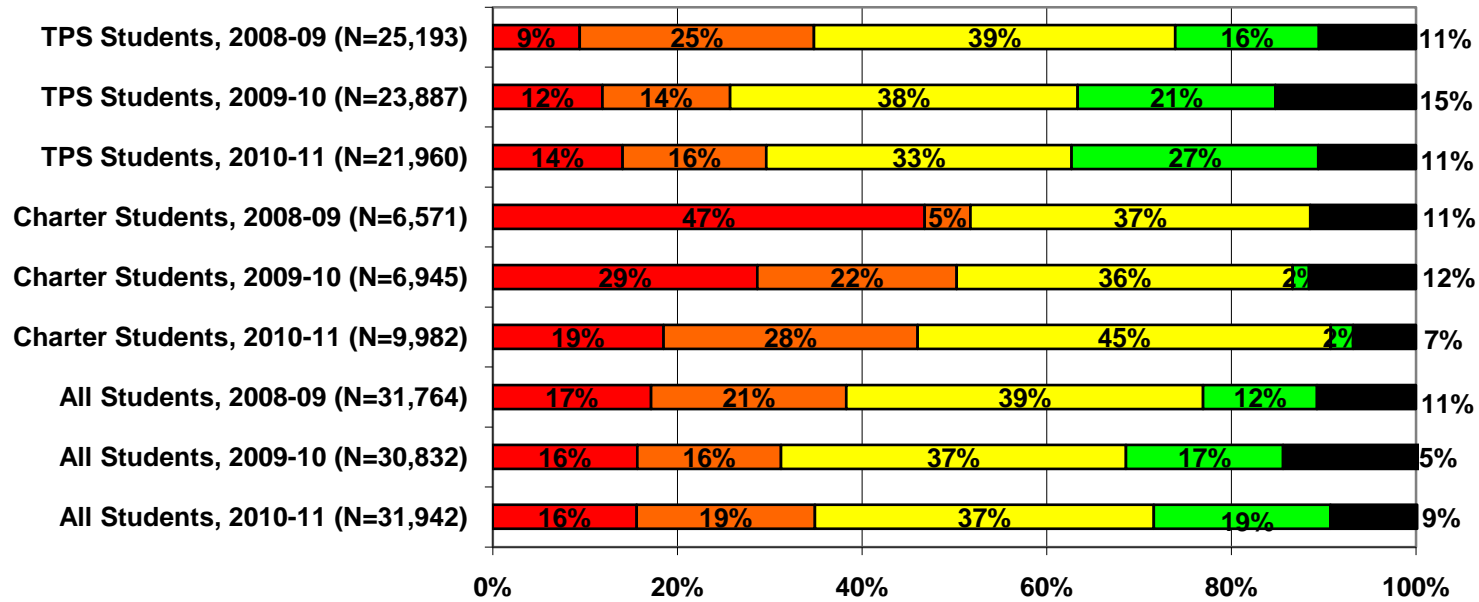




Detailed Analysis of School Performance in Toledo (2010-11)

Graph I: Percent of Toledo Students in Public Schools by State Designation (2008-09, 2009-10, and 2010-11)

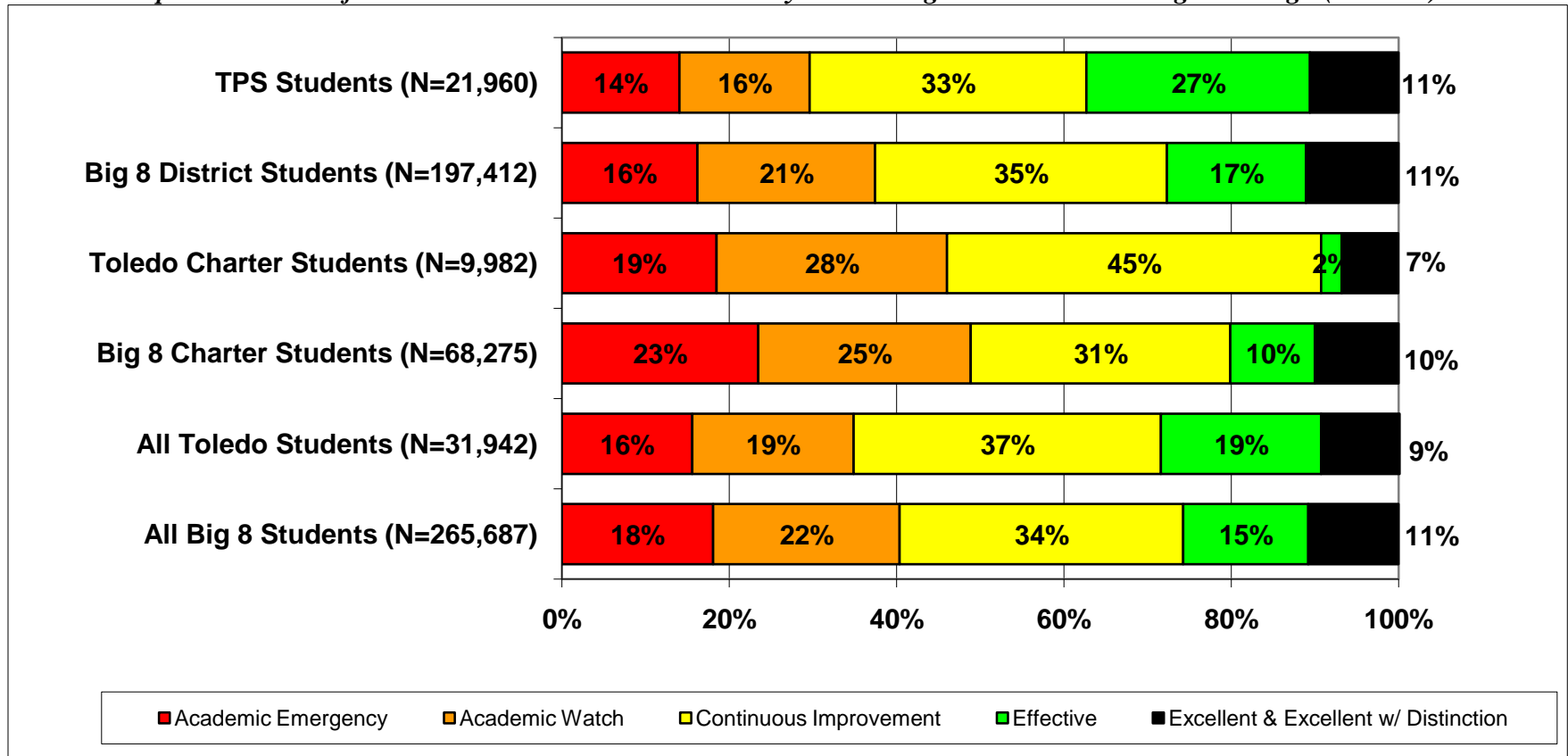


■ Academic Emergency
 ■ Academic Watch
 ■ Continuous Improvement
 ■ Effective
 ■ Excellent & Excellent w/ Distinction

Source: Ohio Department of Education interactive Local Report Card

Note: This chart does not include students in schools that are unrated and students attending charter e-schools.

Graph II: Percent of Toledo Students in Public Schools by State Designation versus the Big 8 Average* (2010-11)

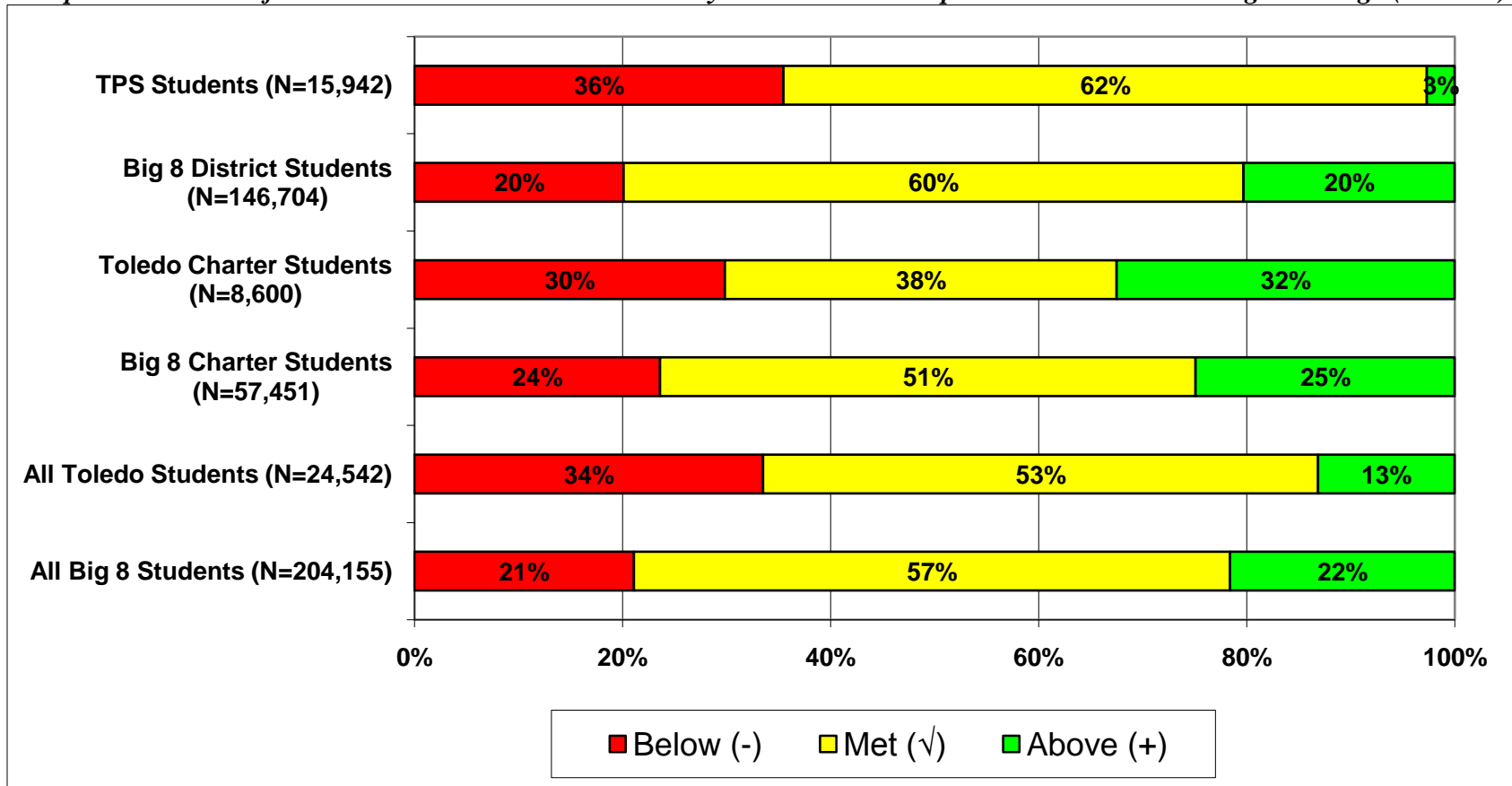


Source: Ohio Department of Education interactive Local Report Card

Note: This chart does not include students in schools that are unrated and students attending charter e-schools.

* The Big 8 districts are defined as Ohio’s largest urban districts: Akron, Canton, Cincinnati, Cleveland, Columbus, Dayton, Toledo, and Youngstown.

Graph III: Percent of Toledo Students in Public Schools by Value-added Composite Score versus the Big 8 Average (2010-11)



Source: Ohio Department of Education interactive Local Report Card

Note: This chart does not include students in schools that did not receive a value-added composite score or students attending charter e-schools.

Table I: Toledo Public Schools (District and Charter) Ranked by Performance Index Score

The following pages list Toledo's public charter and district schools ranked by Performance Index (PI) score[†] for the 2010-11 school year. Numerous other performance indicators are also included, but the Performance Index score was selected for ranking the schools because it provides an overall indication of how well students perform on all tested subjects in grades 3 through 8 and the Ohio Graduation Test.

We strongly encourage readers to look closely at the number of standards met and the number of standards possible. A school with a large number of possible standards and possible standards met has gotten a large percentage of students to the state proficiency goals.

We also encourage readers to consider schools' value-added results. Where the Performance Index reflects student achievement at one point in time, value-added tells us how a school is doing at helping its students make progress from year to year. For more on value-added, see Fordham's value-added primer on our website:

http://www.edexcellencemedia.net/publications/2008/200808_ohiovalueaddedprimer/Ohio_Value_Added_Primer_FINAL_small.pdf

[†] The Performance Index score is calculated by multiplying the percentage of students that are untested, below basic/limited, basic, proficient, accelerated, or advanced by weights ranging from 0 for untested to 1.2 for advanced students. The totals are then summed up to obtain the school or district's PI score. PI scores range from 0 to 120, and the state has set the goal for all schools to achieve a PI score of 100 or better. For a complete description of how the Ohio Department of Education calculates the PI score see their website here:

<http://www.ode.state.oh.us/GD/DocumentManagement/DocumentDownload.aspx?DocumentID=29878>.

Table I: Toledo Public Schools (District and Charter) Ranked by Performance Index Score (2010-11)

Rank	Building Name	Type	PI Score 10-11	PI Score 09-10	Designation 10-11	Overall AYP 10-11	# of standards met 10-11	# of standards possible 10-11	Value-added Composite 10-11	Enrollment	Grade Span
1	Toledo Early College High School	District	112.5	108.8	Excellent	Met	12	12	--	209	9-12
2	The Autism Academy Of Learning	Charter	111.8	111.7	Not Rated	Met	1	1	--	51	K-12
3	Autism Model School	Charter	110.8	111.2	Not Rated	Met	0	1	--	80	K-12
4	Toledo Technology Academy High School	District	109.3	105.8	Excellent	Met	12	12	--	166	9-12
5	Toledo School For The Arts	Charter	105.7	104.5	Excellent	Met	19	19	Met	581	6-12
6	Elmhurst Elementary School	District	101.6	99.6	Excellent	Met	8	8	Met	345	K-5
7	Start High School	District	100.2	102.9	Excellent	Met	11	12	--	1271	9-12
8	Grove Patterson Academy Elementary School	District	99.6	101.6	Effective	Met	13	15	Met	372	K-8
9	Beverly Elementary School	District	99.1	100	Excellent	Met	10	10	Met	332	K-6
10	Harvard Elementary School	District	98.9	103.5	Effective	Met	8	10	Below	394	K-6
11	Toledo Preparatory and Fitness Academy	Charter	97.4	79.7	Excellent	Met	2	3	Above	95	K-8
12	Rogers High School	District	94.3	85.3	Effective	Met	7	12	--	768	9-12
13	Old Orchard Elementary School	District	93.8	88.1	Effective	Met	5	8	Met	237	K-5
14	Crossgates Elementary School	District	93.7	92.5	Effective	Not Met	6	10	Met	366	K-6
15	Ottawa River Elementary School	District	93	92.6	Effective	Met	9	15	Met	493	K-8
16	Longfellow Elementary School	District	92.6	91.8	Effective	Not Met	5	8	Met	370	K-5
17	Arlington Elementary School	District	91.6	92.8	Effective	Not Met	5	10	Met	422	K-6
18	Larchmont Elementary School	District	90.5	89.7	Effective	Met	5	12	Met	392	K-6
19	Bowsher High School	District	90.4	96.9	Effective	Not Met	7	12	--	1341	9-12
20	Old West End Academy Elementary School	District	90.1	92.6	Effective	Met	8	15	Met	288	K-8
21	Horizon Science Academy Toledo	Charter	89.7	88.6	Cont. Improvement	Not Met	8	12	--	257	K-12
22	L. Hollingworth School for Talented and Gifted	Charter	89.6	77.1	Cont. Improvement	Met	3	8	Met	213	K-8
23	Edgewater Elementary School	District	89.3	85.1	Effective	Met	3	8	Above	192	K-5
24	Walbridge Elementary School	District	89.2	87.1	Effective	Not Met	2	8	Above	230	K-5
25	Burroughs Elementary School	District	89	89.5	Cont. Improvement	Not Met	3	10	Below	430	K-6
26	Garfield Elementary School	District	88.8	93.5	Cont. Improvement	Not Met	4	10	Met	343	K-6
27	Raymer Elementary School	District	88.6	90.9	Cont. Improvement	Not Met	4	10	Met	429	K-6
28	Birmingham Elementary School	District	88.5	95.4	Cont. Improvement	Not Met	7	15	Below	328	K-8
*29	Whittier Elementary School	District	88.4	83.8	Cont. Improvement	Not Met	2	8	Met	221	K-5
*29	Byrnedale Middle School	District	88.4	86.7	Cont. Improvement	Not Met	2	6	Met	562	7-8
31	Navarre Elementary School	District	88.2	90.7	Cont. Improvement	Not Met	5	10	Below	399	K-6
32	Waite High School	District	86.9	83.6	Cont. Improvement	Not Met	4	12	--	1019	9-12
33	Bridge Academy of Ohio	Charter	86.7	90	Cont. Improvement	Not Met	1	3	--	83	K-5
34	Horizon Science Academy-Springfield	Charter	86.6	78.2	Effective	Met	5	15	Above	245	K-12
35	Wildwood Environmental Academy	Charter	85.3	91.2	Cont. Improvement	Not Met	7	25	Met	288	K-12
36	Knight Academy	Charter	85.1	80.8	Cont. Improvement	Met	4	11	Met	190	5-8
37	Bennett Venture Academy	Charter	84.3	85.4	Cont. Improvement	Not Met	3	15	Below	655	K-8
38	Hawkins Elementary School	District	84	81	Cont. Improvement	Not Met	3	8	Met	471	K-5
*39	Glendale-Feilbach Elementary School	District	83.4	85	Cont. Improvement	Not Met	4	10	Met	217	K-6
*39	McKinley Elementary School	District	83.4	80.3	Cont. Improvement	Not Met	4	8	Below	287	K-5
41	DeVeaux Middle School	District	81.4	82.5	Cont. Improvement	Not Met	2	8	Below	821	6-8
42	East Side Central Elementary School	District	80.9	83.2	Cont. Improvement	Not Met	2	10	Below	389	K-6

43	Aurora Academy	Charter	80.6	76.6	Cont. Improvement	Not Met	4	12	Met	135	K-8
*44	Oakdale Elementary School	District	80	89.2	Cont. Improvement	Not Met	2	10	Below	455	K-6
*44	East Broadway Middle School	District	80	76.5	Cont. Improvement	Not Met	1	6	Below	435	7-8
46	Marshall Elementary School	District	79.9	78.1	Academic Watch	Not Met	1	8	Met	215	K-5
47	McTigue Middle School	District	79.8	77.6	Academic Watch	Not Met	1	8	Met	514	6-8
48	Ella P. Stewart Academy for Girls	District	79.4	82.2	Academic Watch	Not Met	2	8	Below	273	K-5
49	Winterfield Venture Academy	Charter	79.3	83.8	Academic Watch	Not Met	2	15	Below	554	K-8
50	Chase STEM Academy	District	78.8	78.2	Cont. Improvement	Met	2	10	Met	202	K-6
51	Maritime Academy of Toledo, The	Charter	78.3	82.4	Academic Watch	Not Met	6	21	Met	224	5-12
52	Central Academy of Ohio	Charter	78	81.1	Cont. Improvement	Met	3	10	Below	53	K-12
53	Woodward High School	District	77.5	72.3	Academic Watch	Not Met	0	12	--	706	9-12
54	Riverside Elementary School	District	77.2	80	Academic Watch	Not Met	1	10	Met	376	K-6
55	Clay Avenue Community School	Charter	76.4	70.4	Academic Watch	Not Met	0	10	Met	334	K-12
56	Imani Learning Academy	Charter	75.8	72.3	Academic Watch	Not Met	2	13	Met	189	K-8
57	Summit Academy Secondary School - Toledo	Charter	75.5	78.8	Academic Watch	Not Met	2	11	--	77	8-12
58	Martin Luther King Academy for Boys Elementary School	District	75.3	66.6	Cont. Improvement	Met	3	8	Met	257	K-5
59	Keyser Elementary School	District	75	78	Academic Watch	Not Met	1	8	Met	323	K-5
60	Madison Avenue School of Arts	Charter	74.9	72.2	Academic Watch	Not Met	1	8	Met	383	K-5
61	Meadows Choice Community	Charter	74.6	66.9	Academic Watch	Not Met	3	15	Met	147	K-9
62	Eagle Academy	Charter	74.4	72.6	Academic Watch	Not Met	1	15	Met	293	K-12
63	Westfield Elementary School	District	73.3	72.8	Academic Watch	Not Met	1	8	Met	263	K-5
64	Leverette Middle School	District	72.9	69.4	Academic Watch	Not Met	0	6	Met	374	7-8
65	Northpointe Academy	Charter	72.6	85.9	Academic Watch	Not Met	2	15	Below	336	K-12
66	Life Skills Center Of Toledo	Charter	72.5	71	Academic Watch	Not Met	4	12	--	213	9-12
67	Reynolds Elementary School	District	70.8	75.6	Academic Watch	Not Met	1	8	Met	372	K-5
68	Star Academy of Toledo	Charter	69.9	56.6	Cont. Improvement	Met	0	15	Above	2453	K-12
69	Rosa Parks Elementary School	District	69.4	65.3	Academic Emergency	Not Met	1	8	Met	240	K-5
70	Allied Health Academy	District	69	61.6	Academic Emergency	Not Met	0	11	--	260	9-12
71	Lake Erie Academy	Charter	68.9	84.8	Academic Emergency	Not Met	2	13	Below	215	K-8
72	Sherman Elementary School	District	68.8	70.8	Academic Emergency	Not Met	1	10	Below	353	K-6
73	Glenwood Elementary School	District	68.6	59.8	Academic Emergency	Not Met	0	8	Met	296	K-5
74	Samuel M. Jones at Gunckel Park Middle School	District	66.5	65.8	Academic Emergency	Not Met	1	8	Below	315	6-8
75	Lagrange Elementary School	District	66.2	69.9	Academic Emergency	Not Met	2	10	Met	275	K-6
76	Business Technology and Industry Academy	District	65.7	70.6	Academic Emergency	Not Met	0	12	--	278	9-12
*77	Pickett Elementary School	District	65.6	65.3	Academic Emergency	Not Met	0	8	Below	374	K-5
*77	Spring Elementary School	District	65.6	64.3	Academic Emergency	Not Met	0	10	Met	292	K-6
79	Toledo Preparatory Academy	Charter	64.5	74	Academic Emergency	Not Met	0	12	--	116	6-12
80	Polly Fox Academy Community School	Charter	62.7	56.8	Academic Emergency	Not Met	0	12	--	120	7-12
*81	Robinson Middle School	District	62	60.4	Academic Emergency	Not Met	1	8	Below	408	6-8
*81	Victory Academy of Toledo	Charter	62	62.5	Academic Emergency	Not Met	0	3	Met	90	K-8
83	Summit Academy Community School-Toledo	Charter	57.4	59.3	Academic Emergency	Not Met	0	15	Met	171	K-10
84	Eagle Learning Center	Charter	56.7	55.1	Academic Emergency	Not Met	0	12	--	127	9-12
85	Achieve Career Preparatory Academy	Charter	55	43.1	Academic Emergency	Not Met	0	11	--	252	9-12
86	Phoenix Academy Community School	Charter	41	47.8	Academic Emergency	Not Met	0	15	Below	756	7-12

Source: Ohio Department of Education

Notes: 1) Rankings are based on Performance Index score for the 2010-11 school year. 2) Schools without a Performance Index score were removed.

* These schools were tied for the same ranking number.