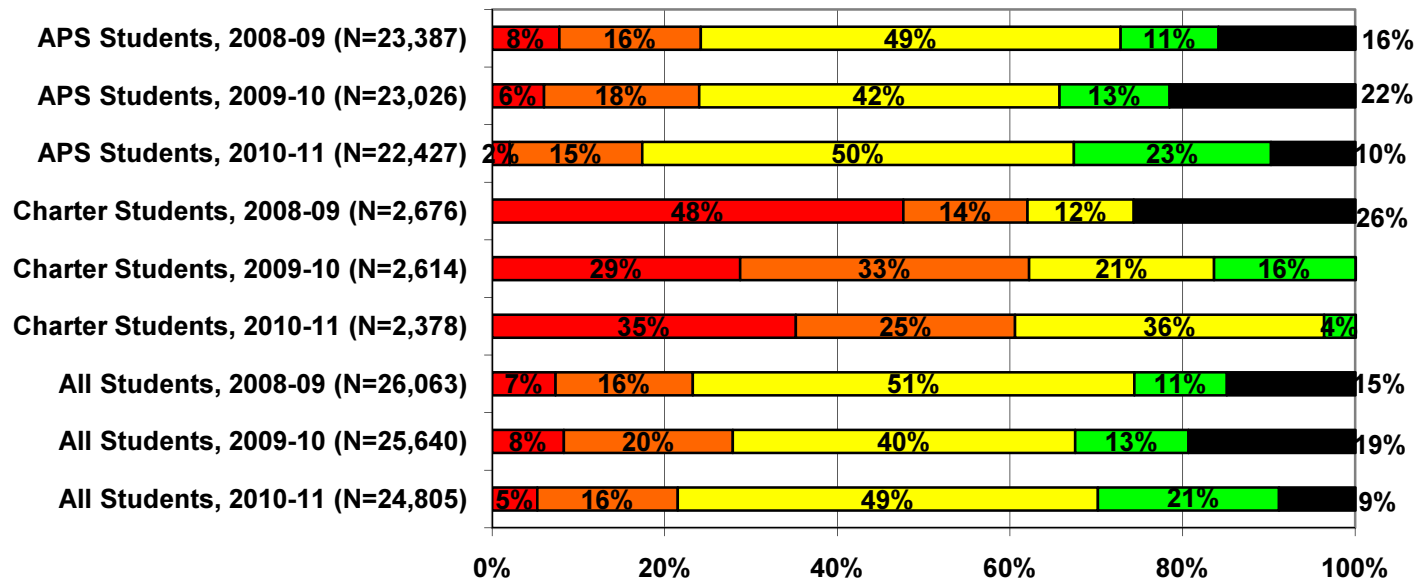




Detailed Analysis of School Performance in Akron (2010-11)

Graph I: Percent of Akron Students in Public Schools by State Designation (2008-09, 2009-10, and 2010-11)

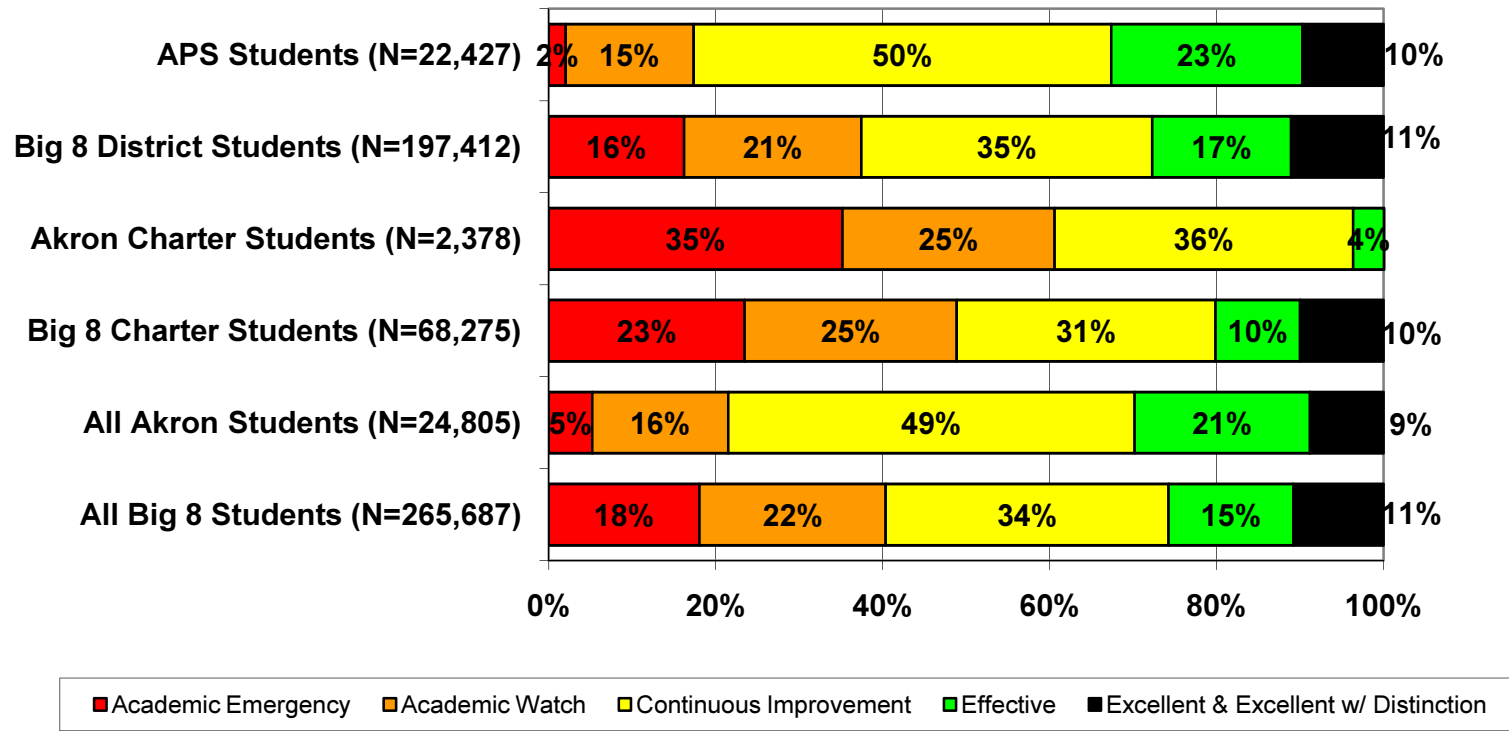


■ Academic Emergency
 ■ Academic Watch
 ■ Continuous Improvement
 ■ Effective
 ■ Excellent & Excellent w/ Distinction

Source: Ohio Department of Education interactive Local Report Card

Note: This chart does not include students in schools that are unrated and students attending charter e-schools.

Graph II: Percent of Akron Students in Public Schools by State Designation versus the Big 8 Average (2010-11)*

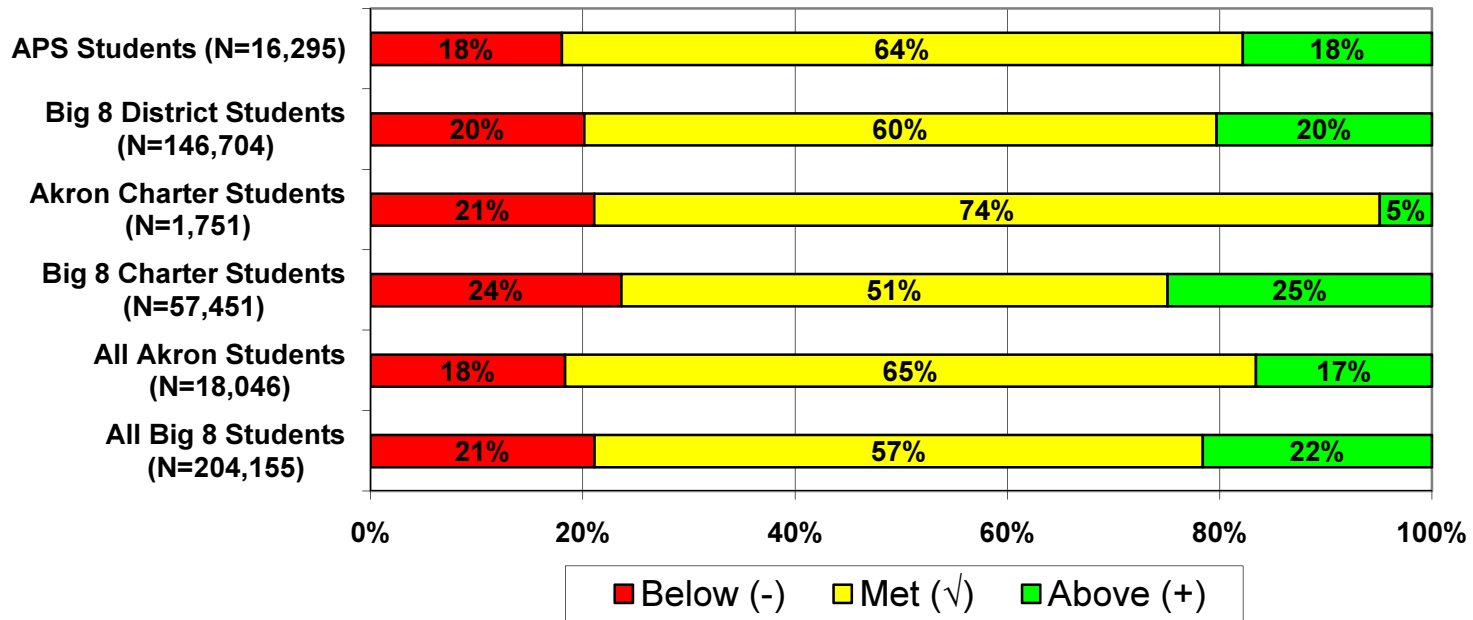


Source: Ohio Department of Education interactive Local Report Card

Note: This chart does not include students in schools that are unrated and students attending charter e-schools.

* The Big 8 districts are defined as Ohio’s largest urban districts: Akron, Canton, Cincinnati, Cleveland, Columbus, Dayton, Toledo, and Youngstown.

Graph III: Percent of Akron Students in Public Schools by Value-added Composite Score versus the Big 8 Average (2010-11)



Source: Ohio Department of Education interactive Local Report Card

Note: This chart does not include students in schools that did not receive a value-added composite score or students attending charter e-schools.

Table I: Akron Public Schools (District and Charter) Ranked by Performance Index Score

The following pages list Akron's public charter and district schools ranked by Performance Index (PI) score[†] for the 2010-11 school year. Numerous other performance indicators are also included, but the Performance Index score was selected for ranking the schools because it provides an overall indication of how well students perform on all tested subjects in grades 3 through 8 and the Ohio Graduation Test.

We also encourage readers to consider schools' value-added results. Where the Performance Index reflects student achievement at one point in time, value-added tells us how a school is doing at helping its students make progress from year to year. For more on value-added, see Fordham's value-added primer on our website:

http://www.edexcellencemedia.net/publications/2008/200808_ohiovalueaddedprimer/Ohio_Value_Added_Primer_FINAL_small.pdf

[†] The Performance Index score is calculated by multiplying the percentage of students that are untested, below basic/limited, basic, proficient, accelerated, or advanced by weights ranging from 0 for untested to 1.2 for advanced students. The totals are then summed up to obtain the school or district's PI score. PI scores range from 0 to 120, and the state has set the goal for all schools to achieve a PI score of 100 or better. For a complete description of how the Ohio Department of Education calculates the PI score see their website here:

<http://www.ode.state.oh.us/GD/DocumentManagement/DocumentDownload.aspx?DocumentID=29878>.

Table I: Akron Public Schools (District and Charter) Ranked by Performance Index Score

Rank	Building Name	Type	PI Score 10-11	PI Score 09-10	Designation 10-11	Overall AYP 10-11	# of standards met 10-11	# of standards possible 10-11	Value-added Composite 10-11	Enrollment	Grade Span
1	Akron Early College High School	District	110.4	109.5	Excellent	Met	11	11	--	330	9-12
2	Miller-South Visual Performing Arts	District	103.8	103.9	Excellent	Met	13	13	Met	489	4-8
3	King Elementary School	District	102.3	96	Excellent	Met	8	8	Met	399	K-5
4	National Inventors Hall of Fame School, Center for STEM	District	101	100.3	Excellent	Met	8	8	Met	289	5-8
5	Windemere Elementary School	District	98.4	97.2	Excellent	Met	7	8	Above	336	K-5
6	Firestone High School	District	98	100.7	Effective	Not Met	10	12	--	1237	9-12
7	Ellet High School	District	97.1	97.3	Effective	Met	10	12	--	1055	9-12
8	Judith A Resnik Community Learning Center	District	96	92.2	Effective	Met	5	8	Met	438	K-5
9	Hyre Middle School	District	94.3	91.4	Effective	Met	7	8	Met	783	6-8
10	Hatton Elementary School	District	94	95.3	Effective	Not Met	7	8	Met	510	K-5
11	Ritzman Community Learning Center	District	90.8	90.3	Excellent	Met	3	8	Above	342	K-5
*12	Firestone Park Elementary School	District	90.2	92.3	Effective	Met	5	8	Below	349	K-5
*12	Leggett Community Learning Center	District	90.2	91.1	Effective	Not Met	5	8	Below	321	K-5
14	Betty Jane Community Learning Center	District	90.1	90.5	Effective	Not Met	5	8	Below	433	K-5
15	Akros Middle School	Charter	87.3	0	Effective	Met	2	5	Above	86	6-8
16	Kenmore High School	District	87.2	82.7	Continuous Improvement	Not Met	2	12	--	822	9-12
17	Litchfield Middle School	District	87	86.3	Continuous Improvement	Not Met	4	8	Met	572	6-8
18	Forest Hill Community Learning Center	District	86.7	85.7	Continuous Improvement	Not Met	2	8	Met	298	K-5
*19	Harris Elementary School	District	85.6	75.8	Continuous Improvement	Met	2	8	Met	359	K-5
*19	Voris Community Learning Center	District	85.6	80.7	Continuous Improvement	Met	3	8	Met	333	K-5
21	Hope Academy Brown St Campus	Charter	85	86.6	Continuous Improvement	Met	6	15	Met	262	K-8
22	Buchtel High School	District	83.5	73.1	Continuous Improvement	Met	3	12	--	687	9-12
23	Lawndale Elementary School	District	83.3	83.2	Continuous Improvement	Met	3	8	Below	203	K-5
24	Bettes Elementary School	District	83.2	80.2	Continuous Improvement	Met	3	8	Below	211	K-5
*25	Kent Middle School	District	83.1	81.5	Continuous Improvement	Not Met	2	8	Met	627	6-8
*25	Life Skills Center Of Summit County	Charter	83.1	80.3	Continuous Improvement	Not Met	2	12	--	182	9-12
27	Edge Academy, The	Charter	82.5	79.4	Continuous Improvement	Met	5	8	Met	262	K-6
28	Glover Community Learning Center	District	82.3	80	Continuous Improvement	Not Met	1	8	Met	402	K-5
29	Sam Salem Community Learning Center	District	82.1	80	Continuous Improvement	Met	4	8	Met	272	K-5
30	Garfield High School	District	82	84.8	Continuous Improvement	Not Met	3	12	--	979	9-12

31	Portage Path Community Learning Center	District	81.4	74.8	Continuous Improvement	Met	2	8	Met	297	K-5
*32	Akron Alternative Academy	District	81.1	80.5	Continuous Improvement	Not Met	5	12	--	341	9-12
*32	Mason Community Learning Center	District	81.1	80.8	Continuous Improvement	Not Met	2	10	Met	306	K-6
*34	North High School	District	80.8	81.7	Continuous Improvement	Not Met	1	12	--	681	9-12
*34	Schumacher Academy Elementary School	District	80.8	81	Continuous Improvement	Not Met	1	8	Met	194	K-5
*34	Smith Elementary School	District	80.8	84.6	Continuous Improvement	Not Met	3	8	Below	163	K-5
37	Essex Elementary School	District	80.3	83.3	Continuous Improvement	Not Met	2	8	Met	215	K-5
38	Case Elementary School	District	80.2	80	Continuous Improvement	Not Met	1	8	Below	384	K-5
39	Barber Community Learning Center	District	79.9	82.9	Academic Watch	Not Met	2	10	Below	288	K-6
40	Seiberling Elementary School	District	78.3	73.9	Academic Watch	Not Met	1	10	Met	495	K-6
*41	Innes Community Learning Center	District	78.2	78.3	Academic Watch	Not Met	1	8	Met	672	6-8
*41	Pfeiffer Elementary School	District	78.2	80.2	Academic Watch	Not Met	2	8	Below	226	K-5
43	East Community Learning Center	District	76.9	80.3	Continuous Improvement	Not Met	2	17	Above	1088	7-12
44	Rimer Community Learning Center	District	76.1	83.5	Academic Watch	Not Met	1	8	Met	261	K-5
*45	Jennings Community Learning Center	District	76	73.1	Continuous Improvement	Not Met	1	8	Above	605	6-8
*45	Summit Academy Community School for Alt Learners of Akron	Charter	76	63.9	Continuous Improvement	Met	1	8	Met	86	K-10
47	Rankin Elementary School	District	73.9	71.2	Academic Watch	Not Met	1	8	Met	199	K-5
48	Helen Arnold Community Learning Center	District	73.7	70.5	Academic Watch	Not Met	1	8	Met	297	K-5
49	Hill Community Learning Center	District	73	73.5	Academic Watch	Not Met	1	10	Met	318	K-6
*50	Bridges Learning Center	District	72.6	51.3	Continuous Improvement	Met	0	9	Above	118	K-8
*50	Perkins Middle School	District	72.6	75.4	Academic Watch	Not Met	1	8	Met	392	6-8
52	Hope Academy University	Charter	72.4	70.7	Academic Watch	Not Met	2	15	Below	369	K-8
*53	Barrett Elementary School	District	70.8	74.6	Academic Watch	Not Met	0	8	Met	292	K-5
*53	Life Skills Center Of Akron	Charter	70.8	74.1	Academic Watch	Not Met	1	7	--	235	9-12
55	McBright Elementary School	District	70.7	65.8	Continuous Improvement	Met	1	8	Met	287	K-5
*56	Findley Community Learning Center	District	70.3	73.8	Continuous Improvement	Not Met	1	8	Above	416	K-5
*56	Summit Academy Secondary - Akron	Charter	70.3	88.5	Continuous Improvement	Met	4	12	--	59	8-12
58	Robinson Community Learning Center	District	69.3	62.8	Continuous Improvement	Met	1	10	Below	361	K-6
59	Life Skills Center of North Akron	Charter	68.9	71.4	Academic Emergency	Not Met	0	10	--	151	9-12
60	Summit Academy Middle School-Akron	Charter	66.7	75.2	Academic Emergency	Not Met	0	8	Met	97	5-10
61	Crouse Community Learning Center	District	66.3	71.6	Academic Emergency	Not Met	1	8	Met	330	K-5
62	Romig Road Community School	Charter	65.1	57.3	Academic Emergency	Not Met	1	8	Met	503	K-8
63	Lighthouse Comm & Prof Dev	Charter	64.5	65.9	Academic Emergency	Not Met	0	8	Met	86	K-6
64	Pathway to Success Akron	Charter	61.7	0	Not Rated	Not Met	0	1	--	38	K
65	Akron Opportunity Center	District	59.4	55.7	Academic Emergency	Not Met	0	6	Met	125	6-8

Source: Ohio Department of Education

Notes: 1) Rankings are based on Performance Index score for the 2010-11 school year. 2) Schools without a Performance Index score were removed.

* These schools were tied for the same ranking number.