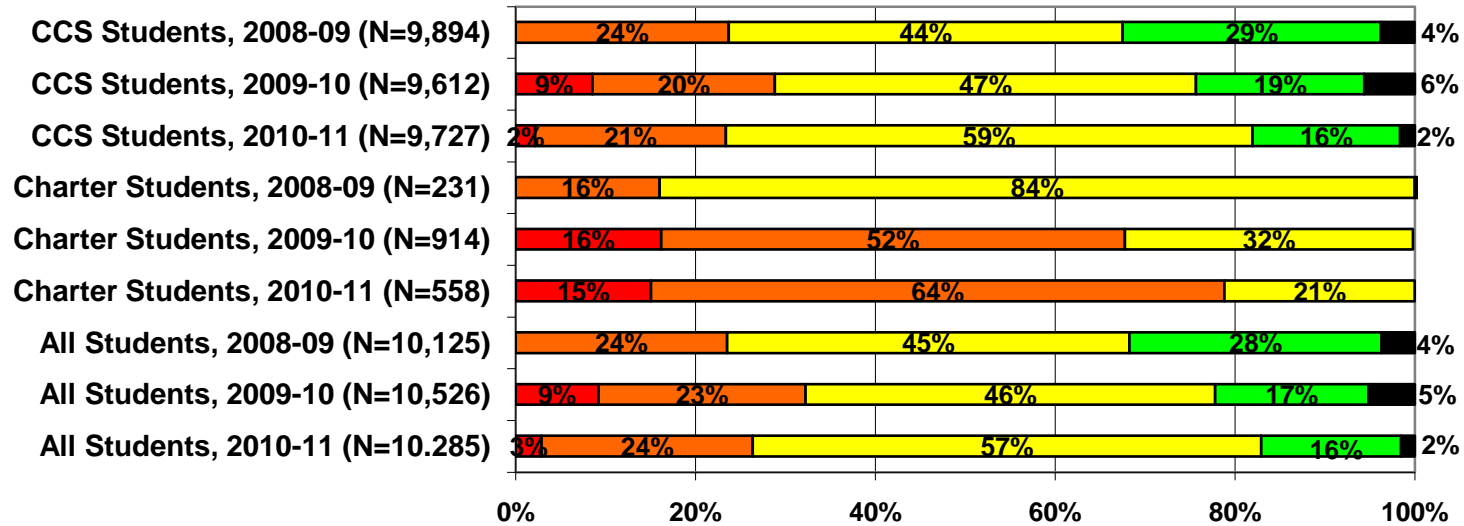




Detailed Analysis of School Performance in Canton (2010-11)

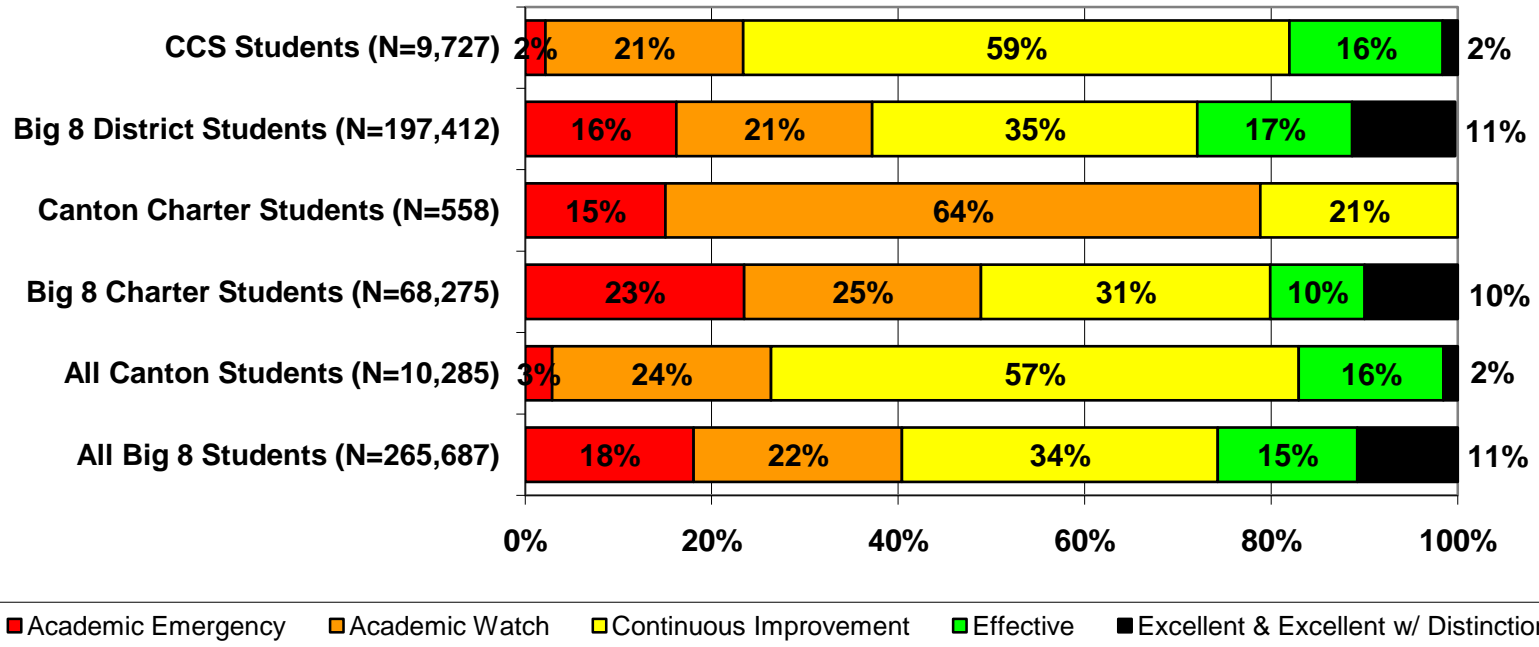
Graph I: Percent of Canton Students in Public Schools by State Designation (2008-09, 2009-10, and 2010-11)



■ Academic Emergency
 ■ Academic Watch
 ■ Continuous Improvement
 ■ Effective
 ■ Excellent & Excellent w/ Distinction

Source: Ohio Department of Education interactive Local Report Card
 Note: This chart does not include students in schools that are unrated and students attending charter e-schools.

Graph II: Percent of Canton Students in Public Schools by State Designation versus the Big 8 Average (2010-11)*

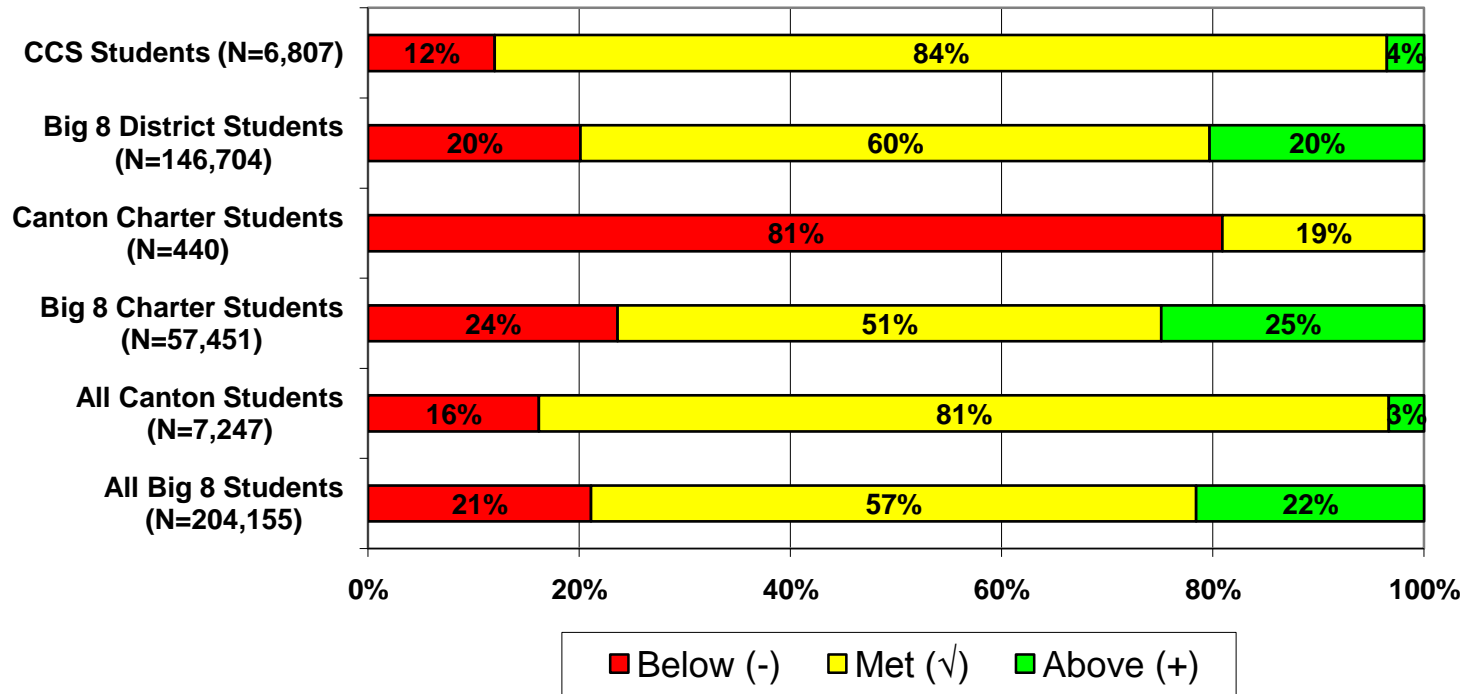


Source: Ohio Department of Education interactive Local Report Card

Note: This chart does not include students in schools that are unrated and students attending charter e-schools. Totals may not equal 100 due to rounding.

* The Big 8 districts are defined as Ohio’s largest urban districts: Akron, Canton, Cincinnati, Cleveland, Columbus, Dayton, Toledo, and Youngstown.

Graph III: Percent of Canton Students in Public Schools by Value-added Composite Score versus the Big 8 Average (2010-11)



Source: Ohio Department of Education interactive Local Report Card

Note: This chart does not include students in schools that did not receive a value-added composite score or students attending charter e-schools.

Table I: Canton Public Schools (District and Charter) Ranked by Performance Index Score

The following pages list Canton's public charter and district schools ranked by Performance Index (PI) score[†] for the 2010-11 school year. Numerous other performance indicators are also included, but the Performance Index score was selected for ranking the schools because it provides an overall indication of how well students perform on all tested subjects in grades 3 through 8 and the Ohio Graduation Test.

We strongly encourage readers to look closely at the number of standards met and the number of standards possible. A school with a large number of possible standards and possible standards met has gotten a large percentage of students to the state proficiency goals.

We also encourage readers to consider schools' value-added results. Where the Performance Index reflects student achievement at one point in time, value-added tells us how a school is doing at helping its students make progress from year to year. For more on value-added, see Fordham's value-added primer on our website:

http://www.edexcellencemedia.net/publications/2008/200808_ohiovalueaddedprimer/Ohio_Value_Added_Primer_FINAL_small.pdf

[†] The Performance Index score is calculated by multiplying the percentage of students that are untested, below basic/limited, basic, proficient, accelerated, or advanced by weights ranging from 0 for untested to 1.2 for advanced students. The totals are then summed up to obtain the school or district's PI score. PI scores range from 0 to 120, and the state has set the goal for all schools to achieve a PI score of 100 or better. For a complete description of how the Ohio Department of Education calculates the PI score see their website here:

<http://www.ode.state.oh.us/GD/DocumentManagement/DocumentDownload.aspx?DocumentID=29878>.

Table I: Canton Public Schools (District and Charter) Ranked by Performance Index Score (2010-11)

Rank	Building Name	Type	PI Score 10-11	PI Score 09-10	Designation 10-11	Overall AYP 10-11	# of standards met 10-11	# of standards possible 10-11	Value-added Composite 10-11	Enrollment	Grade Span
1	Portage Collab Montessori Middle School	District	100.9	102	Excellent	Met	7	10	Met	158	K-8
2	Worley Elementary School	District	97.4	95.4	Effective	Met	8	10	Met	357	K-6
3	Mason Elementary School	District	96	99.4	Effective	Met	7	10	Met	277	K-6
*4	Canton Arts Academy @ Summit	District	94.8	94.7	Effective	Met	10	15	Met	200	K-8
*4	Harter Elementary School	District	94.8	92.1	Effective	Met	7	10	Met	522	K-6
6	McKinley High School	District	88.5	88.7	Continuous Improvement	Not Met	6	12	--	1582	9-12
7	McGregor Elementary School	District	87.3	90.5	Continuous Improvement	Met	3	10	Met	373	K-6
8	Timken High School	District	86.1	82.2	Continuous Improvement	Not Met	3	12	--	989	9-12
9	Summit Academy Secondary - Canton	Charter	86	82.2	Continuous Improvement	Met	5	7	--	55	8-12
10	Cedar Elementary School	District	85.2	85.2	Continuous Improvement	Not Met	4	10	Met	451	K-6
11	Lehman Middle School	District	84.6	82	Continuous Improvement	Not Met	1	6	Met	651	7-8
12	Clarendon Elementary School	District	83.4	83.4	Continuous Improvement	Not Met	2	10	Below	429	K-6
13	Crenshaw Middle School	District	82.7	83.2	Continuous Improvement	Not Met	2	6	Met	423	7-8
14	Canton City Digital Academy	District	81.6	74.1	Continuous Improvement	Not Met	5	12	--	137	4-12
15	Hartford Middle School	District	80.4	69.4	Effective	Not Met	1	6	Above	241	7-8
16	Allen Elementary School	District	80.1	78.8	Continuous Improvement	Not Met	3	10	Met	364	K-6
17	Belle Stone Elementary School	District	78.2	76.9	Academic Watch	Not Met	1	10	Met	327	K-6
18	Barbara F Schreiber Elementary School	District	76.8	80.3	Academic Watch	Not Met	1	10	Met	472	K-6
19	Belden Elementary School	District	76.3	69.3	Continuous Improvement	Met	1	10	Met	300	K-6
20	Fairmount Elementary School	District	75.9	78.1	Academic Watch	Not Met	2	10	Met	267	K-6
21	Dueber Elementary School	District	75.3	79.5	Academic Watch	Not Met	2	10	Met	285	K-6
22	Youtz Elementary School	District	74.1	78.2	Academic Watch	Not Met	1	10	Below	387	K-6
23	Brighten Heights Charter School of Canton	Charter	71.8	75	Academic Watch	Not Met	2	26	Below	356	K-12
24	Gibbs Elementary School	District	71.2	70.9	Academic Watch	Not Met	1	10	Met	323	K-6
25	Project Rebuild Community School	Charter	65.4	58.6	Continuous Improvement	Met	0	7	--	63	9-12
26	Pathway to Success Canton	Charter	62	0	Not Rated	Met	1	1	--	41	K-6
27	Summit Academy-Canton	Charter	54	57.8	Academic Emergency	Not Met	1	11	Met	84	K-10

Source: Ohio Department of Education

Notes: 1) Rankings are based on Performance Index score for the 2010-11 school year. 2) Schools without a Performance Index score were removed.

* These schools were tied for the same ranking number.

